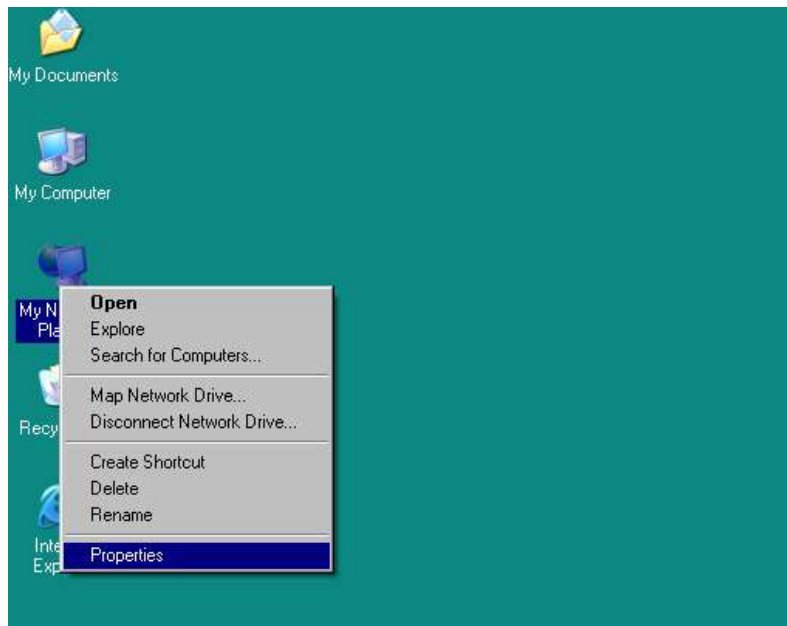


# Windows P.C. – Network Card Setup for Windows XP

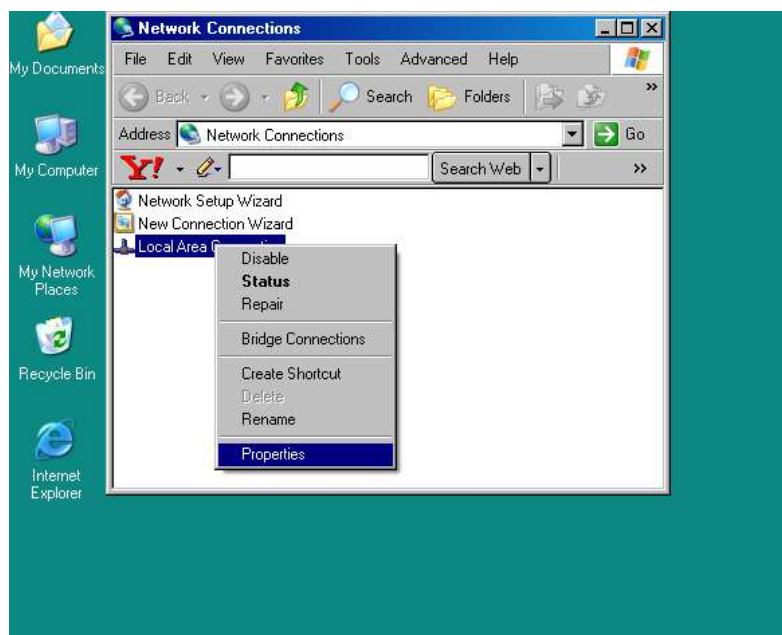
Before following this document be sure you have the following information

1. An I.P. address that is not currently in use on your network
2. Your Gateway I.P. address (Internet Router I.P.)
3. DNS I.P. addresses from you internet provider.

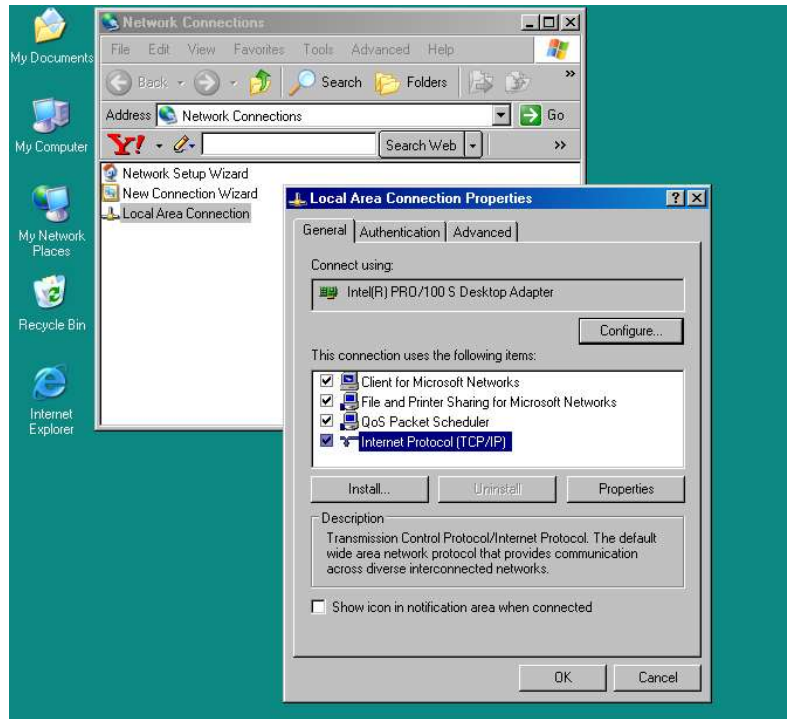
1. Right Click on **My Network Places** and Left Click on **Properties**



2. Next Right Click on **Local Area Connection** and Left Click on **Properties**



3. Click on **Internet Protocol (TCP/IP)** then click on **Properties**



4. Select **Use the following IP address** and enter the information available to your network. Once the information is added click ok. Then click ok on each remaining screen. You probably see a 10 to 15 second pause in your P.C. Performance as the new settings are being implemented.

