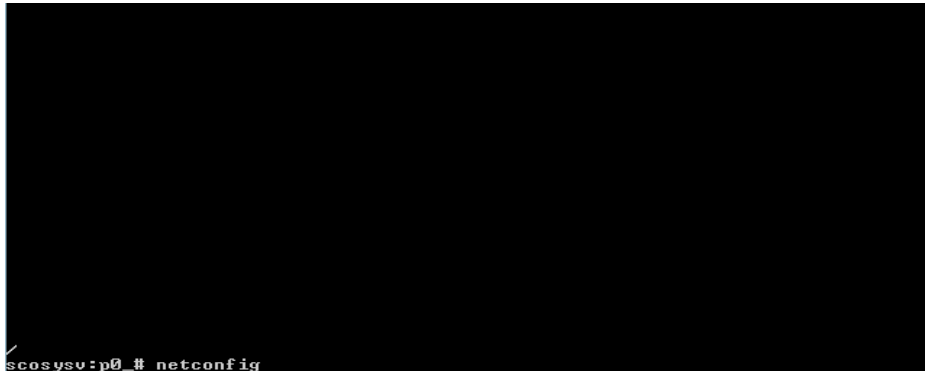
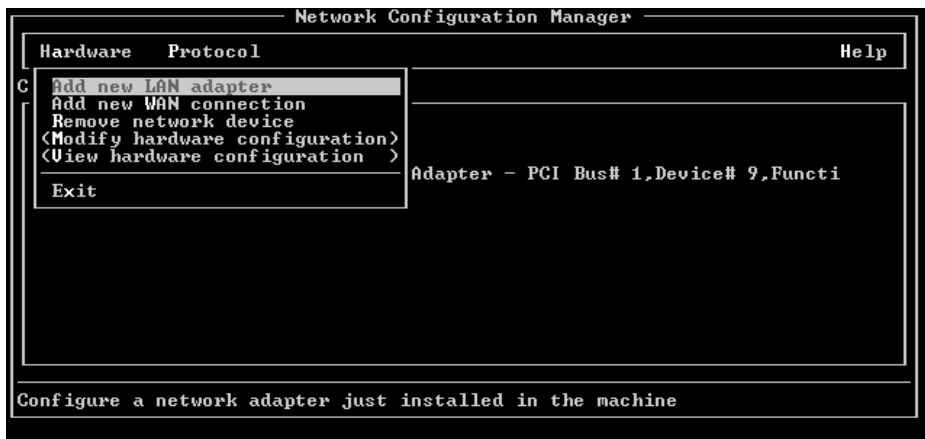


# Setting up a network card on a SCO Machine

1. Type netconfig at the pound sign and press enter. This will bring up a screen that lists your network cards.

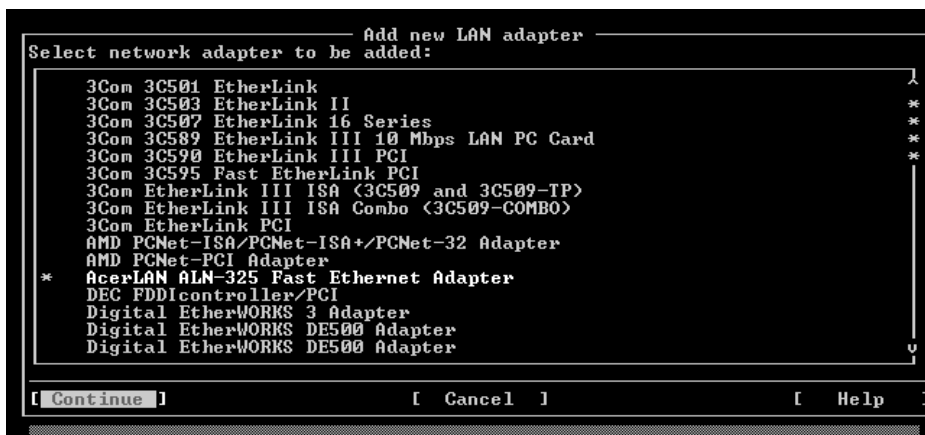


2. Press the enter key on hardware. This will bring up a menu. Choose add new lan adapter and press enter.



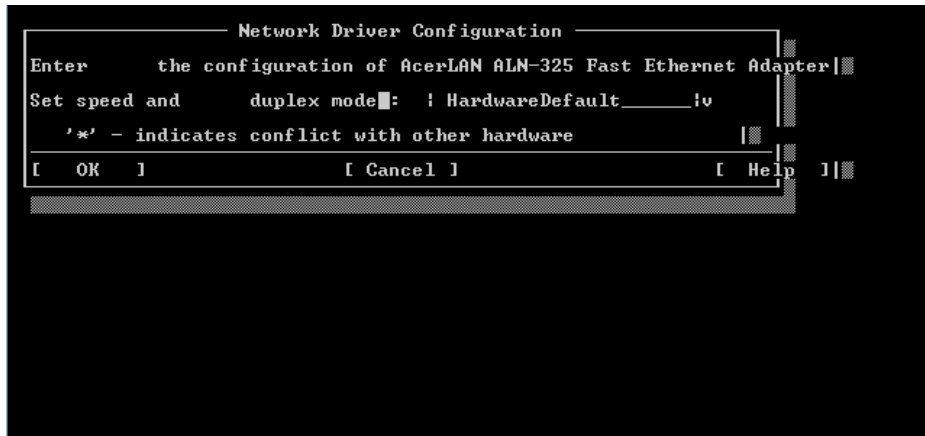
3. Arrow down to the entry for the network card you are going to install and press enter. Then press the tab key to highlight continue and press enter. If you do not see the network card you are adding in the list it may be necessary to exit the netconfig program and install it from a floppy or cdrom. Please see the section on adding a driver.

Note: the Realtec 8139B network adapter uses the AcerLAN ALN-325 Fast ethernet adapter.

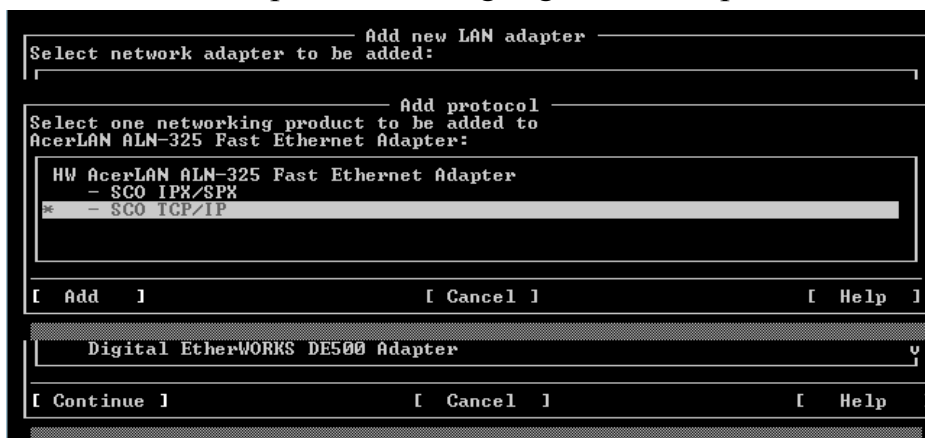


# Setting up a network card on a SCO Machine

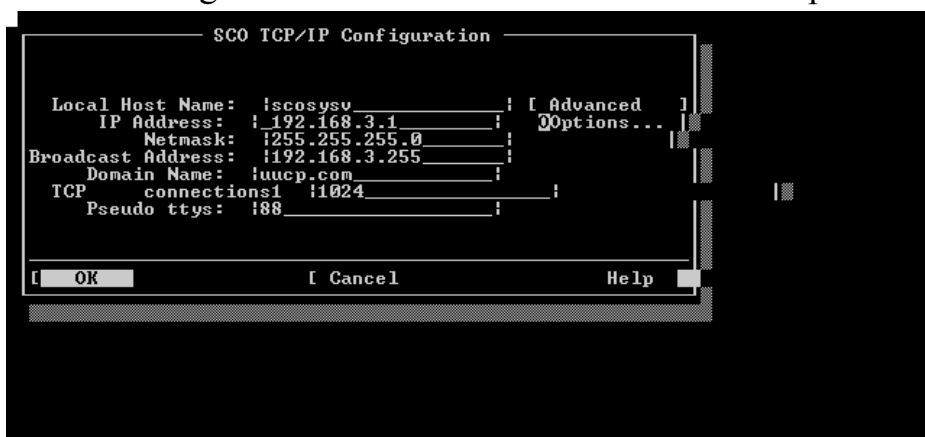
4. Leave Speed and duplex mode at hardware default. Tab to ok and press enter.



5. Arrow down to TCP/IP then press tab to highlight add and press enter.



6. The host name should be the name of the customer. Press enter. The ip address is the ip address you want this server to have on the network. It must be different from any other address on the network. The netmask should be 255.255.255.0 and the broadcast address should have the first three numbers the same as the ip address and the last number should be 255. Leave all other settings at their default values. Tab to ok and press enter.



# Setting up a network card on a SCO Machine

7. Press enter on ok when informed that your network card was added successfully. This will take you back to the screen that lists your network cards. The network card you just added should be listed. Press the down arrow on hardware until you get to exit.

```
Network Configuration Manager
-----
Hardware  Protocol  Help
-----
C Add new LAN adapter
  Add new WAN connection
  Remove network device
  Modify hardware configuration
  View hardware configuration
  Exit
-----
Adapter - PCI Bus# 1,Device# 9,Func# 0
*HW AcerLAN ALN-325 Fast Ethernet Adapter
  SCO TCP/IP
  - SCO NFS Runtime System

Exit this network configuration utility
```

8. When you are asked to relink the kernel press the enter key on yes.

```
Network Configuration Manager
-----
Hardware  Protocol  Help
-----
Current networking configuration:
HW SCO TCP/IP Loopback driver
S
-
HW Int S Question
      S ??? The Unix kernel must be re-linked before the changes made here will have an effect.
      S Do you want to re-link the kernel now?
HW Ace S [ Yes ]
* S [ No ]
S
-
-----
```

9. When asked if you want the new kernel to boot by default answer yes. When asked do you want the kernel environment rebuilt answer yes. Press enter to continue.

```
The UNIX Operating System will now be rebuilt.
This will take a few minutes. Please wait.

Root for this system build is /

The UNIX Kernel has been rebuilt.

Do you want this kernel to boot by default? <y/n> y
Backing up unix to unix.old
Installing new unix on the boot file system

The kernel environment includes device node files and /etc/inittab.
The new kernel may require changes to /etc/inittab or device nodes.

Do you want the kernel environment rebuilt? <y/n> y

The kernel has been successfully linked and installed.
To activate it, reboot your system.

Setting up new kernel environment
Press Enter to continue
```

# Setting up a network card on a SCO Machine

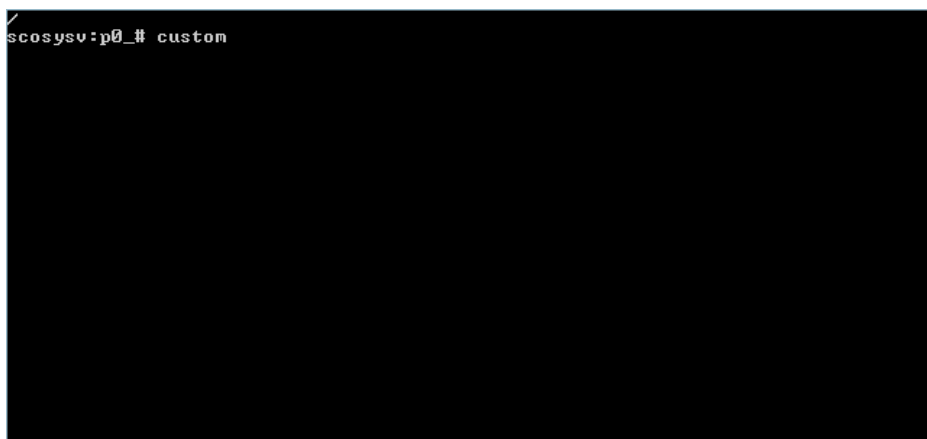
10. Reboot the system by typing `shutdown -g0 -y -i6`. When the system comes back online the new network card should be functional.



**If you have completed all the previous steps successfully do not continue with the rest of the document. The network card is now setup.**

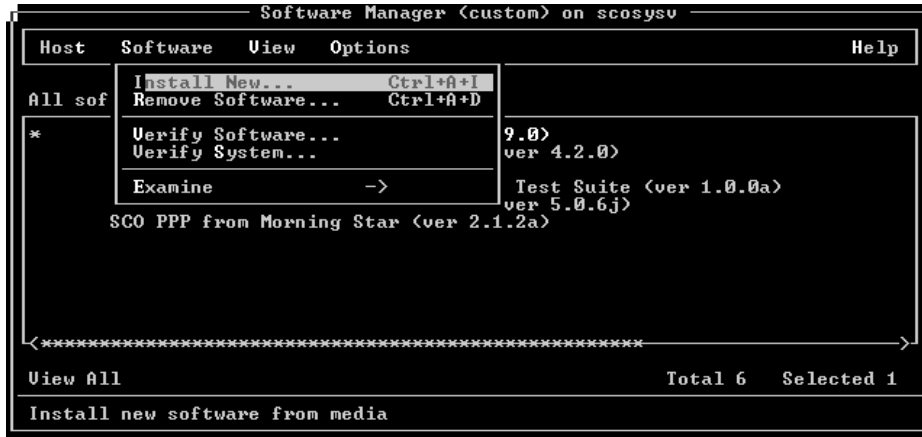
## Installing a driver for a network card

1. Insert the floppy or cd that contains the network card driver. From the pound sign type `custom` and press enter.

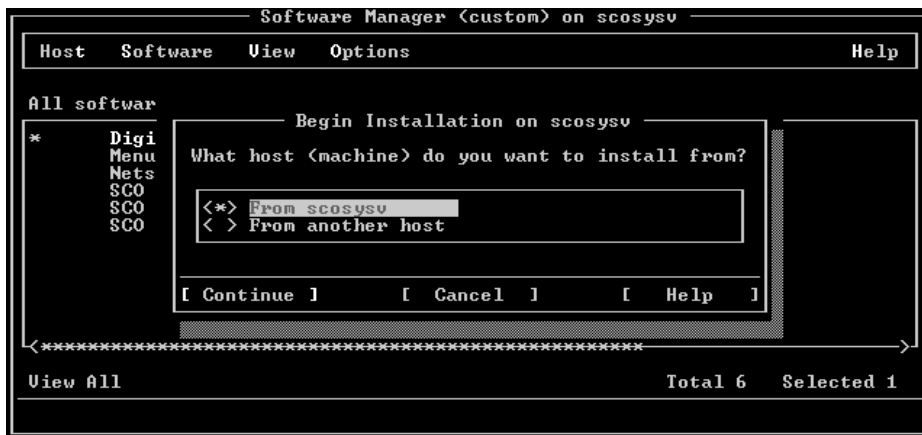


# Setting up a network card on a SCO Machine

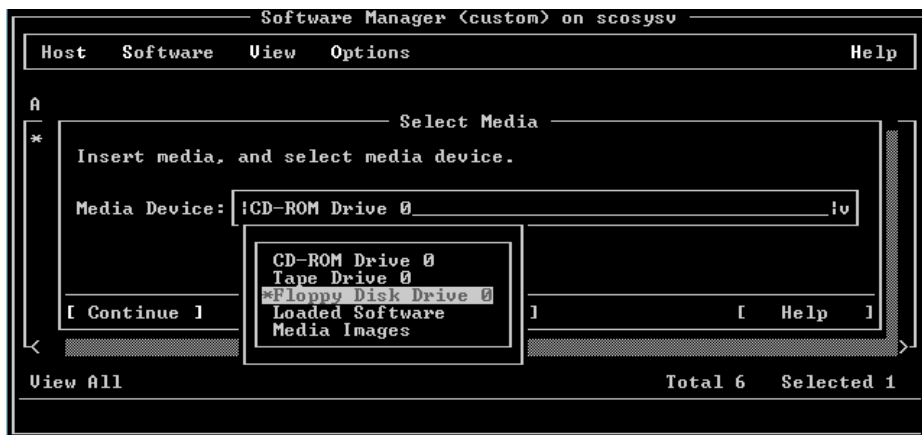
2. Arrow over to software and press enter. Press enter on install new...



3. Press enter on whatever your server name is.

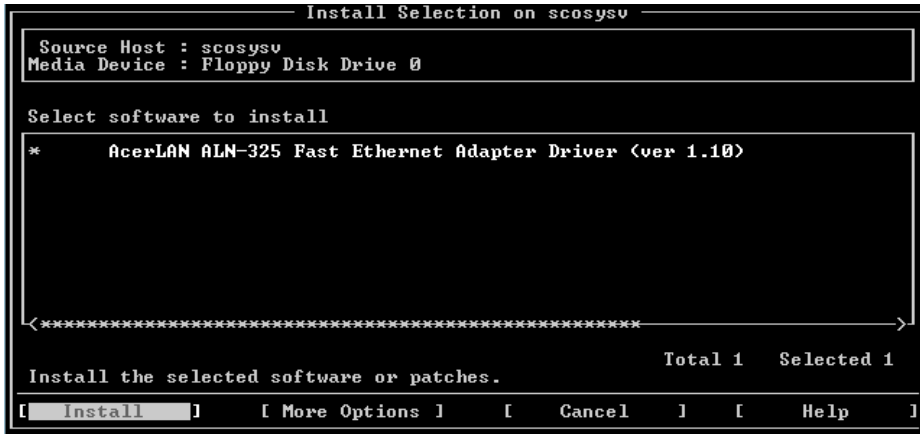


4. In the select media window under the media device field press the down arrow until you arrive at the device from which you want to get the driver. Press enter when the correct device is selected. .

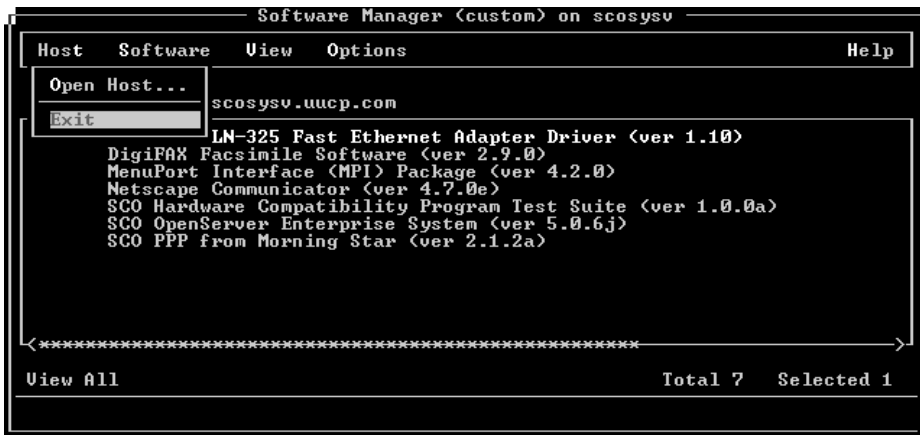


# Setting up a network card on a SCO Machine

5. Sco will begin examining the media. Arrow down to the driver for your network card and press the tab key until install is highlighted. Press enter.



6. Press enter on ok when the popup box informs you that the installation is complete. If you performed the installation correctly the driver for your network card should appear in the list below all software on whatever the server name is. Arrow over to hosts and press the down arrow until you get to exit. Press the enter to key on exit.



7. Return to the begging of the document.