

# SETTING UP DIGI XEM

## Things to Remember!

- A. **Never use the Change/Show Option to set up a new or additional concentrator! Period! Delete the current setup, reboot....then install the new setup!**
- B. **Before you start anything, make sure that you have a current set of Root and Boot Media, EOD, EOM, and other needed Media! DO NOT ASSUME!!**
- C. **Follow every sequence that you complete with a reboot of the system.**

## Older motherboards have two major types of slots for cards- ISA or PCI!

- a. PCI slots- white and approx. 3" long.
  - b. ISA slots- black or brown and approx 5 inches long.
- Typical cards that you would see plugged into those slots are Video Cards, Sound Cards, Digi Cards, etc. So when asked which card you need or are installing, the right answer will either be PCI and or ISA!

From the prompt type # **swinstall** Then hit **enter**

You should now see something that resembles the following ....

Package	Version	Item Package	Version
1) AopenNic	400	17)mpi420	420
2) abcsinst	10	18)mruser	1.0
3) configs	1	19)nic100f	400
4) dialupinst	1	20)norand	1
5) digifax	290a	21)openssl	0.9.6
6) digifax	290a_auto	22)perl-site-lib	5.6.0
7) digifax	290ajet	23)plt	2
8) doublevision	2000	24)powerchute	101
9) facetterm	341	25) ramdisk	1
10) facetwin	1	26) rasmodem	4
11) fenix	31	27) servistar	10a
12) hcptest	100a2	28) tarantella	1
13) lptutils	1.0	29) tcs-server	2.5
14) mlink	61905	30) ttyfix	1.0
15) mmgr	40001	31) tuneup	1tune
16) mmgr5	50001		

Package to install (d)esc/1-31/package [version]/0: none):

Now select the most recent MPI approved version (as of 2/24/2001 all systems get the 4.2.0 Version.) When MPI is complete, you should be at the prompt.

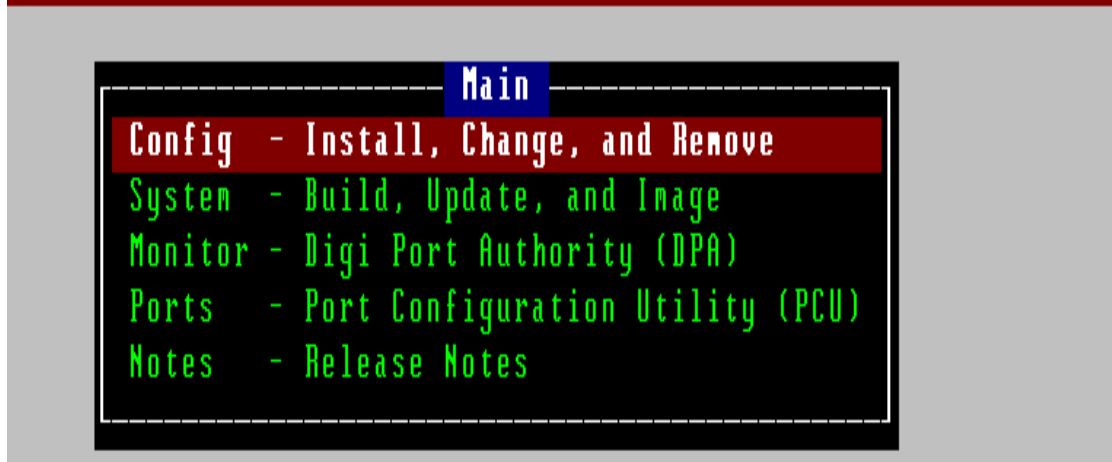
Now from the prompt type # **digicfg** Then hit **enter** to start

**Space bar** to bypass the Restricted Rights Screen.

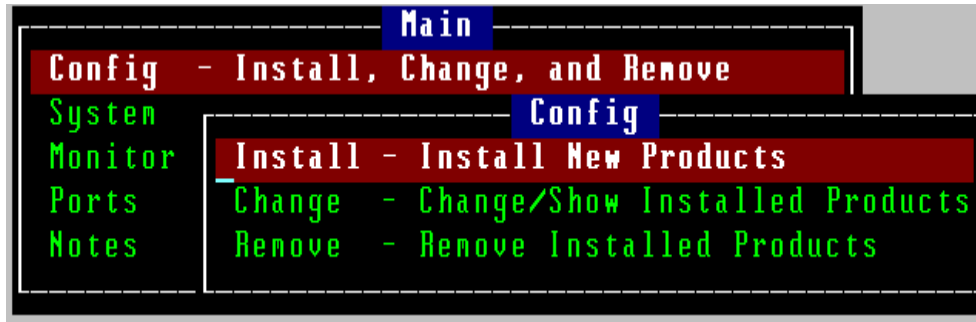


You should be on a screen that reads "MenuPort Interface Version xxx"

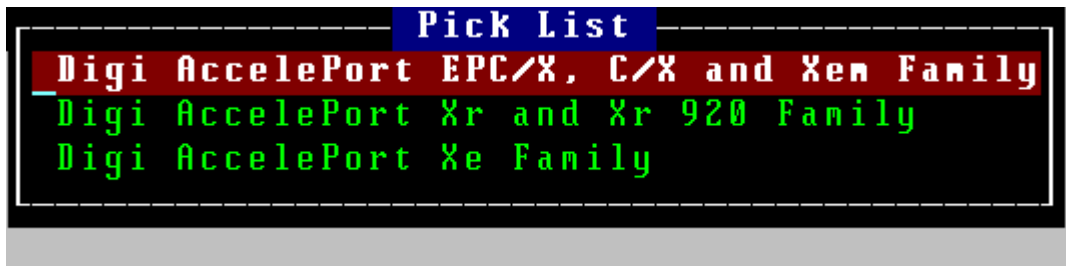
In the first Menu Box select "Config-Install, change, and remove"



On the second Menu Box select “Config” “Install- Install New Products”

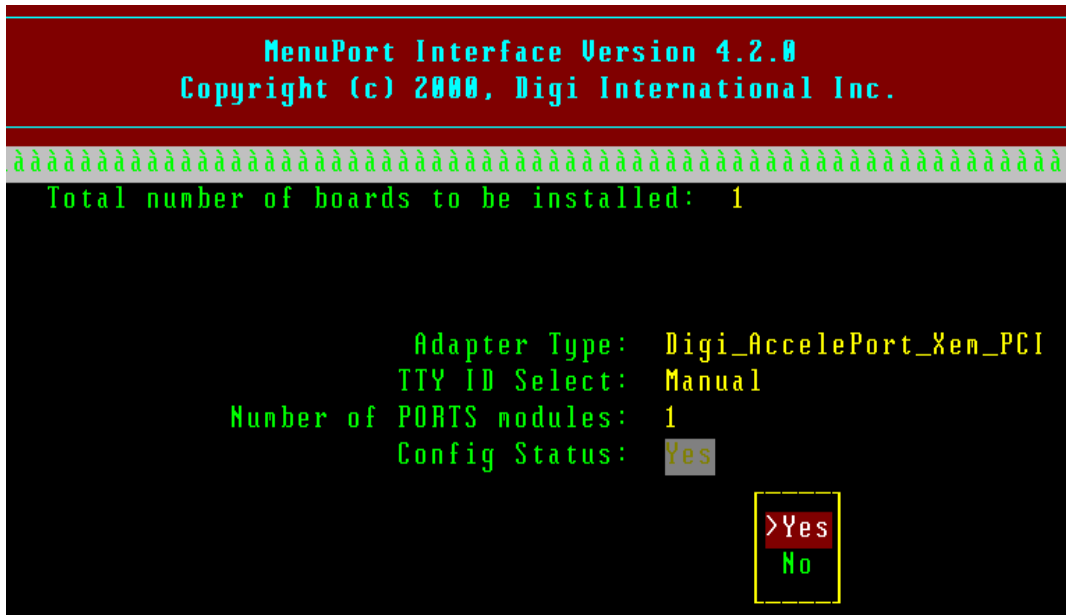


On the next Menu select ... “Digi Acceleport- EPC/X, CX and Xem Family”



**Note:** Make sure that you select EPC/X, CX, and Xem Family, regardless of which card you are using *ISA or PCI cards!*

Now you should be on a screen that reads “MenuPort Interface Version “



If you're installing a single Xem PCI Card, your screen should look like the

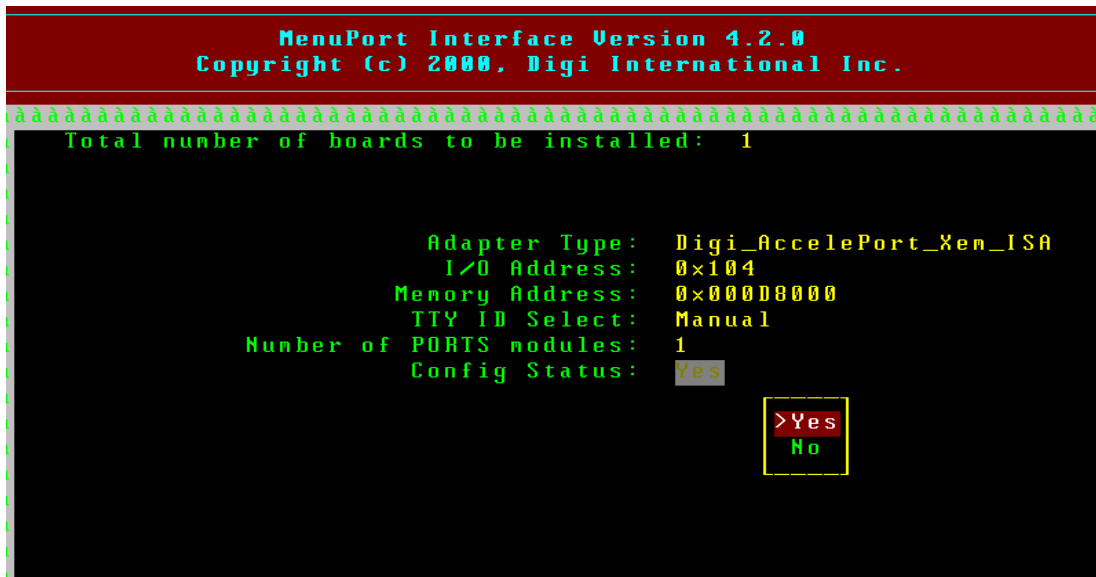
Picture above

You should be prompted for the “**Total Number Boards to be installed**”

Enter your choice now- 1 (Typically)

**NOTE:** In the line above, the “1” represents 1 Card! This card can be setup for 8 or 16 port concentrators, and it does support multiple concentrators! However, seven Host cards are the most Cards that you can install on one system using Digiboard!

Remember that ISA Cards have dipswitches that will need to be properly addressed! Typically you should install the card in the lowest port available in your computer. Then set the dipswitches to the lowest address available - typically “0x104”. You do not have dipswitches on PCI cards. Those types of cards are auto detect. You may refer to the install.doc for these settings. See the bottom of the page for the procedure to access install.doc.



In the example above we are installing a single **Xem ISA Card**

When asked on the next line what type of Card we are installing, you would select (F-2 for choices) “**Digi\_Accelerport\_ISA\_Xem**”

\* You may also **spacebar** to change the type of card!

**If we were installing a PCI Card, auto detect is what sets the I/O and Memory addresses!**

Using our Xem ISA card example...

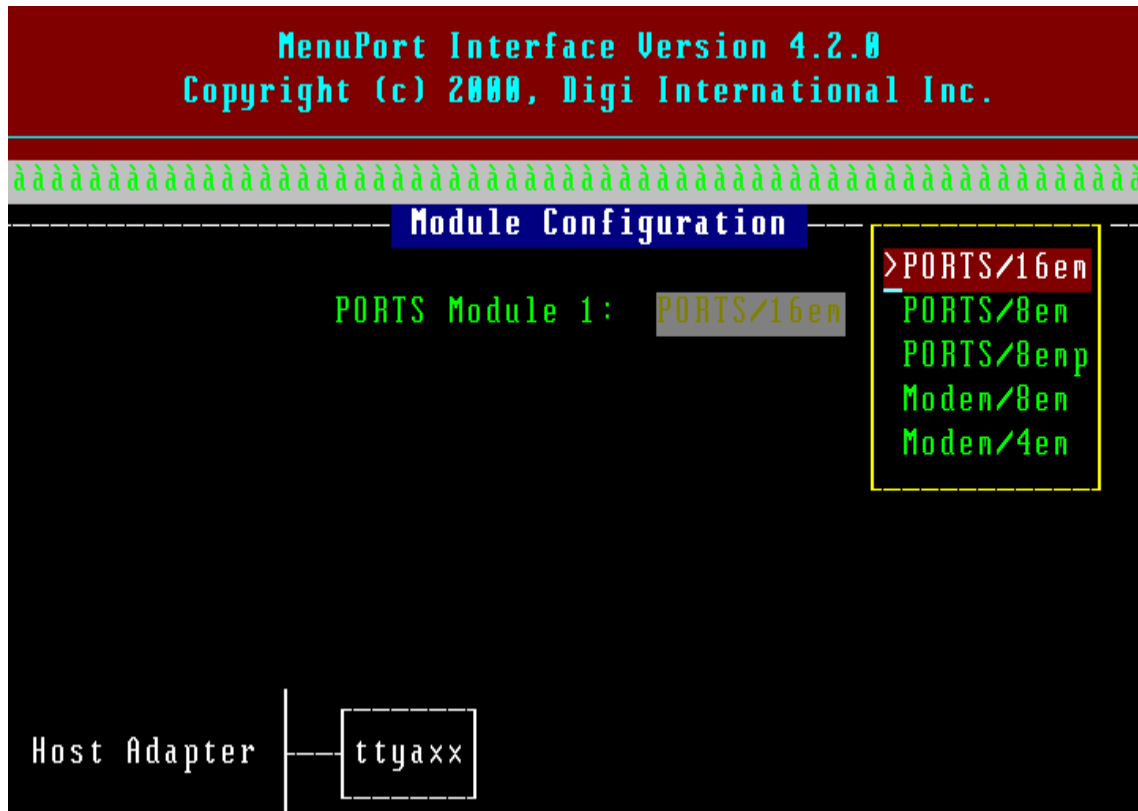
Your next line should read “**0x104**”, which represents the I/O Address Slot (This is typically the lowest slot on your motherboard.) If you are unsure of the ISA Digi Dip Switch Settings, at this point hit the **F4** key and it will show you a pictorial of your card and the correct dipswitch settings. If your I/O address is right, your Memory address should read “**0x000D8000**”.

Your "TTY ID Select" should read "Manual"  
Your "Number of Ports Modules" should read "1"

*Note: This line is where you would put the number of concentrators that you are wanting connected to this line. Just remember, Xem Concentrators require power when using 3 or more concentrators.*

Now your "Config Status" should read "Yes"

At the bottom of the screen you will be prompted to select "F-5" to continue



The next screen you see (above) should show you what you have just set up

If it is correct, as prompted, select the F5 Key to continue



Please remember that PCI cards are "Auto Detect", with no Switch settings.

**REMEMBER, ..BEFORE YOU MAKE ANY "CHANGES," MAKE SCREEN PRINTS OF ALL EXISTING DIGI CONFIGURATIONS,**

**When addressing a new concentrator, NEVER utilize the same address of a current concentrator.** By doing so, two major files will most likely become corrupt. Those files are the **inittab** and **ttytype**! When this happens, you will have no choice but to re-create those files "Manually"!

Assuming you already have ttya, ttyc, ttyd, and you want to add ttyb. Do so by *starting* from the beginning with all of your addresses, including "b" (a, b, c, & d). In addition to this, you will then need to re-create all of your POS and Purchasing forms setup for all of the new workstations assignment numbers. For some, this can be a lot of work!