

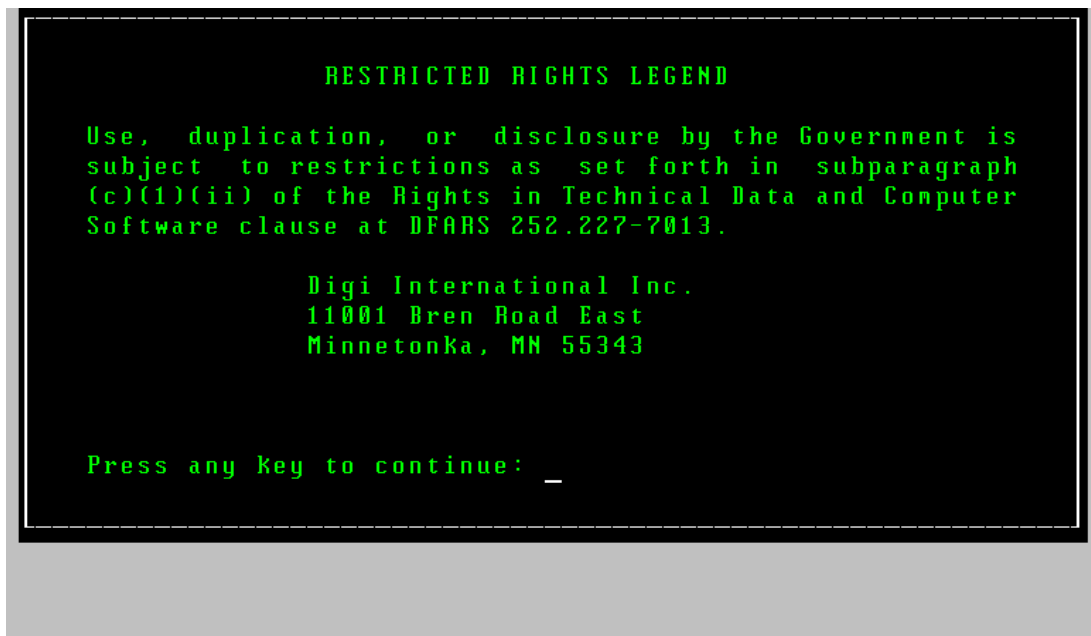
# Digi XEM- Adding Additional Concentrator

## Things to Remember!

1. Never use the Change/Show Option to set up a new or additional concentrator! ONLY install new!
2. Before you start changing anything, make sure that you have a current set of Root and Boot Media, EOD, EOM, and other needed Media! Do not assume – VALIDATE YOUR MEDIA!
3. Follow every sequence that you complete with a reboot of the system.

## Older motherboards have two major types of slots for cards- ISA or PCI!

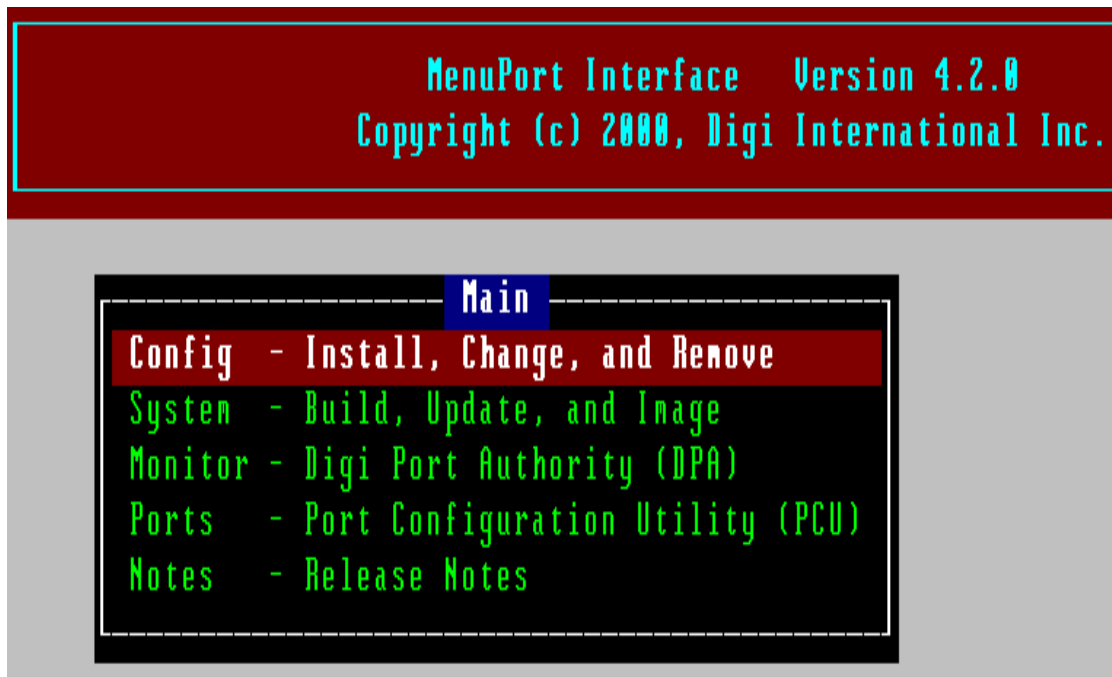
1. PCI slots- white and approx. 3" long.
2. ISA slots- black/or brown and approx 5 inches long.
3. Typical cards that you would see plugged into those slots are Video Cards, Sound Cards, Digi Cards, etc. So when asked which card you need or are installing, the right answer will either be PCI and or ISA!
4. From the prompt type # digicfg Then hit the enter key



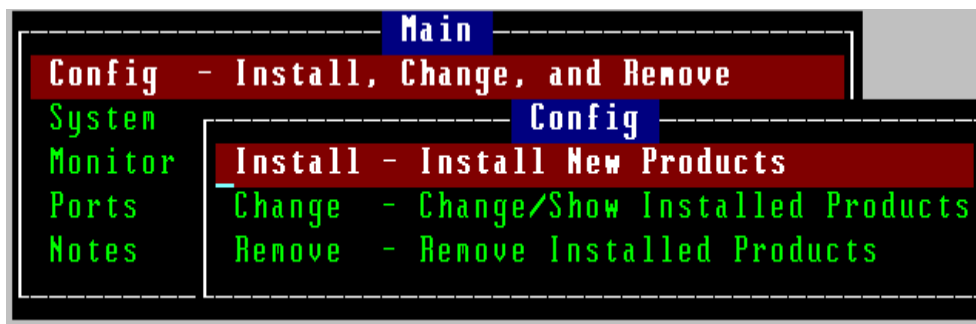
You should be on a screen that reads "MenuPort Interface Version xxx"

GRN 01/28/02

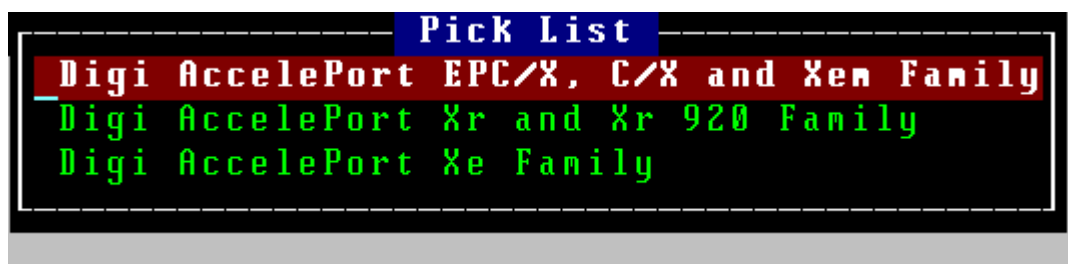
In the first Menu Box select "Config-Install, change, and remove"



On the second Menu Box select "Config" "Install- Install New Products"

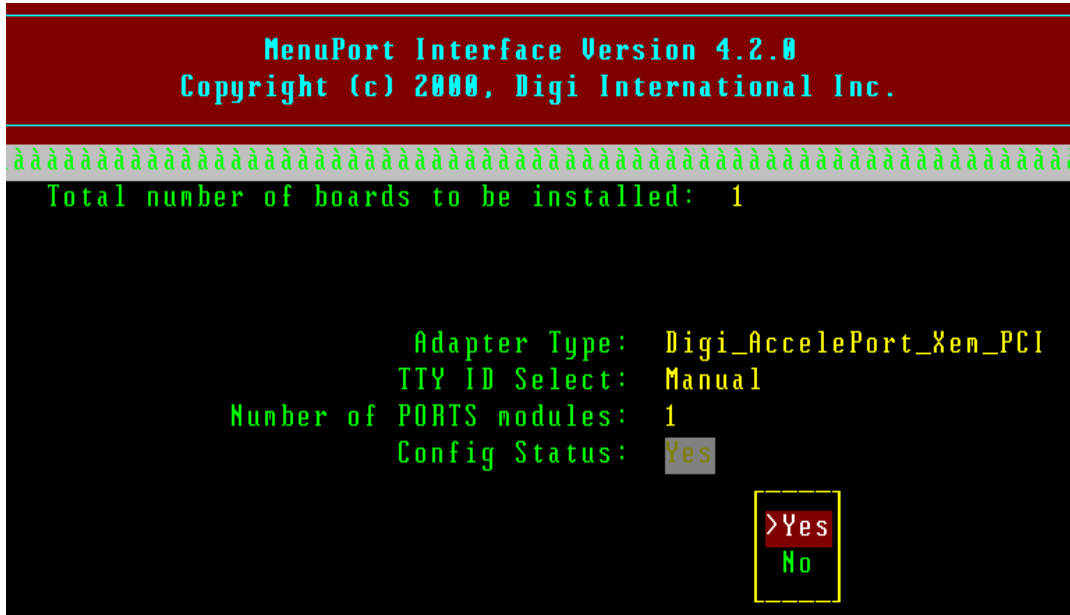


On the next Menu select ... "Digi Acceleport- EPC/X, CX and Xem Family"

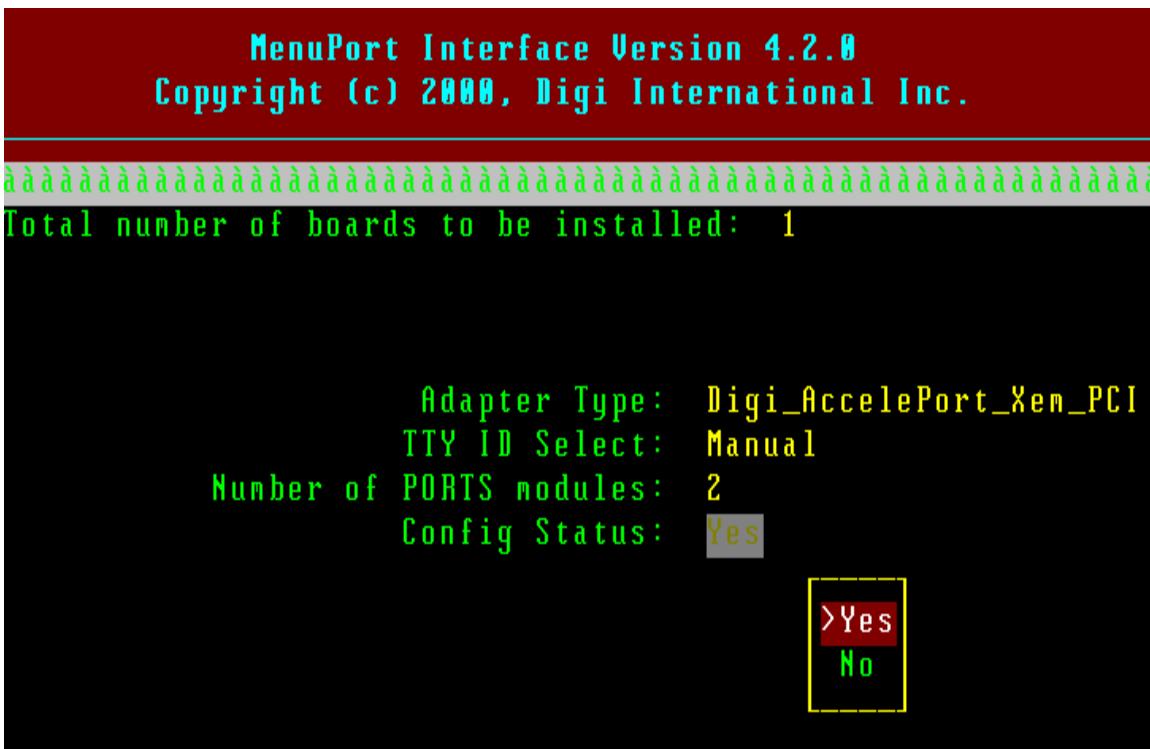


**NOTE:** Make sure that you select **EPC/X, CX, and Xem Family** regardless of whether you are using **ISA or PCI cards!**

Now, you should be on a screen that reads “**MenuPort Interface Version** “



Your original Xem PCI Card single concentrator setup looked like the above. The New “additional” concentrator has been added below.



Now look at the new change shown above- 1 port module to 2 port modules.

(All other settings on this page stay the same)

**NOTE:** Remember, seven Host cards is the most Cards that you can install on one system.

In the reference below, the ISA Card has been working and has dipswitches that are Properly addressed! *Remember to always install new cards in the lowest ISA port available.* Set the dip switches to the lowest address possible, typically "0x104". You do not have dipswitches on PCI cards. Those cards utilize auto detect. You may refer to the install.doc for these settings.



In our original example above, we installed a single **Xem ISA Card**

The adapter type can be changed by hitting the **space** bar on your Keyboard or hitting the **F-2** key. Our choice is "**Digi\_Accelerport\_Xem\_ISA**"

Note the change to "**2**" modules/concentrators on the Next Page!

MenuPort Interface Version 4.2.0  
Copyright (c) 2000, Digi International Inc.

```
aaaaaaaaaaaaaaaaaaaaaaaaaaaaaaaaaaaaaaaaaaaaaaaaaaaaaaaaaaaaaaaaaaaaaaaa  
Total number of boards to be installed: 1  
  
Adapter Type: Digi_AccelerPort_Xem_ISA  
I/O Address: 0x104  
Memory Address: 0x000D8000  
TTY ID Select: Manual  
Number of PORTS modules: 2  
Config Status: Yes
```

Above you will see the new setup change.. Port Modules from 1 to 2 port module

**Remember, PCI Xem /CX cards use Auto Detect to set the I/O and Memory address!!!**

If you are unsure of your Digi Cards Dip Switch Settings, you may confirm your I/O Address, (once you are on this page,) by hitting the **F4** key. This should show you what address the Card is now set to. In our case...example **0x104**. If your I/O address is right, your Memory address should read **“0x000D8000”**.

Currently your settings should read the following....

Your **“TTY ID Select”** should read **“Manual”**  
Your **“Number of Ports Modules”** should read **“1”**

**NOTE: Right here is where you will need to change the Ports Modules to read “2”!**

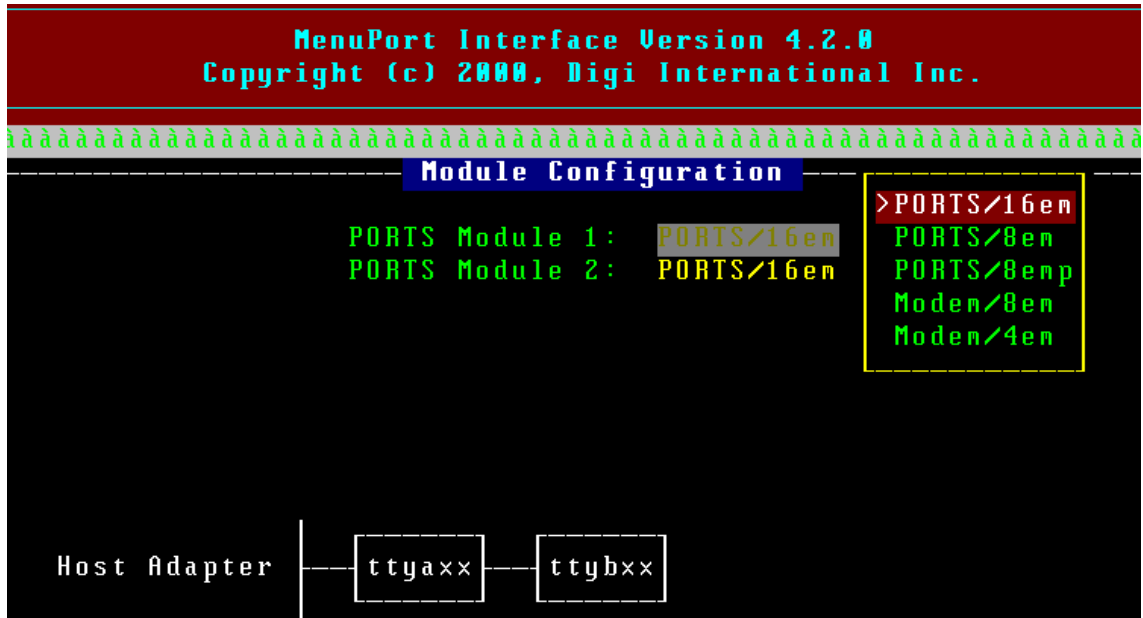
Now, your **“Config Status”** should read **“Yes”**

Now select the **“F-5”** key to continue

You should be at a screen that will show you the card type and the number of concentrators that you have set up.

```
MenuPort Interface Version 4.2.0  
Copyright (c) 2000, Digi International Inc.  
aaaaaaaaaaaaaaaaaaaaaaaaaaaaaaaaaaaaaaaaaaaaaaaaaaaaaaaaaaaaaaaaaaaaaaaa  
Module Configuration  
PORTS Module 1: PORTS/16en  
>PORTS/16en  
PORTS/8en  
PORTS/8enp  
Modem/8en  
Modem/4en  
Host Adapter | ttyaxx
```

If it is correct, select the **F5** Key to continue as instructed.



Your next screen should not change!!

Are you going to us **Digi screens** answer (YES)

The **number of Digi Screens** that you are using answer (32)

**MAKE SURE THAT THE "ALT PIN" SETTING IS SET TO "ON"**  
(If altpin is not set properly, you will not connect to the modem)



Select **F5** to continue

**“You will be asked several times while in MPI/Digicfg....  
“Do you want to relink the Kernal”?**

**Answer “NO” while you’re in digicfg! When you have escaped out of your last graphical screen, you will be prompted again to re-link the kernal. Do so now! Only answer yes when you are completely out of the digicfg screen.... Then the screen is black, and it will again ask you if you want to relink....then you say “YES”!**

**Now perform a controlled shutdown. Once your system is powered off, then perform the necessary steps to install the other concentrator. Reboot and all should be in order.**