

CX Concentrator Setup

Before you start performing any function....

1. Make sure you have a current R & B Media, EOD, EOM, etc.
2. If upgrading, make screen prints of all users and printers.
3. When addressing a new concentrator, NEVER utilize the same address of a current concentrator.

Motherboards have two major types of slots for plugging in different cards

- a. PCI slots- white and approx. 3" long.
- b. ISA slots- black or brown and approx. 5 inches long?

(Note: Typical cards that you would see plugged into these slots are Video Cards, Sound Cards, Digi Cards, etc.)

Lets begin, by typing from the prompt # **swinstall** Then hit the **enter** key
You should now see something that resembles the following

<u>Package</u>	<u>Version</u>	<u>Item Package</u>	<u>Version</u>
1) AopenNic	400	17) mpi420	420
2) abcsinst	10	18) mruser	1.0
3) configs	1	19) nic100f	400
4) dialupinst	1	20) norand	1
5) digifax	290a	21) openssl	0.9.6
6) digifax	290a_auto	22) perl-site-lib	5.6.0
7) digifax	290ajet	23) plt	2
8) doublevision	2000	24) powerchute	101
9) facetterm	341	25) ramdisk	1
10) facetwin	1	26) rasmodem	4
11) fenix	31	27) servistar	10a
12) hcptest	100a2	28) tarantella	1
13) lptutils	1.0	29) tcs-server	2.5
14) mlink	61905	30) ttyfix	1.0
15) mmgr	40001	31) tuneup	1tune
16) mmgr5	50001		

Package to install (d)esc/1-31/package [version]/0: none):

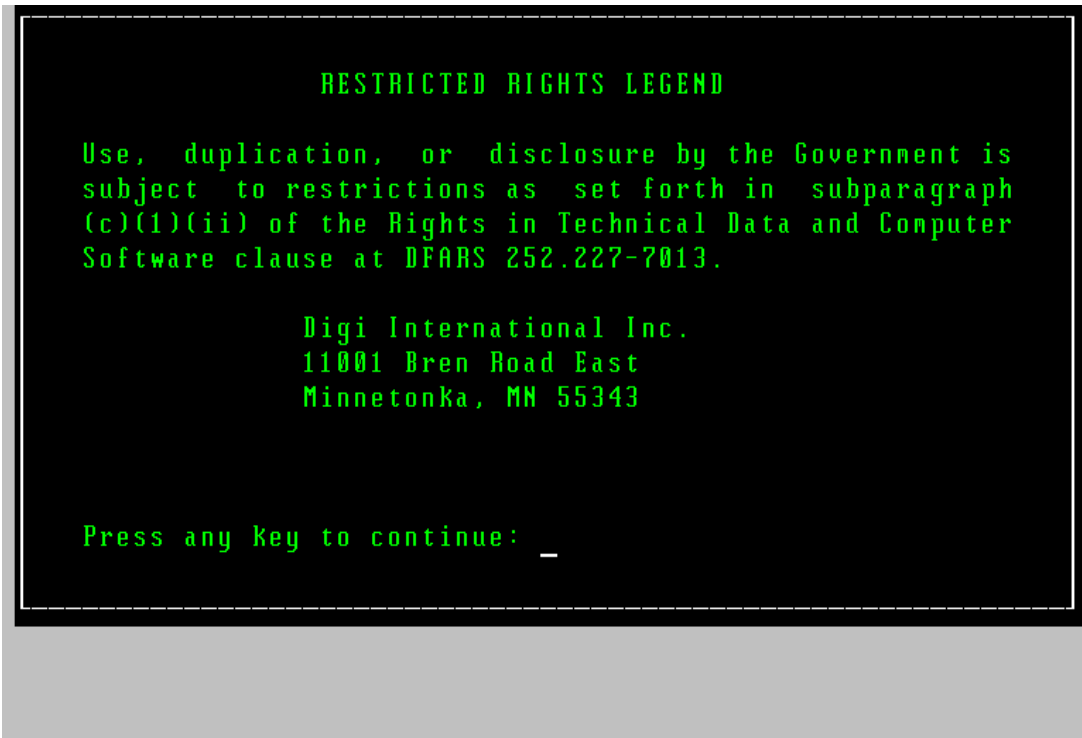
Now select the most recent MPI approved version (as of 2/24/2001 all systems get 4.2.0 Version) When MPI is complete, you should be at the prompt.

From the prompt type # **digicfg** Then hit the **enter** key

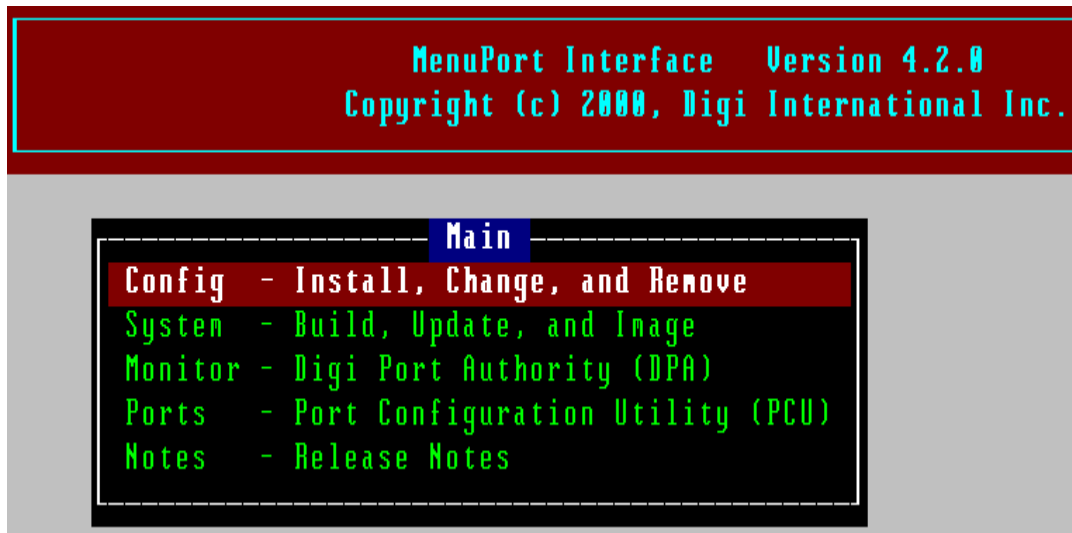
Now press **enter** to bypass the MPI startup screen

Now **spacebar** to go by the below Restricted Rights Legend Screen

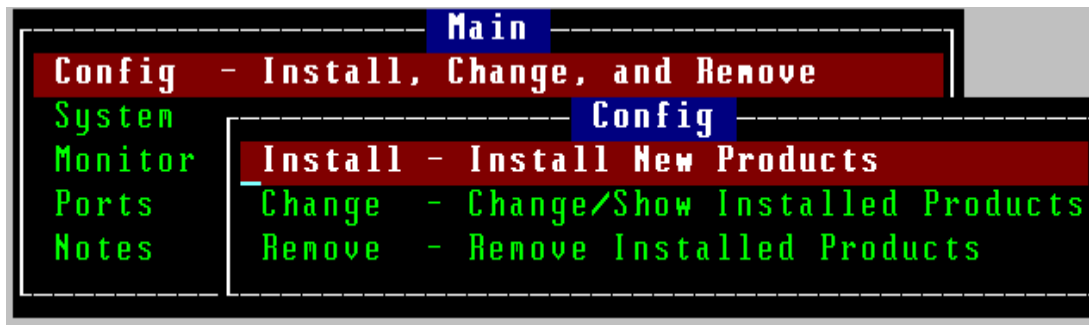
GRN 02/28/02



Select the first line highlighted “Config- Install, change, and or remove”



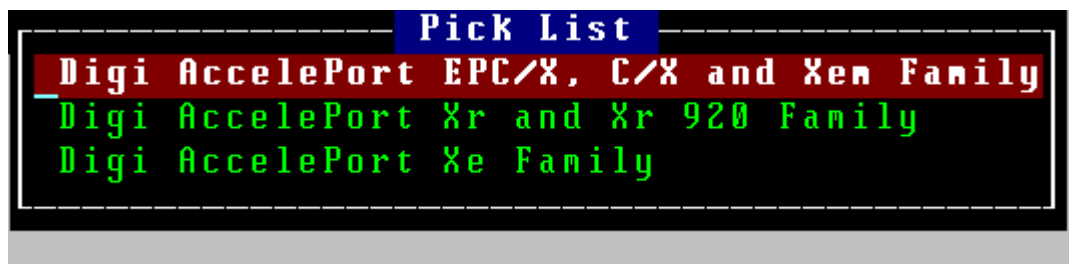
Regardless of the type of card that you are installing, you should now proceed to The following screen....



Config” “Install- Install New Products”

On the new screen you need to highlight and select the option...

“Digi Acceleport- EPC/X, CX and Xem Family”

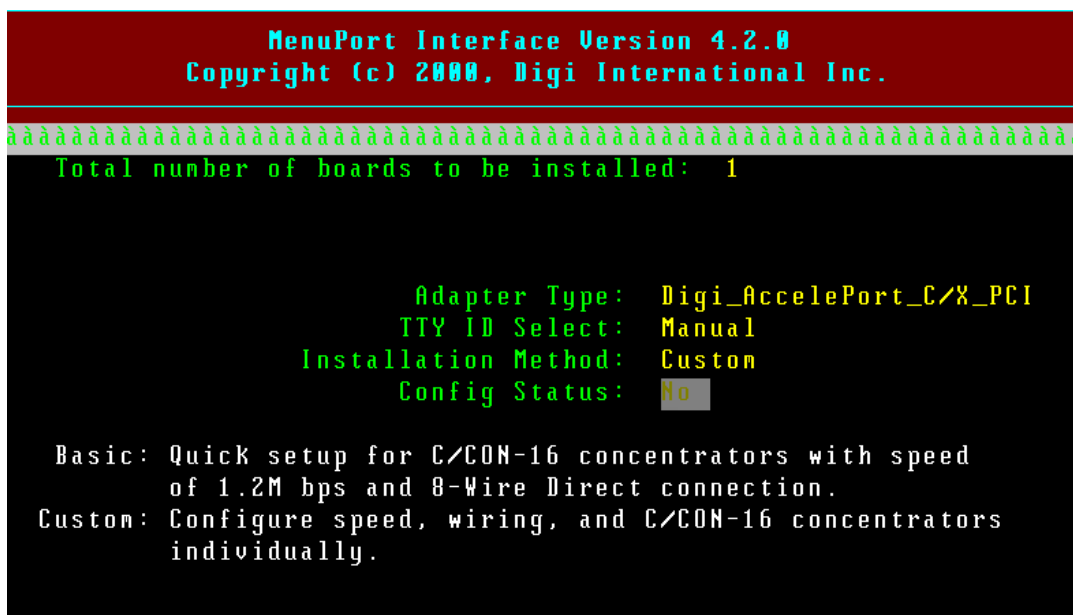


Notice the Basic and Custom detail information located on the bottom of the screen!

The first line will prompt you to enter “Total Number of Boards to be installed”

Typically “1” is our normal application. And “1” represents 1 Card, not 1 concentrator! This card has two output lines designated as “Line 1 and Line 2”. This card can be used for 8 port or 16 port concentrators. Each Card will support 7 concentrators. Note: ALL CX_ISA Cards require their dipswitches to be set or addressed! Typically you will install the ISA card in the lowest port on your computer. By doing so, you will need to address the card to the lowest address available. Typically “0x108” You may refer to the ABCS Install.doc for the correct settings. See last page of procedures on how to access the install.doc.

Our page below is the setup configuration for a EPC-X PCI Card



See example below...

If you are only installing one concentrator, arrow to line 2 configuration and set this line to none. Digi automatically assumes that you will install 1 concentrator per line, so we recommend that you set this line up the same as your other line, in the event of a primary line failure, so you can test with line 2. Make sure the line speed and nodes are correct for the single concentrator that you intend on using, then Hit **F2** and enter. (In our example, we are not using line 2 below)

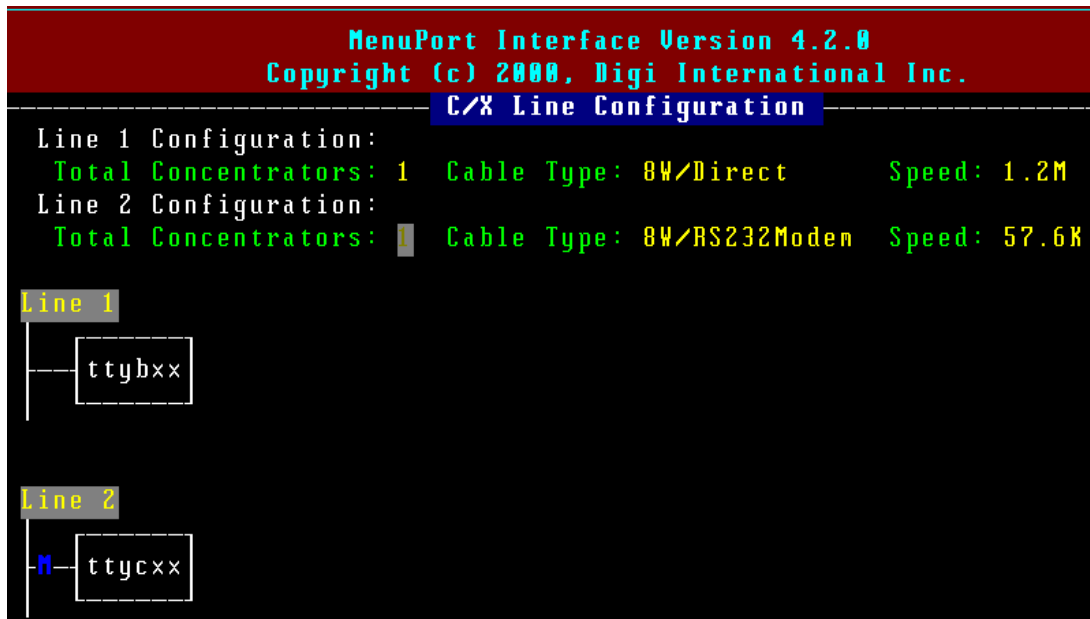
```
MenuPort Interface Version 4.2.8
Copyright (c) 2000, Digi International Inc.
-----C/X Line Configuration-----
Line 1 Configuration:
  Total Concentrators: 1  Cable Type: 8W/Direct      Speed: 1.2M
Line 2 Configuration:
  Total Concentrators: 0  Cable Type: 8W/RS232Modem  Speed: 57.6K

Line 1
|
|---ttybxx
|
Line 2
|
|---M
```

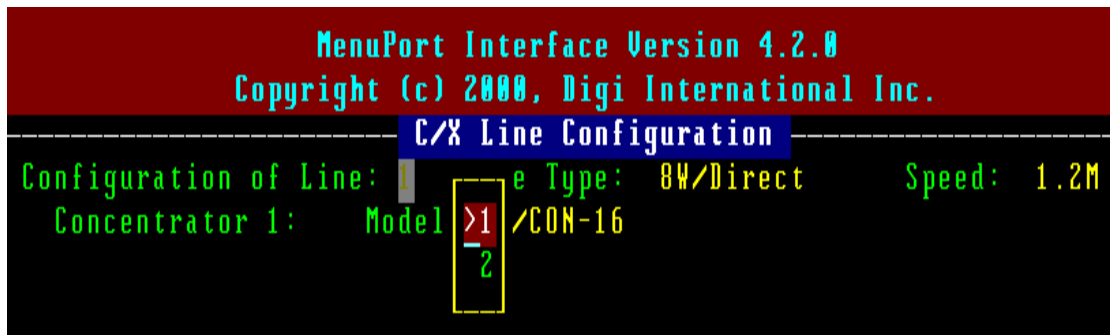
For a local connection, the typical setting would be 8-wire direct at 1.2M Speed
For a Remote Site the typical setting would be RS232 connection at 56K/64K

Remember if you are installing a EPC/X card, your settings should default to C/CON-16 automatically, (which you can change to an 8 port if desired). However, you may need to change the line speed and the connection type for your desired setting.

If you are setting up a remote location, then set the Line 2 up (as in our example) with a line speed of 56K using an RS232 Modem connection



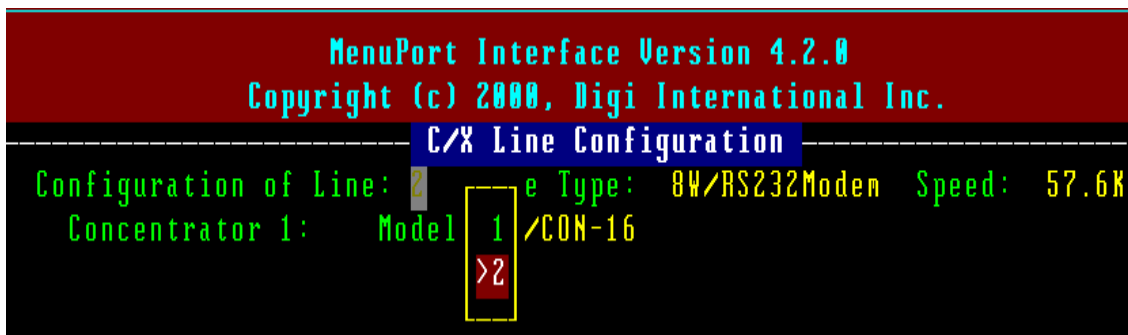
Using either setup.... your next screen should appear as below.



Line 1 settings are listed above. Note: Use C/Con-16!

Line 2 settings are listed above. This Line is not being used!

However, if line 2 were to be utilized for a remote site running a 56K Digital line, then you would see something like what is listed below.



Notice the indication that Concentrator 1 "is" being used on Line 2. You did not see that indication in the previous picture.

When setup properly, you should ONLY see the reference of C/CON!

```
Adapter Type: Digi_AccelerPort_C/X_ISA
I/O Address: 0x108
Memory Address: 0x000D8000
TTY ID Select: Manual
Installation Method: Custom
Config Status: Yes
```

When set up properly, you should only see the choice of C/CON-16 or 8!

```
----- C/X Line Configuration -----
Configuration of Line: 1 Cable Type: 8W/Direct Speed: 1.2M
Concentrator 1: Model: C/CON-16
>C/CON-16
C/CON-8
```

On your next screen (see example) you will be asked several questions that should be answered as follows.

```
MenuPort Interface Version 4.2.0
Copyright (c) 2000, Digi International Inc.
aaaaaaaaaaaaaaaaaaaaaaaaaaaaaaaaaaaaaaaaaaaaaaaaaaaaaaaaaaaaaaaa
----- Dscreen/AltPin -----
Do you wish to install DigiScreen? Yes
Number of DigiScreen devices: 32
AltPin setting: On
```

Are you going to use Digi screens answer (YES)

The number of Digi Screens that you are using answer (32)

MAKE SURE THAT YOU CHANGE THE "ALT PIN" SETTING TO "ON"
(If altpin is not set to on, you will not connect to the modem)

Select **F5** to continue

***Don't relink inside.** Answer **NO** until you are all the way out of the digicfg screen...when the screen is black and running the script that will relink the kernel.

Install.doc Reference File

To get to the addressing file for Digiboard installation you will need to do the following..

- a. From the prompt type #. **gdoc**
(Above the prompt you should see /work/xfiles/docs
- b. From the prompt type # **te install.doc**
(A large file will appear)
- c. Select the **F-2** option menu option at the top of your screen
- d. You will be prompted with a menu
- e. From this menu select the option "**G**" to go to Line Number
- f. Enter into that slot the number "**1189**", then hit **enter**. This will take you to the start of the document that will help you address your digiboard. Line 1219 is very specific for the addressing of a single Local ISA Xem card.

Please remember that PCI cards are "Auto Detect", with no Switch settings.