

TARANTELLA SETUP

From the prompt type:# **mount -olower /dev/cd0 /mnt**

From the prompt type:# **cd /mnt**

From the prompt type:# **lf**

3270cp/	ttaax01.shx*	ttaficl.shx*	ttai3sc.shx*	tarsai.shx*
readme.en*	ttafandr.shx*	ttaforie.shx*	ttai3un.shx*	ttaspso.shx*
tsp/	ttafhang.shx*	ttafscot.shx*	ttapahp.shx*	wcp/

From the prompt type:# **sh ttai3sc.shx**

Tarantella Enterprise II

Tarantella Setup is checking for disk space requirements
Setup is installing pkgadd programs in /usr/package...
Tarantella Enterprise II for SCO OpenServer Release 5.0.2+
Preparing for installation...

SCO Software License Agreement

To use Tarantella you must agree to be bound by
the terms of the Software License Agreement.

Y - I have read, and accept the terms of the license agreement
N - I do not accept the terms of the license agreement
R - Let me read the license agreement

Accept terms of Software License Agreement? [R] y

Setting up Tarantella

Tarantella Setup recommends you use the following settings:

Installation type = reinstall 1.41
License mode = Evaluation (60-day limit)
Installation directory = /opt/tarantella
Configuration directory = /var/tarantella
Archive logs every week? = yes (Sunday 03:00 hours)

Are these settings OK?

Y - Yes, install using these settings
N - No, explain the options and let me change the settings
Q - Quit now **OK to use these settings? [Y]**

This is a list of the Tarantella Setup settings screens that you should see during the process. Note: some of these settings may change Due to updates!

```
Tarantella Setup is recording settings...
Tarantella Setup is installing files...
Configuring your installation...
Starting Tarantella 1.41.907 from /opt/tarantella/bin/i3sc0325...
.Upgrading database from 1.41.902
Recording existing configuration information
Administration objects are seen by: .../_ens/GlobalAdministrators
Recording ".../_ens/Org".....
Saving existing configuration in
/var/tarantella/database.1.41.902.0
New configuration goes in /var/tarantella/database
Processing configuration information
7% 14% 21% 28% 35% 42% 50% 57% 64% 71% 78% 85% 92%
Modifying configuration
information.....
Creating webtops for organizational units...
Creating webtops for other objects...
Tarantella configuration complete
Configuring Tarantella printing...
Installing printer configuration file...
Installing lp/lpr "wrapper" scripts...
Local system type is SCO OpenServer.
/etc/printcap: removing existing entry for tta_printer
status=0
Running: /usr/lib/lpadmin -xtta_printer
status=0
Informing lp subsystem about local printer tta_printer...
Running: /usr/lib/lpadmin -ptta_printer -v/dev/null -
ilp_interface -Iany -onobanner
status=0
Running: enable tta_printer
printer "tta_printer" now enabled
status=0
Running: accept tta_printer
destination "tta_printer" now accepting requests
status=0
Running: /etc/rlpconf
Remote Printing Configuration
```

Enter information for remote printers or local printers accepting remote printing requests

```
Please enter the printer name (q to quit):
Is tta_printer a remote printer or a local printer (r/l)?
Please enter the the name of the device for tta_printer:
Printer tta_printer uses device /dev/null
```

Is this correct? (y/n)
Putting tta_printer in printer description file and creating
spool dir...done

Remote Printing Configuration

Enter information for remote printers or local printers accepting
remote printing requests

Please enter the printer name (q to quit):
status=0
Success.
Successfully installed Tarantella Enterprise II for SCO
OpenServer Release 5.0.2+ <tta>

Tarantella Enterprise II Java Archives

Preparing for installation...
Tarantella Setup is installing files...
Successfully installed Tarantella Enterprise II Java Archives
ttajava>
Starting Tarantella server, please wait.....
The Tarantella server is now running.

To use Tarantella, you must first configure a web server on this
host:

Add a Document directory for the Tarantella installation
directory:

Make /tarantella map to /opt/tarantella

Add a Program (CGI) directory for the Tarantella cgi-bin
subdirectory:

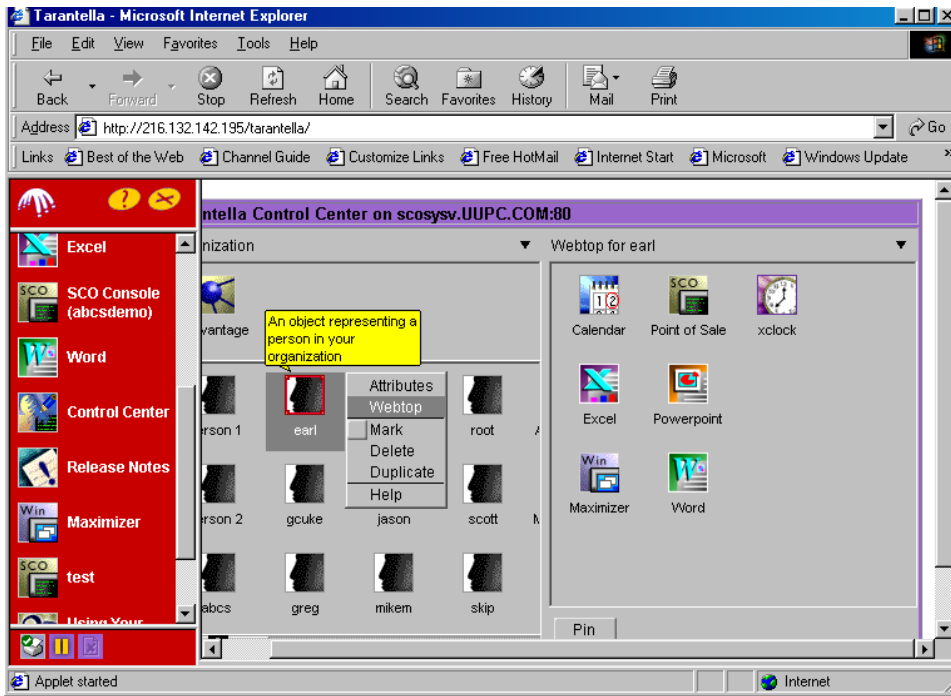
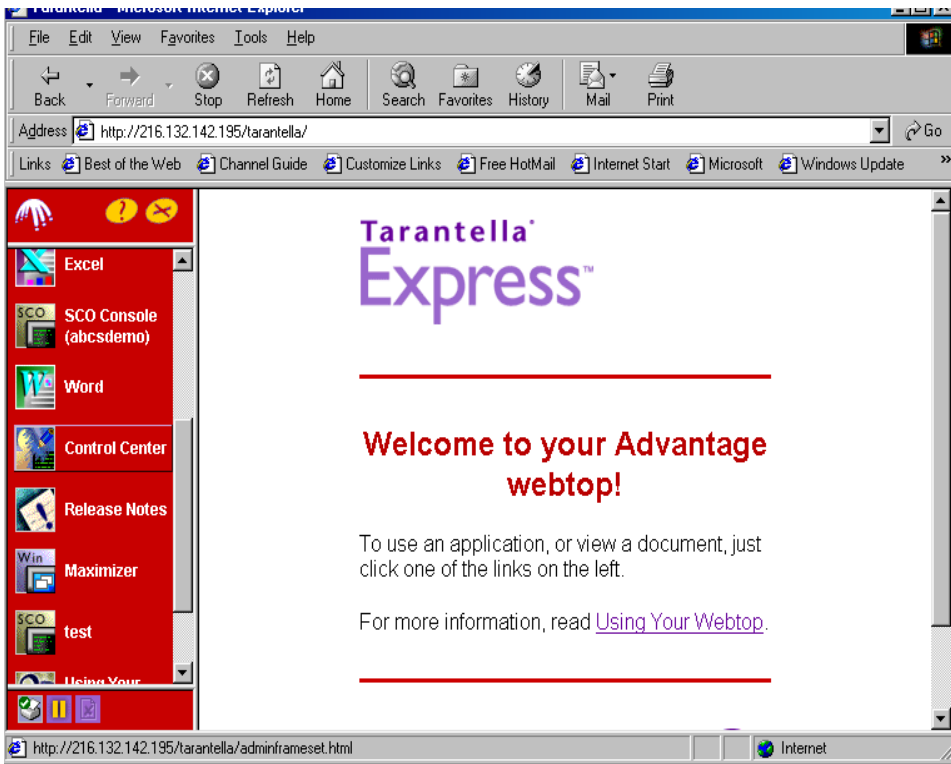
Make /tarantella/cgi-bin map to /opt/tarantella/cgi-bin

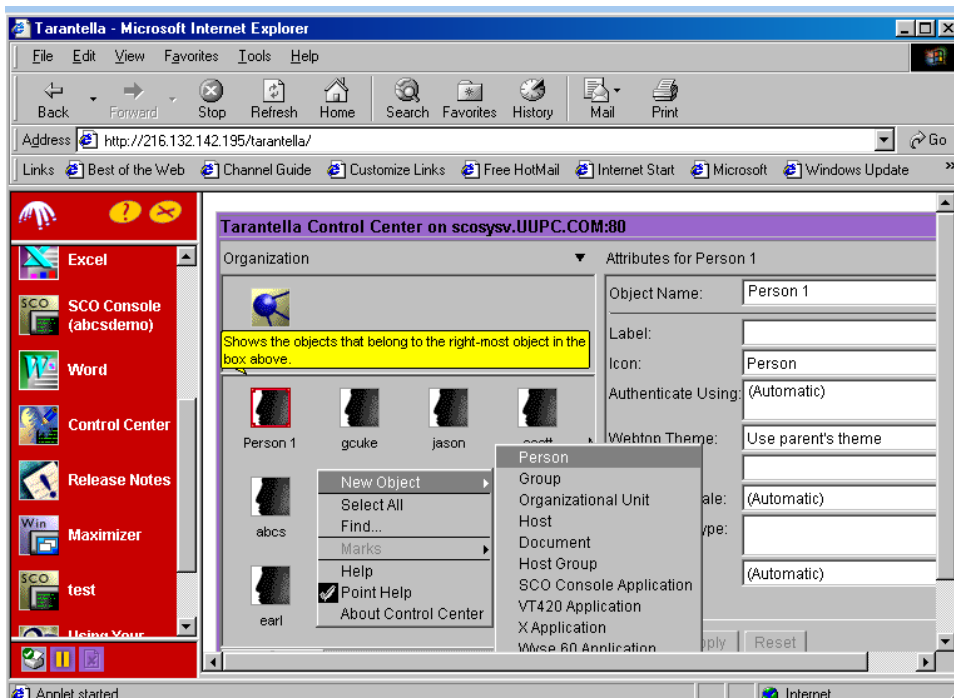
Make sure that your system is set up to support remote
printing, and that it will also accept remote print requests from
all your application hosts. You may do so by Consulting your
System Administration about current documentation & setup
procedures. For full instructions, consult the Readme file
located in: **opt/tarantella/readme.en.html** And/Or You may find up
-to-date information at: **<http://tarantella.sco.com/knowhow>**

To get started quickly, configure the web server then go to
<http://<server>/tarantella>
Log into Tarantella as a Tarantella Administrator, and click
Control Center.

From the prompt type: # **umount /mnt**
Now, To license tarantella:
From the prompt type: # **cd /opt/tarantella/bin**
From the prompt then type: # **tarantella license --add number**
You may then start the scolgin screen,
From the prompt type: # **scolgin enable**
NOTE: make sure a mouse is configured
Now....
Login to the Scolgin as **root**
Select and click on the Internet configuration Icon
Now login as admin using **root's password**
Now select and click on the web icon
Now select and click on port 80
Now select and click on content manager
Now select and click on Additional Documents
Now type URL tarantella
map to /opt/tarantella
Now click on ok to save changes
Now click on programs
Now type on URL line tarantella/cgi-bin
map to /opt/tarantella/cgi-bin
Now click on ok to save changes
Now close Netscape Navigator screen
From the prompt type: # **scadmin**
Now select to "add a user"
Note: Give each tarantella user a login and password
Now go to a PC>Start the browser>Enter your Servers IP Address
Example: 216.132.142.195/tarantella
Now Login as root with the root password
You should be ready to go now!login as root passwd of root
click on control panel







right click in window ,go to new object ,then person

In the attributes page change object name to persons name you are setting up

Eg; bob

Authenticate using _user/bob

Click on apply and right click on bob and go to webtop

Drag any Icon you want bob to use into the webtop screen

Click on the x to exit then the y,,, then login as bob