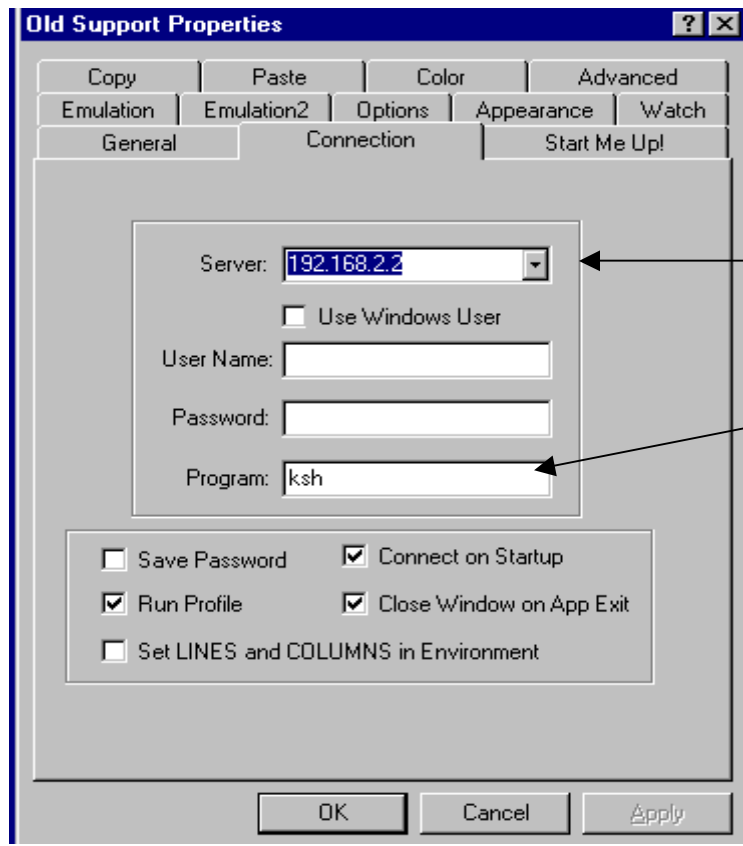
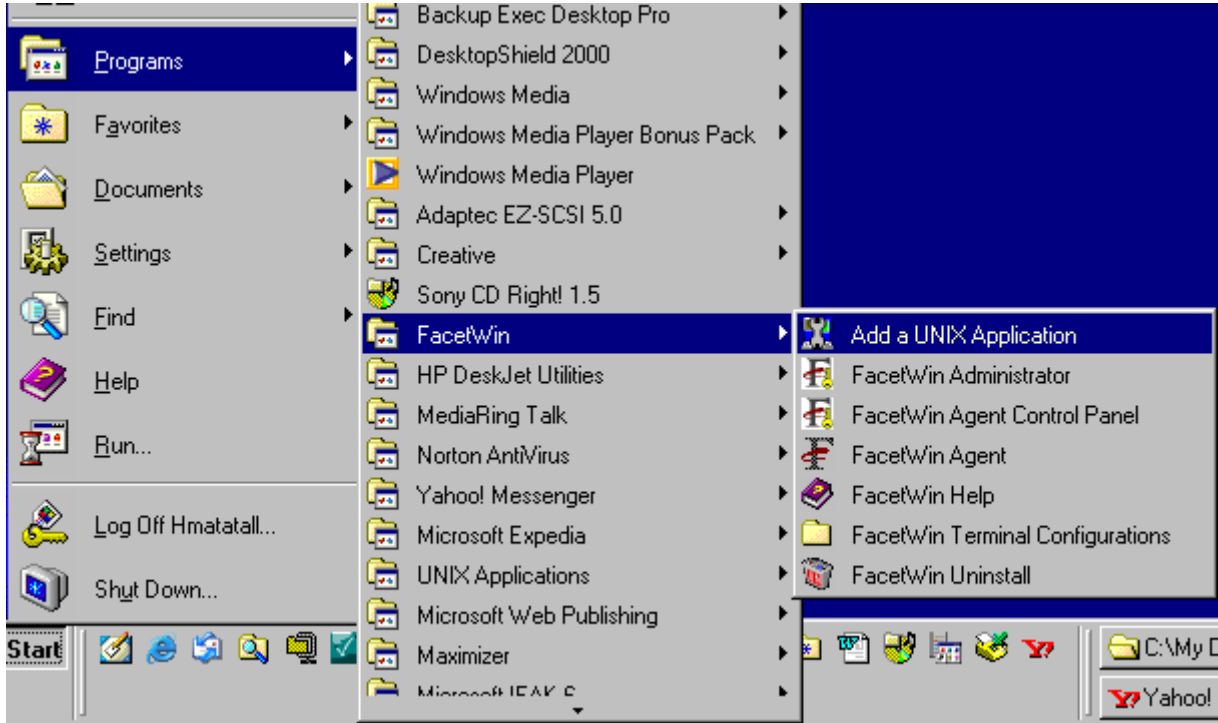


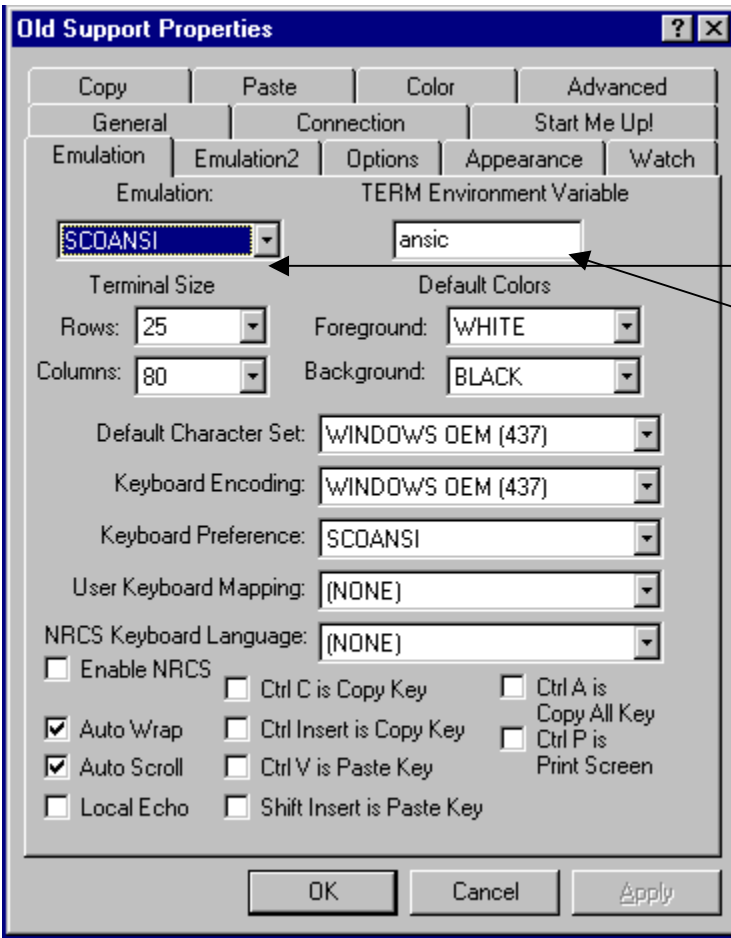
# FACETWIN 2.0 INSTALLATION

- A. Insert the CD into the CD-Rom. The CD should start autoloading!
- B. Answer all of the questions appropriately for your location. You should now be able to proceed.
- C. With your mouse click on the **Start Menu>Programs>Facetwin Program> Add a Unix Application**



Insert Your Advantage Servers IP Address Here.

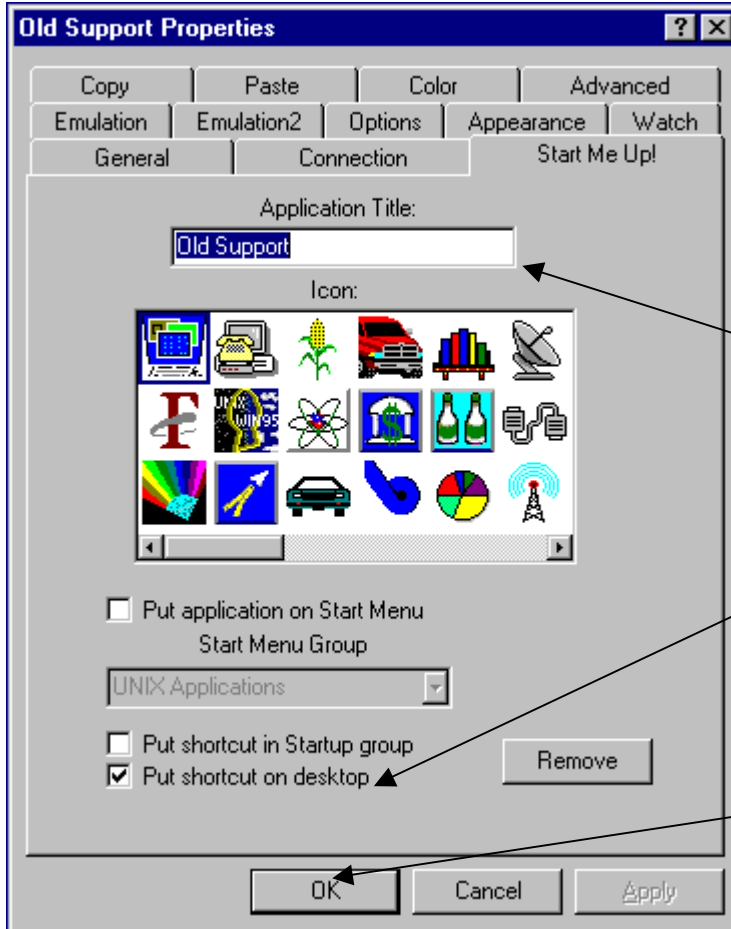
Insert the letters "ksh" here.



On the emulation page.....

Change the emulation to "SCOANSI"

Change the Term Environment Variable to "ansic"



Put the name you wish to be associated with the ICON located on your desktop- HERE!

Put a check in the Put shortcut on desktop!

Press "OK" when you have completed your enties!

When completed with your PC, .... Return to your Unix Server.

From the prompt type # cd /etc then hit the enter key

From the prompt type # nte hosts then hit the enter key

You should see a screen that resembles the below screen....

As an example, if I was keeping in sequence, under the heading "linux routers"

I would add my next PC with the following entry **\*\*\*192.168.4.1 gw4\*\*\***

Once you have made your entry, in your hosts file, hit the F-2 button, and "X" to save. Then...

```
[F1]-Help [F2]-Menu te15178hosts
.te v1.36/960531 /work3/home/herb/
#
# Outside Network
#
216.132.142.229 www
216.132.142.209 www2
#
# linux router
#
127.0.0.1 localhost.localdomain localhost
216.132.142.253 lnxrtr.abcsinc.com
192.168.1.1 gw1
192.168.2.1 gw2
192.168.3.1 gw3
#
# In house Servers
#
192.168.2.2 abcssup abcssup.abcssupport.com
192.168.2.3 abcsofc abcsofc.abcssupport.com
192.168.2.4 abcsn abcsn.abcssupport.com #
```

Below is the edited hosts file, with our new example PC entry

```
[F1]-Help [F2]-Menu te15512hosts
.te v1.36/960531 /work3/home/herb/
#
# Outside Network
#
216.132.142.229 www
216.132.142.209 www2
#
# linux router
#
127.0.0.1 localhost.localdomain localhost
216.132.142.253 lnxrtr.abcsinc.com
192.168.1.1 gw1
192.168.2.1 gw2
192.168.3.1 gw3
192.168.4.1 gw4
#
```

The last entry you need to make will be in the termdevs.cfg file...

From the prompt type # **cd /work/configs**

Then hit the enter key

From the prompt type # **lf**

Then hit the enter key (list files)

For reference, you should see a screen similar to the below screen. Note the file "**termdevs.cfg**"!

```
basic.env          getcallr.ap_     poshog4b.fr_  
basicprg.mnu       getcallr.app     poshog4b.frm  
bills.rpf         gregftp.rpf      printdft.cfg  
boone.env         hello.rpf        printque.cfg  
boone.set         hisdelet.dat     printque.cfg.1002  
break.rpf         hpreset         s+k.env  
cashrec.rpf       hpreset         security.pth  
ccvshist/         hpreset         setclistmode  
cmflag.cfg        hpreset2        setmmvars  
dacman.rpf        hpreset2.bak    termdevs.c.bak  
dailycus.rpf      icverify.mnu     termdevs.cfg  
dennis.rpf        intrate.rpf      termdevs.cfg.0712  
dmflag.cfg        jobcpost.cfg     termdevs.cfg.bak  
dummy.set         jobcpost.cfg.0316 termdevs.cfg.blanks  
eodbatch.cfg      kevin.rpf        termdevs.cfg.larence  
eodmulti.cfg      larence.env     termdevs.cfg.save  
eombatch.cfg      larence.set     termdevs.cfg.tim  
                  laxative.rpf
```

From the prompt type # **nte termdevs.cfg** Then hit the enter key

You should see a screen that resembles the following screen. To edit this file, go to the last line, and edit the file as we have with our example "**gw4.1, gw4.2**". When you have completed your editing Simply hit the **F-2** button and select the "**X**", and answer "**yes**" to save and exit. You should now be ready to utilize Facetwin, (on your PC), to access the Advantage Software System.

```
[F1]-Help [F2]-Menu te16859termdevs.cfg  
_te v1.36/960531 /work3/home/herb/  
/dev/tty01  
/dev/tty02  
/dev/tty03  
edbrown  
officeman.1  
officeman.2  
president.1  
president.2  
owner.4  
owner.5  
hardwar2  
hardwar3.3  
hardwar4.3  
hardwar4.4  
hardwar4.5  
hardwar5.3  
hardwar6.3  
hardwar7.3  
gw4.1  
gw4.2
```

