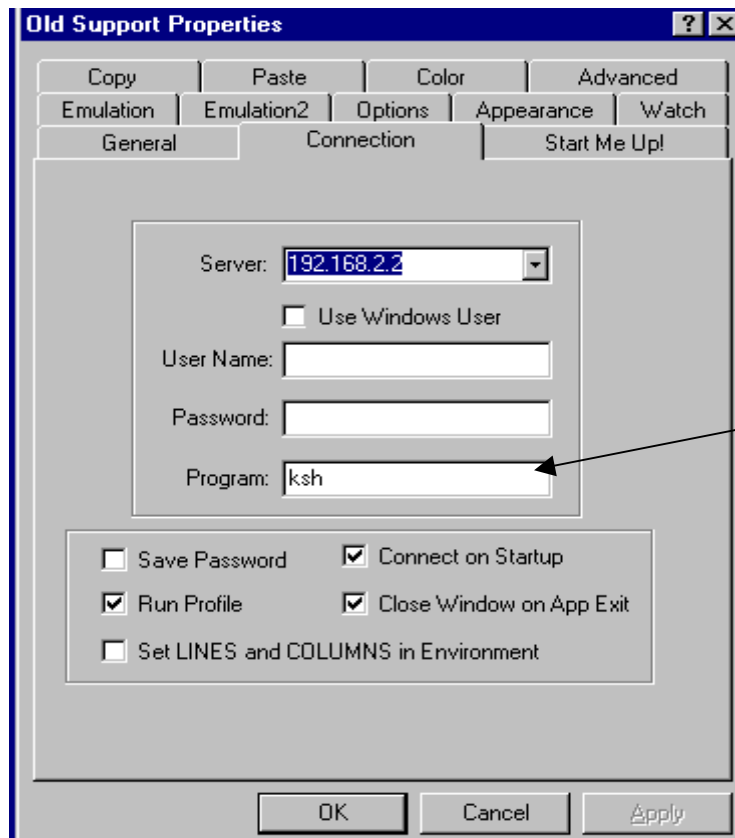
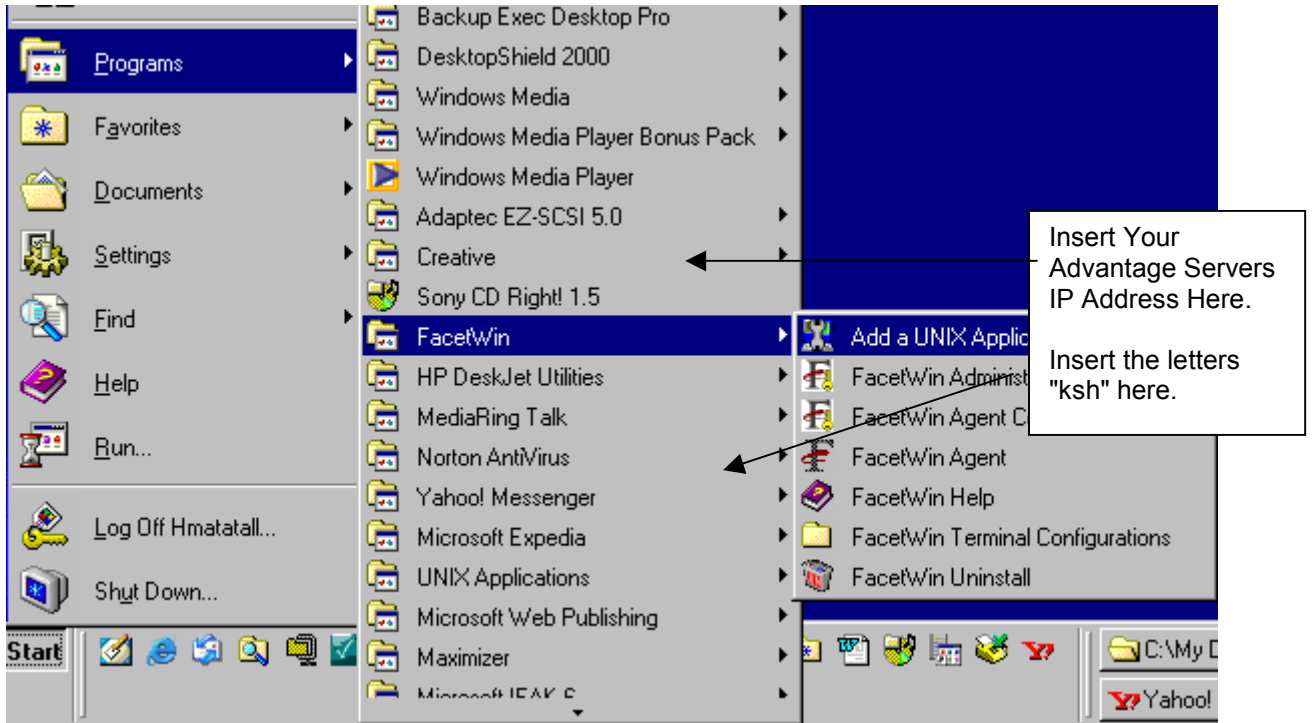
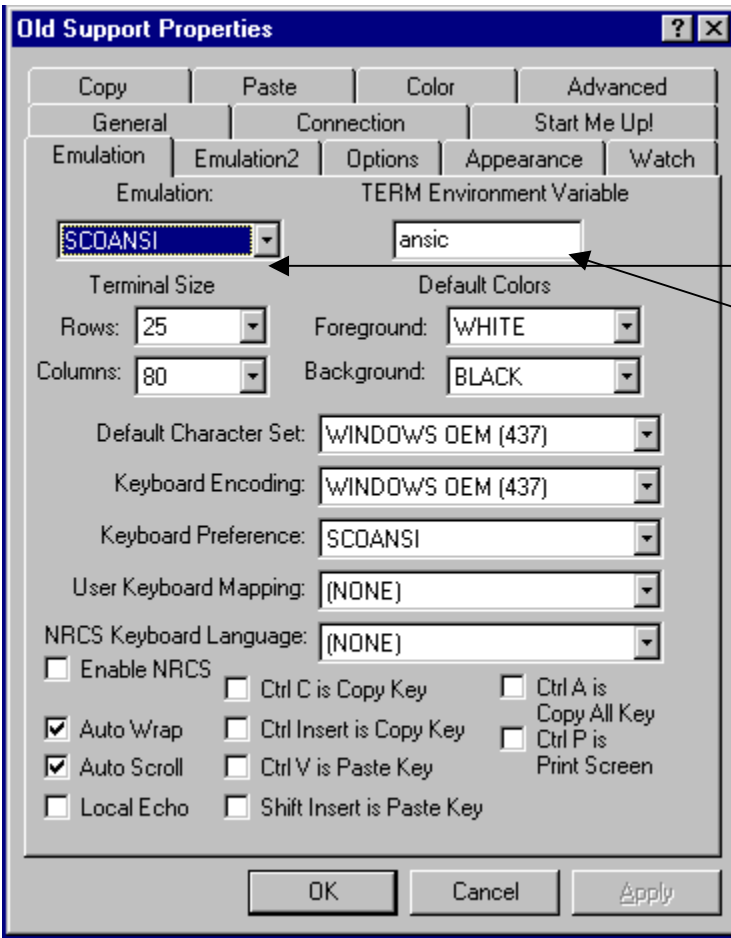


FACETWIN 2.0 INSTALLATION

- A. Insert the CD into the CD-Rom. The CD should start autoloading!
- B. Answer all of the questions appropriately for your location. You should now be able to proceed.
- C. With your mouse click on the **Start Menu>Programs>Facetwin Program> Add a Unix Application**

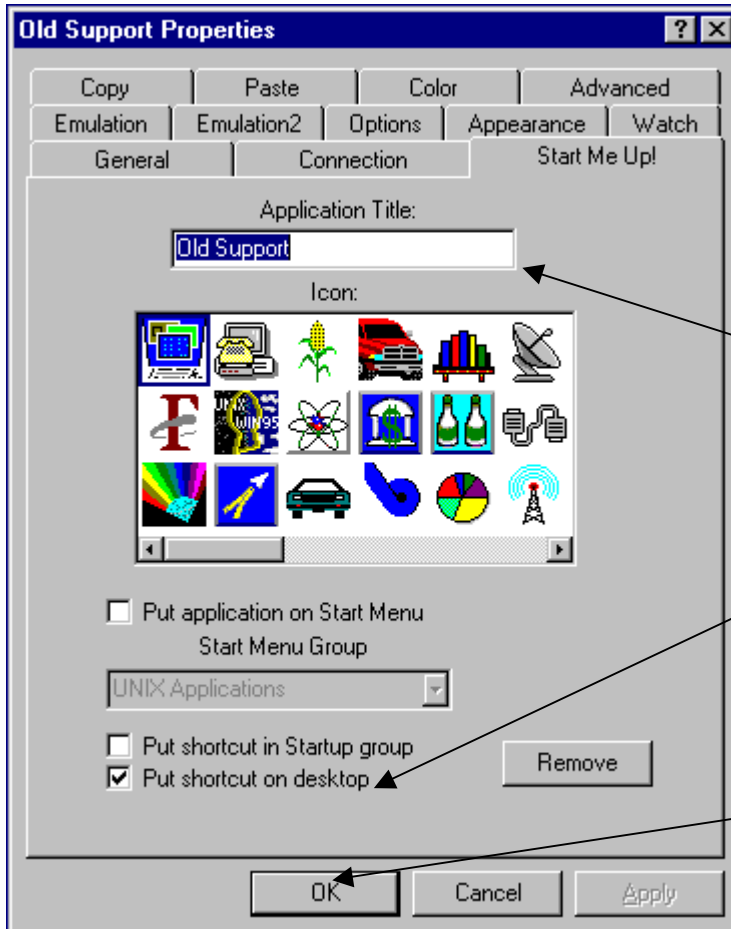




On the emulation page.....

Change the emulation to "SCOANSI"

Change the Term Environment Variable to "ansic"



Put the name you wish to be associated with the ICON located on your desktop- HERE!

Put a check in the Put shortcut on desktop!

Press "OK" when you have completed your enties!

When completed with your PC, Return to your Unix Server.

From the prompt type # cd /etc then hit the enter key
From the prompt type # nte hosts then hit the enter key
You should see a screen that resembles the below screen....

As an example, if I was keeping in sequence, under the heading "linux routers"
I would add my next PC with the following entry *****192.168.4.1 gw4*****

Once you have made your entry, in your hosts file, hit the F-2 button, and "X" to save. Then...

```
[F1]-Help [F2]-Menu te15178hosts
.te v1.36/960531 /work3/home/herb/
#
#  Outside Network
#
216.132.142.229 www
216.132.142.209 www2
#
#  linux router
#
127.0.0.1 localhost.localdomain localhost
216.132.142.253 lnxrtr.abcsinc.com
192.168.1.1 gw1
192.168.2.1 gw2
192.168.3.1 gw3
#
#  In house Servers
#
192.168.2.2 abcssup abcssup.abcssupport.com
192.168.2.3 abcsofc abcsofc.abcssupport.com
192.168.2.4 abcsn abcsn.abcssupport.com #
```

Below is the edited hosts file, with our new example PC entry

```
[F1]-Help [F2]-Menu te15512hosts
.te v1.36/960531 /work3/home/herb/
#
#  Outside Network
#
216.132.142.229 www
216.132.142.209 www2
#
#  linux router
#
127.0.0.1 localhost.localdomain localhost
216.132.142.253 lnxrtr.abcsinc.com
192.168.1.1 gw1
192.168.2.1 gw2
192.168.3.1 gw3
192.168.4.1 gw4
#
```

The last entry you need to make will be in the termdevs.cfg file...

From the prompt type # **cd /work/configs**

Then hit the enter key

From the prompt type # **lf**

Then hit the enter key (list files)

For reference, you should see a screen similar to the below screen. Note the file "**termdevs.cfg**"!

```
basic.env          getcallr.ap_      poshog4b.fr_  
basicprg.mnu       getcallr.app      poshog4b.frm  
bills.rpf          gregftp.rpf       printdft.cfg  
boone.env          hello.rpf          printque.cfg  
boone.set          hisdelete.dat     printque.cfg.1002  
break.rpf          hpreset           s+k.env  
cashrec.rpf        hpreset           security.pth  
ccvshist/          hpreset           setclistmode  
cmflag.cfg         hpreset2          setmmvars  
dacman.rpf         hpreset2.bak      termdevs.c.bak  
dailycus.rpf       icverify.mnu      termdevs.cfg  
dennis.rpf         intrate.rpf       termdevs.cfg.0712  
dmflag.cfg         jobcpost.cfg      termdevs.cfg.bak  
dummy.set          jobcpost.cfg.0316 termdevs.cfg.blanks  
eodbatch.cfg       kevin.rpf         termdevs.cfg.larence  
eodmulti.cfg       larence.env       termdevs.cfg.save  
eombatch.cfg       larence.set       termdevs.cfg.tim  
                    laxative.rpf
```

From the prompt type # **nte termdevs.cfg** Then hit the enter key

You should see a screen that resembles the following screen. To edit this file, go to the last line, and edit the file as we have with our example "**gw4.1, gw4.2**". When you have completed your editing simply hit the **F-2** button and select the "**X**", and answer "**yes**" to save and exit. You should now be ready to utilize Facetwin, (on your PC), to access the Advantage Software System.

```
[F1]-Help [F2]-Menu te16859termdevs.cfg  
_te v1.36/960531_____ /work3/home/herb/  
/dev/tty01  
/dev/tty02  
/dev/tty03  
edbrown  
officeman.1  
officeman.2  
president.1  
president.2  
owner.4  
owner.5  
hardwar2  
hardwar3.3  
hardwar4.3  
hardwar4.4  
hardwar4.5  
hardwar5.3  
hardwar6.3  
hardwar7.3  
gw4.1  
gw4.2
```