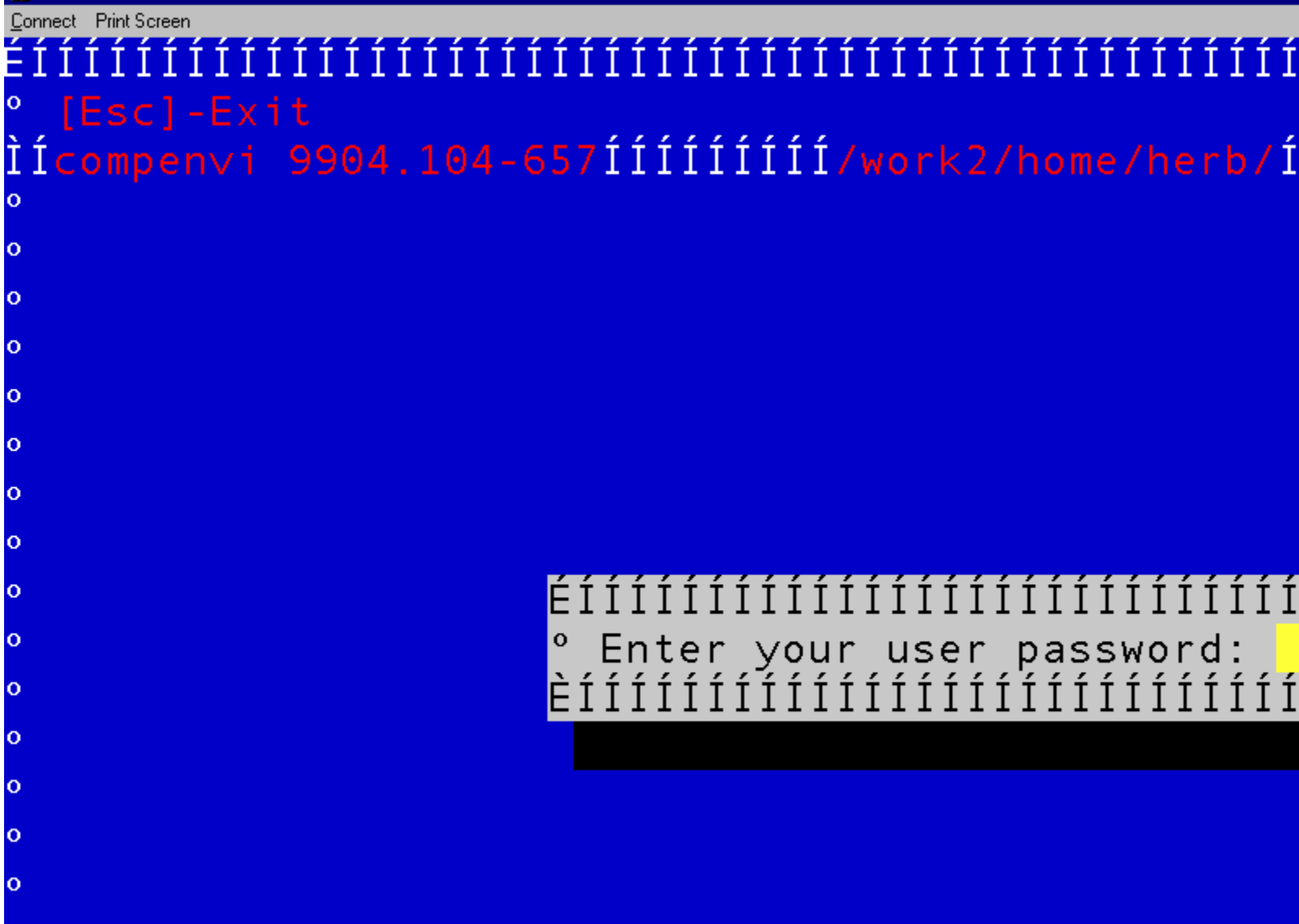


FONT AND OR EMULATION ISSUE ON PC'S

When installing Adwin on your PC (Win 98,2000,XP), you may encounter the following screen emulation example (while logging into the ABCS Server)



As you can see by the pictoral above, the font setting is incorrect.

On the Desktop of your PC,....

- Select **Connect>Font>Term** is type, the size font should be **26**
- Select the close option and check out your screen now.

If that does not work....

- Select the **Start>Control Panel>Font Button**.....then select the option "**Terminal Font or "Term"**". Then hit the **Done key** and repeat steps "A" and "B" again! This should work for you!
Good Luck