

ADWIN SCREEN LOCKS

“THIS TERMINAL DEVICE IS NOT CONFIGURED”

NOTE: Do not perform any of these below actions before you log out of All Adwin Screens!

The following actions are recommended “**assuming**” that yesterday your PC logged in and worked properly.

Today, when logging in, you get the message “This terminal device is not configured”. The fix for this screen lock function is as follows....

Double click on the desktop Icon “**My computer**”
Double click on the **C Drive**
(You should now see the directories/files located on the C Drive)
Click on the “**Adwin**” Folder

The items you are looking for are listed as follows....

“SCR1, SCR2, SCR3..... and any other icons that have the **SCR** prefix.

Once you see the appropriate files (ex: SCR1, SCR2) highlight the icons, right click, and select the delete option.

These definitions should now be eliminated from the Adwin directory.

Please Confirm that these entries have been deleted!

Now, If you are wanting to set up multiple screens using the same screen numbers, but utilizing different servers!

On the PC loading with Adwin...go to the **Start Menu>Programs>Windows Explorer>Adwin**

Once you are in the Adwin directory, select the File Menu button at the top of your screen

Once selected, create a new folder called, in our example, **office (or whatever)**

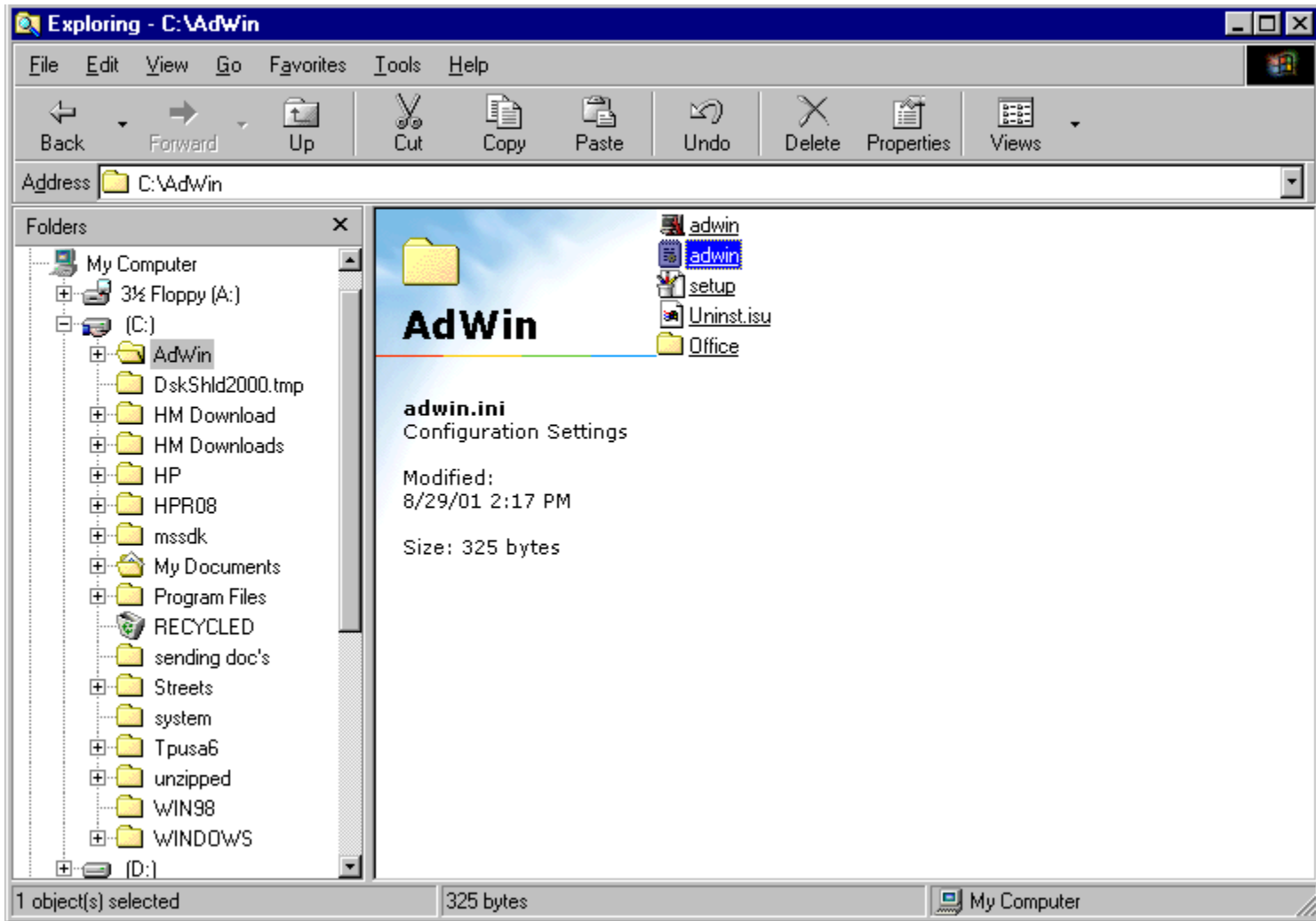
You are now finished with the editing of your Windows Explorer

From your Main Menu highlight the Adwin Icon,

Now right clicking on the Adwin Icon>Select Properties>Now edit the Start In line to read (in our example) **\Adwin\Office**

Create this "Start in" change for any server that you are wanting to have the same sequence numbers!

Below I have given you an example of the Windows Adwin Directory with the new file folder **"Office"**



HBM 4-3-2001
HBM 8/30/2001