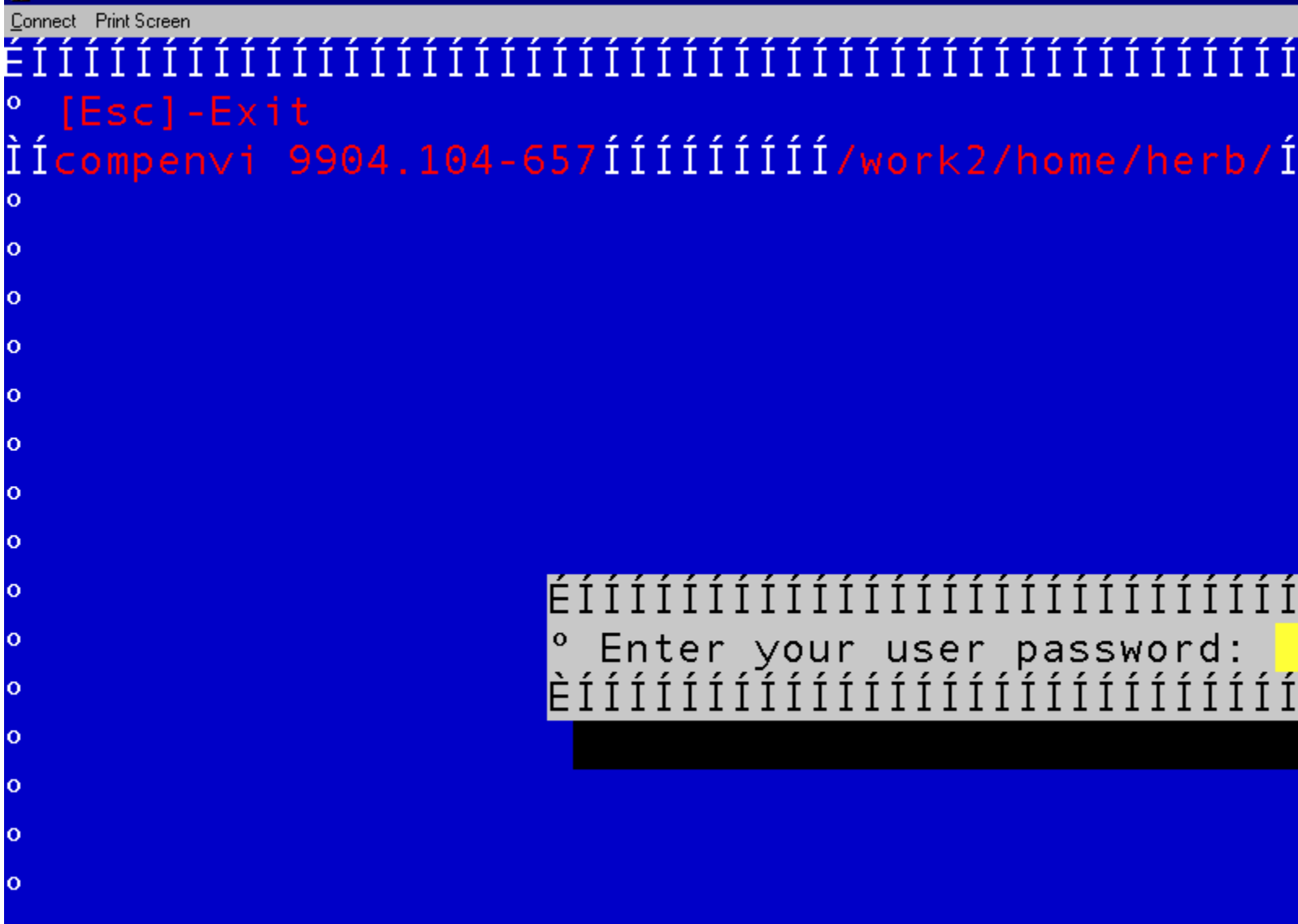


## FONT AND OR EMULATION ISSUE

Once you have installed Adwin, you may encounter the problem where your log on to the Advantage System looks like the following.....



As you can see by the pictoral above, the font setting is incorrect.

- Select Connect>Font>Term and the size of your font should be 26
- Select the close option and check out your screen now. (If it still doesn't look right)
- Select the Start>Control Panel>Font Button.....then select the option "Terminal Font or "Term". Then hit the done key and repeat steps "A" and "B" again! This should work for you! Good Luck

HBM 8/30/2001