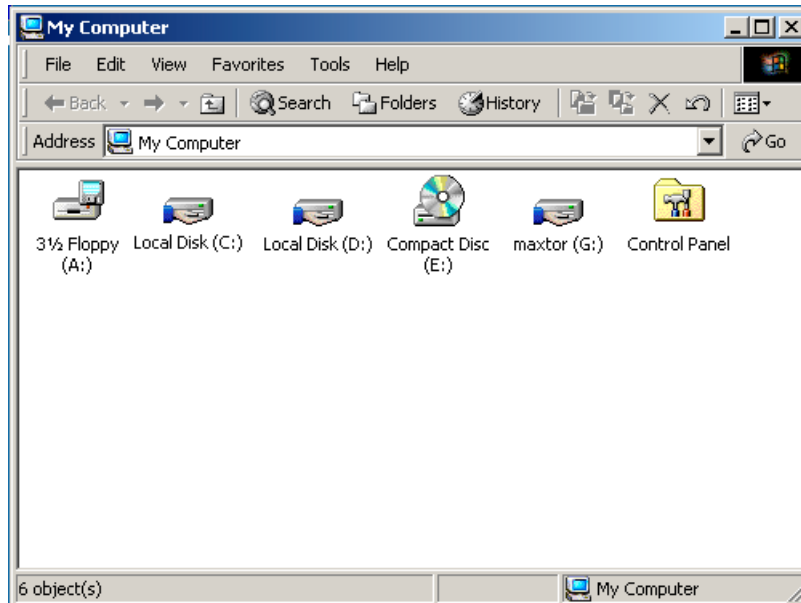


Installing Adwin on an Advantage PC

1. Close all windows that are open on the pc.
2. Insert the adwin disk into the floppy drive.
3. Double click on the My Computer Icon.

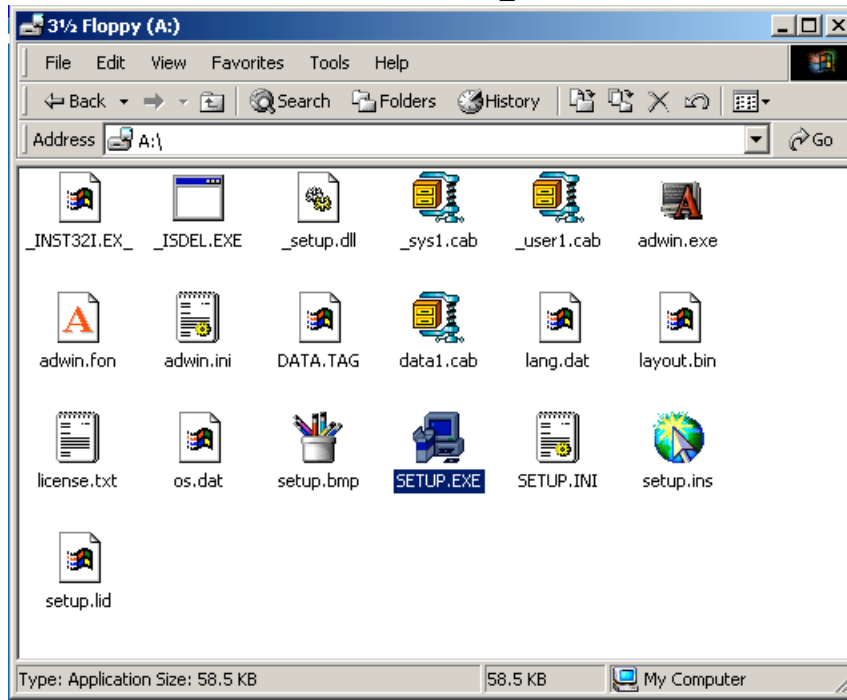


4. Double click on the 3 1/2 Floppy (A:) Icon.

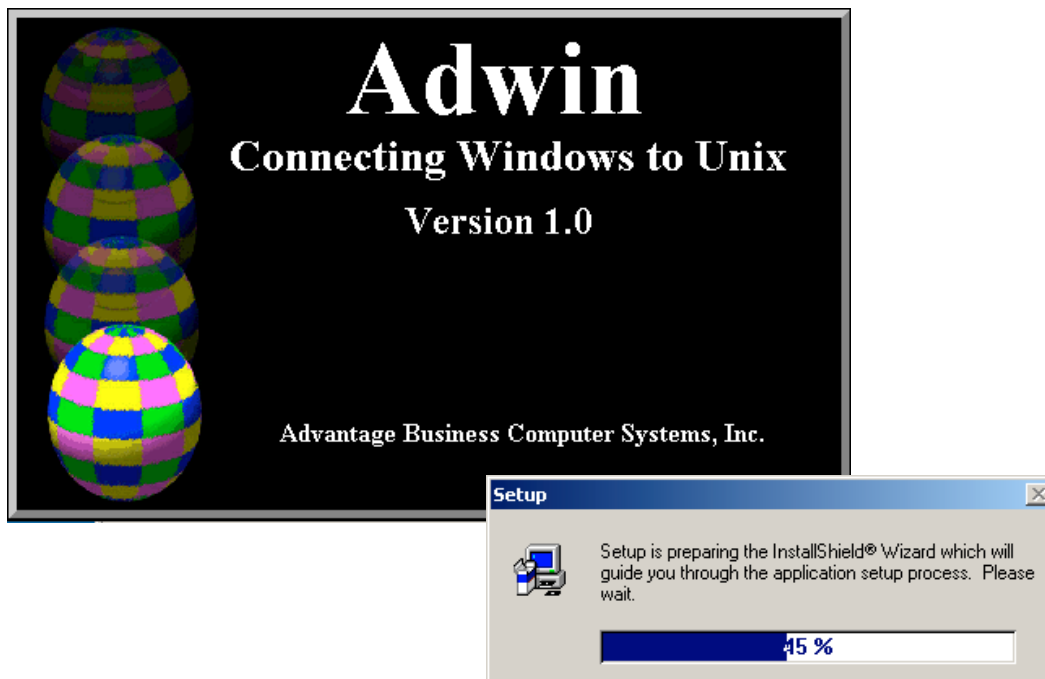


Installing Adwin on an Advantage PC

4. Double click on the setup.exe Icon.

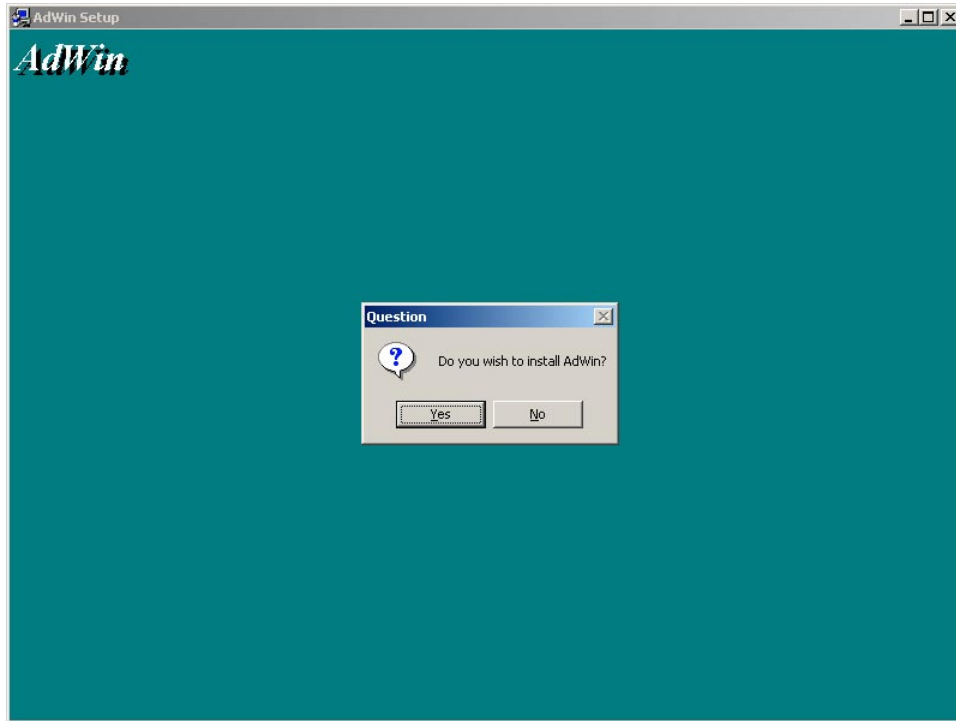


5. Adwin will begin to load the setup program. Do not do anything while the setup program is loading.

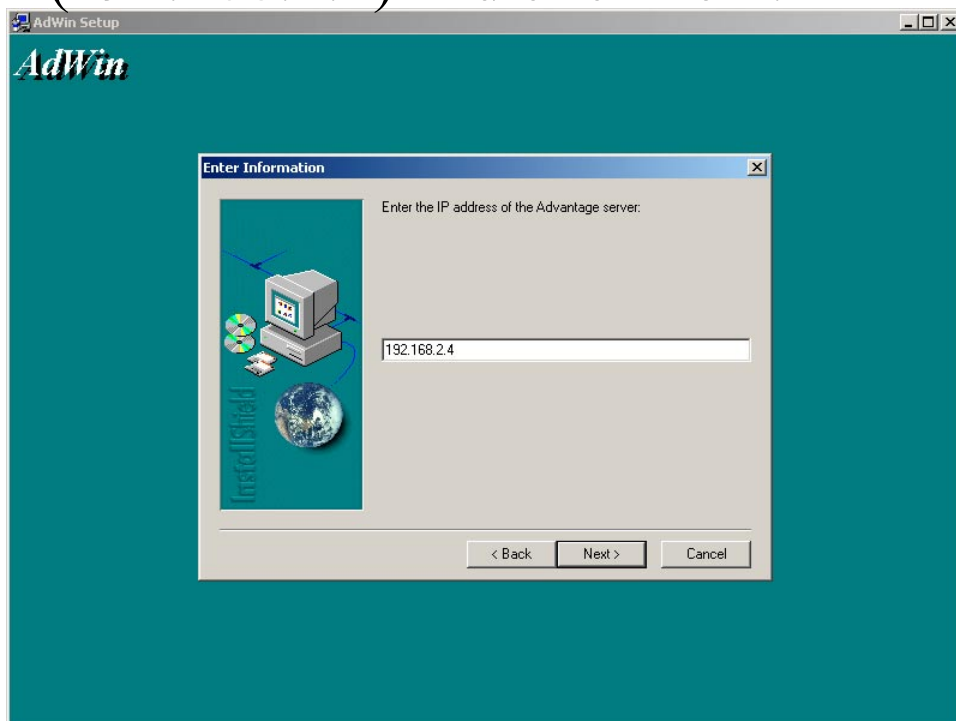


Installing Adwin on an Advantage PC

6. Click Yes When asked if you wish to install Adwin.

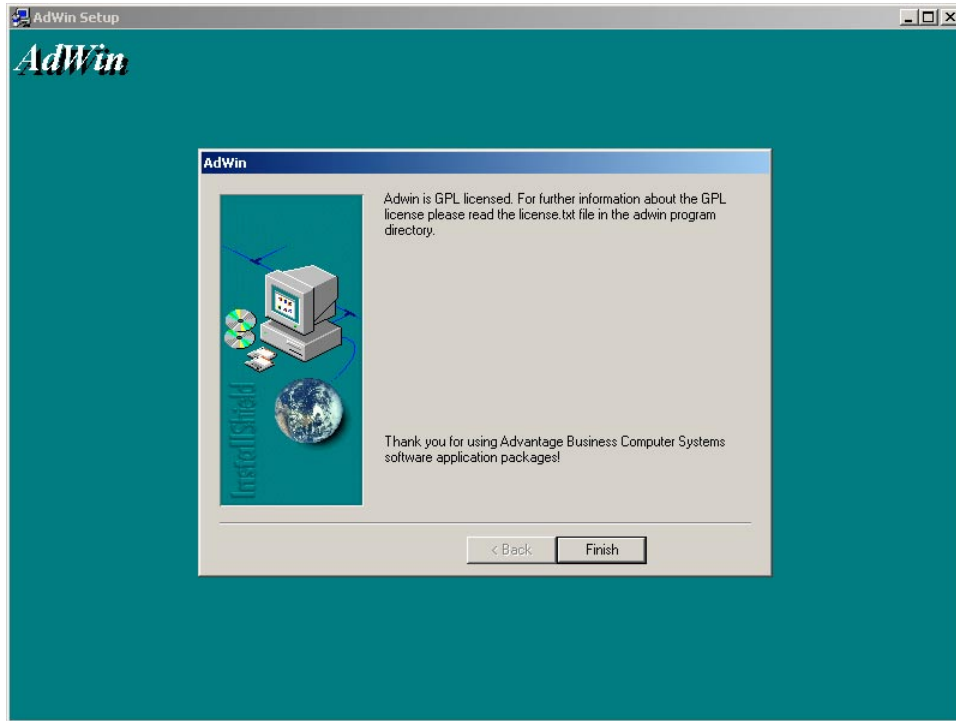


7. Enter the ip address of the New Support Server (192.168.2.4) and click next.

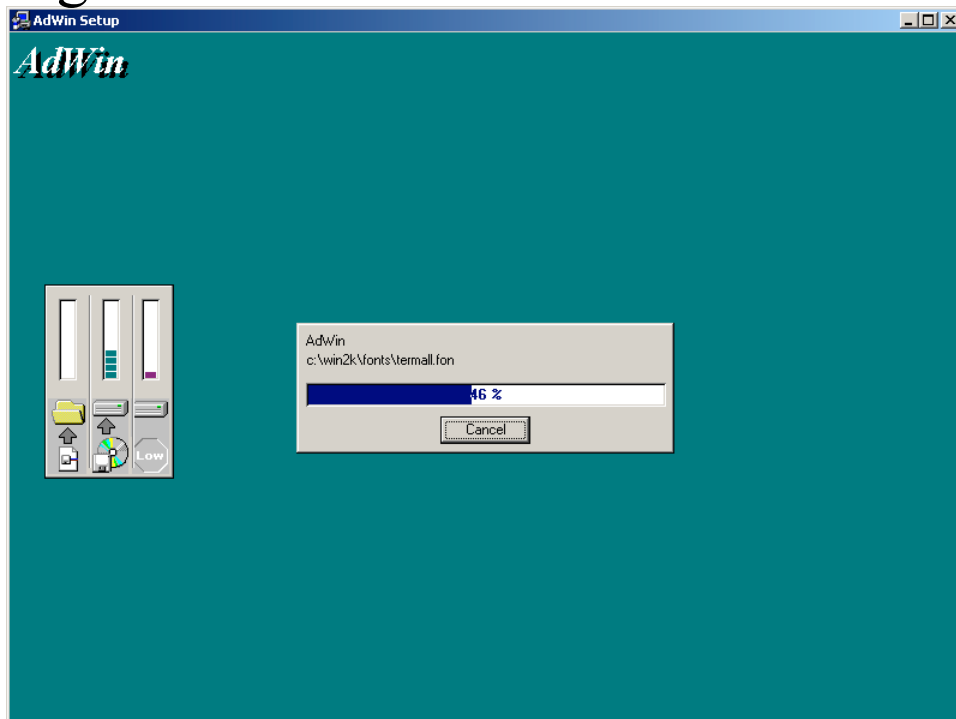


Installing Adwin on an Advantage PC

8. Click Finish on the window that informs you that Adwin is GPL licensed

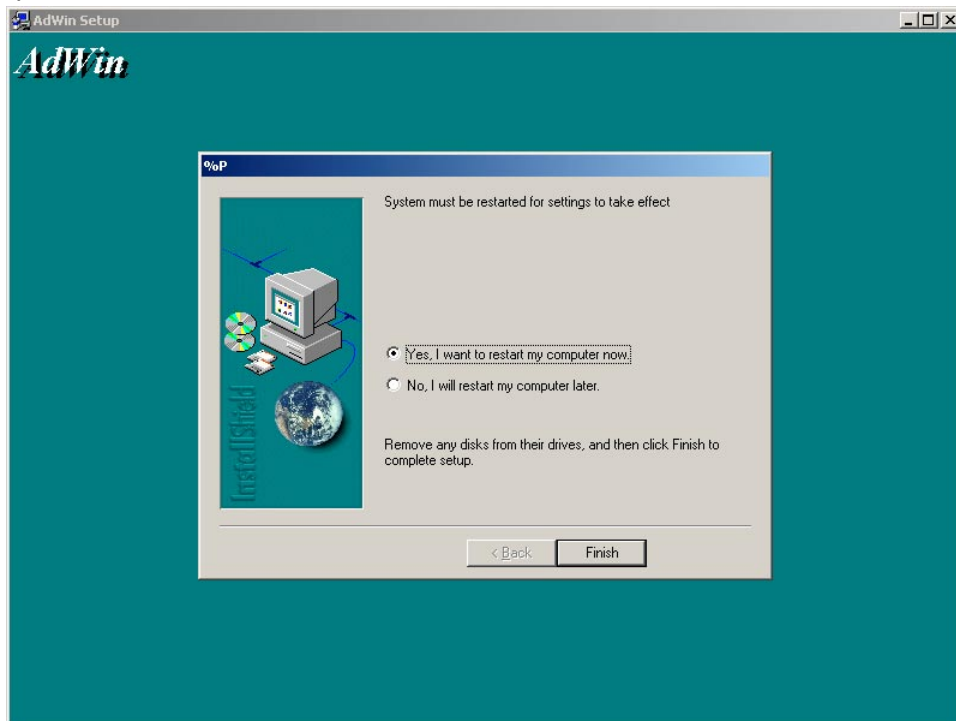


9. Allow Adwin to finish loading. Do not do anything while Adwin loads.



Installing Adwin on an Advantage PC

10. Once Adwin finishes loading, choose yes, I want to restart my computer now and click finish.



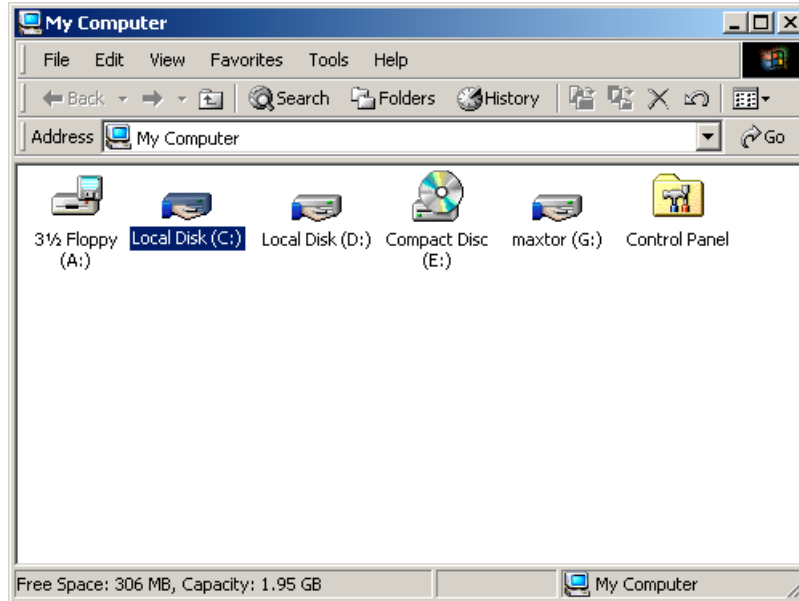
11. Allow the PC to restart, then log back into windows.

12. Double click the my computer Icon.



Installing Adwin on an Advantage PC

13. Double click on the local disk (C:) Icon.



11. Allow the PC to restart, then log back into windows.

12. Double click the my computer Icon.

