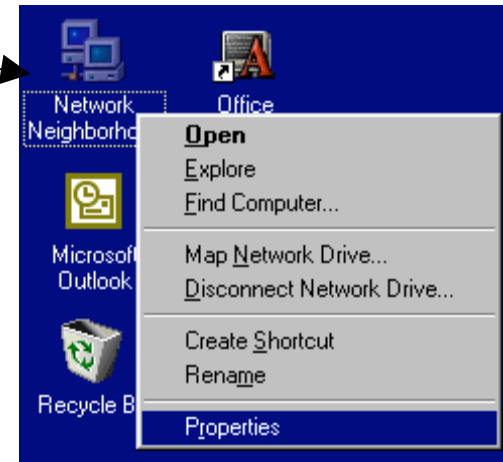
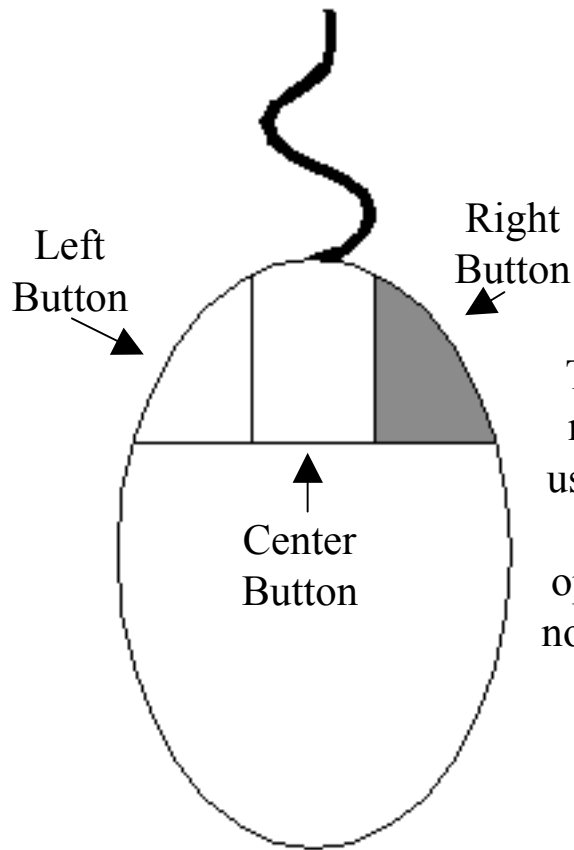


1. Right click on the network neighbourhood icon. This should bring up a menu

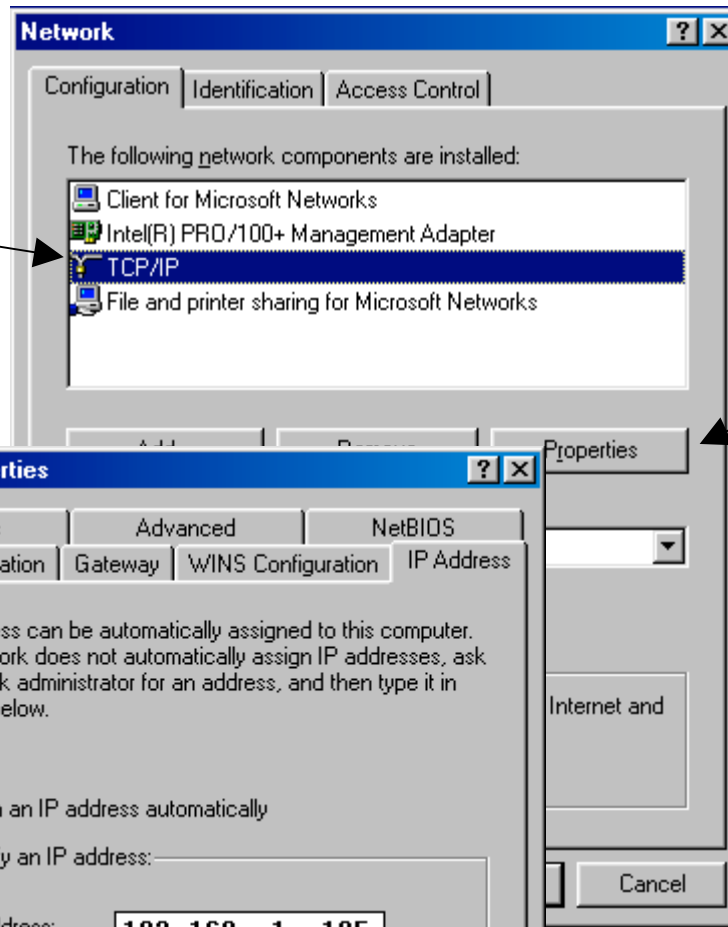


2. Left Click on Properties in this menu



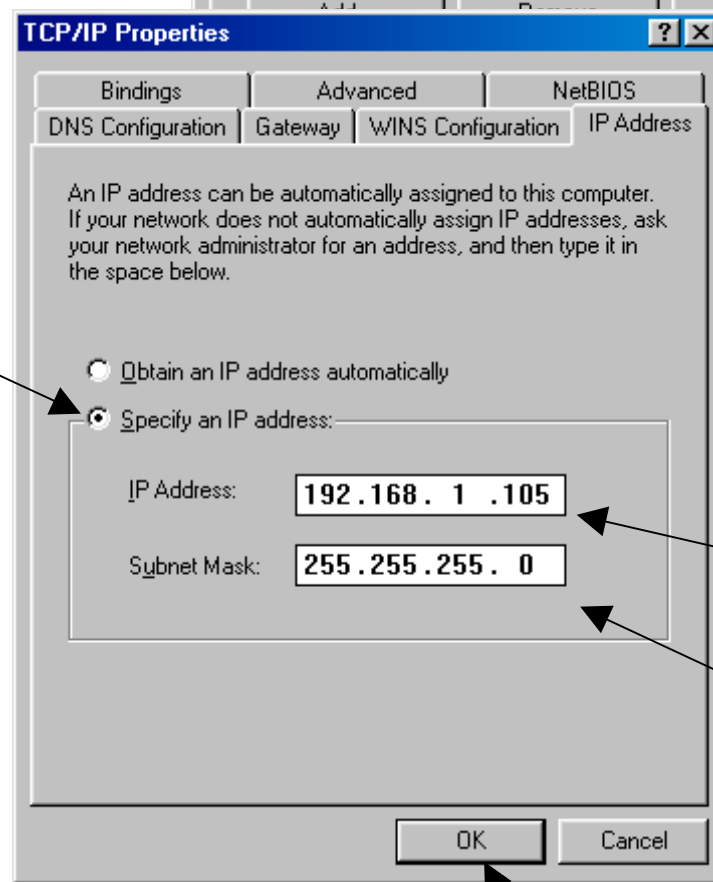
To right click on the network neighbourhood icon you will use the button the the right side of the mouse. This is on the opposite side of the button you normally use to open a window.

3. Left Click on TCP/IP. If you have more than one TCP/IP listed here, choose the one that has the name of the network card on it. **Do not** choose the one that says dialup adapter.



4. Click Properties to bring up the TCP/IP Properties Dialogue Box.

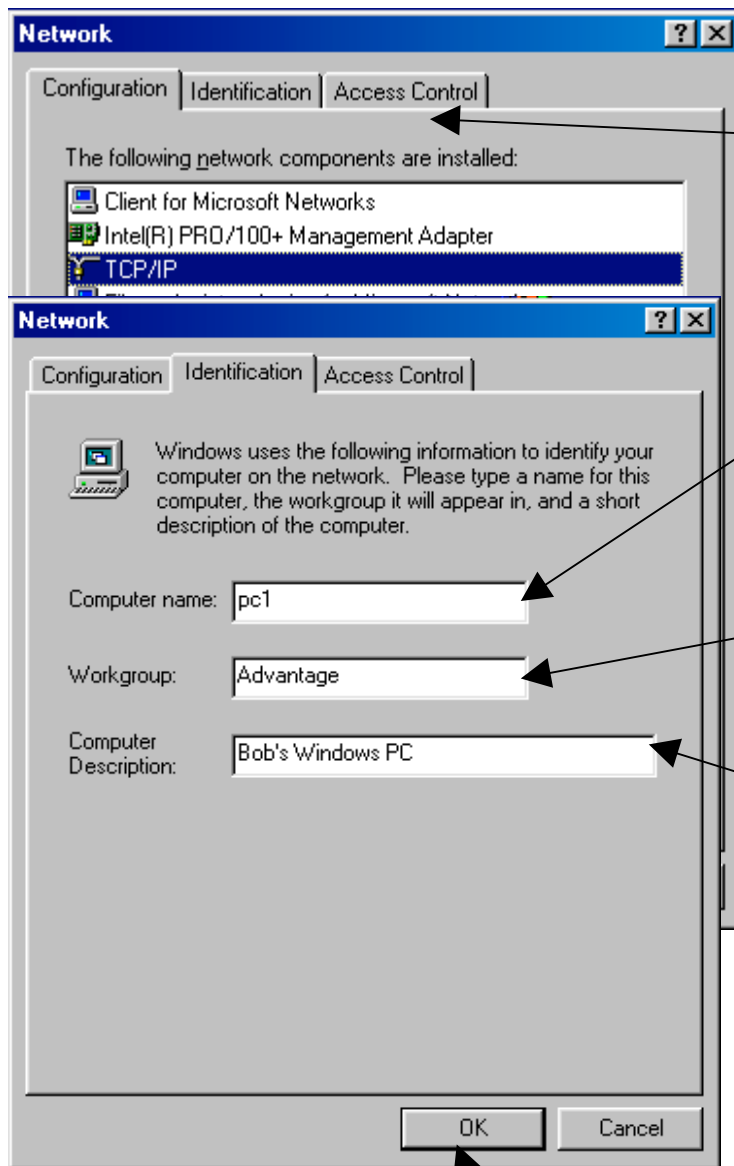
5. Click Specify an IP address



6. Enter the IP address you entered in the host table for this pc

7. Enter 255.255.255.0 on the field for subnet mask.

8. Click the OK button and the TCP/IP Properties window should disappear.



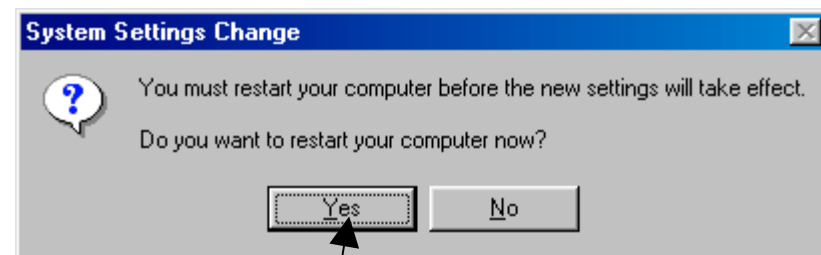
9. Click on the Identification tab.

10. Enter the name of the pc here just as you entered it in the /etc/hosts file.

11. Enter the name of your workgroup here. If you do not know the name of your workgroup, you will need to use the workgroup Advantage.

12. Enter a short description of the pc here.

13. Click OK. This should close the Network Window



14. When asked if you want to restart your computer now, click yes. The windows pc will then begin rebooting.