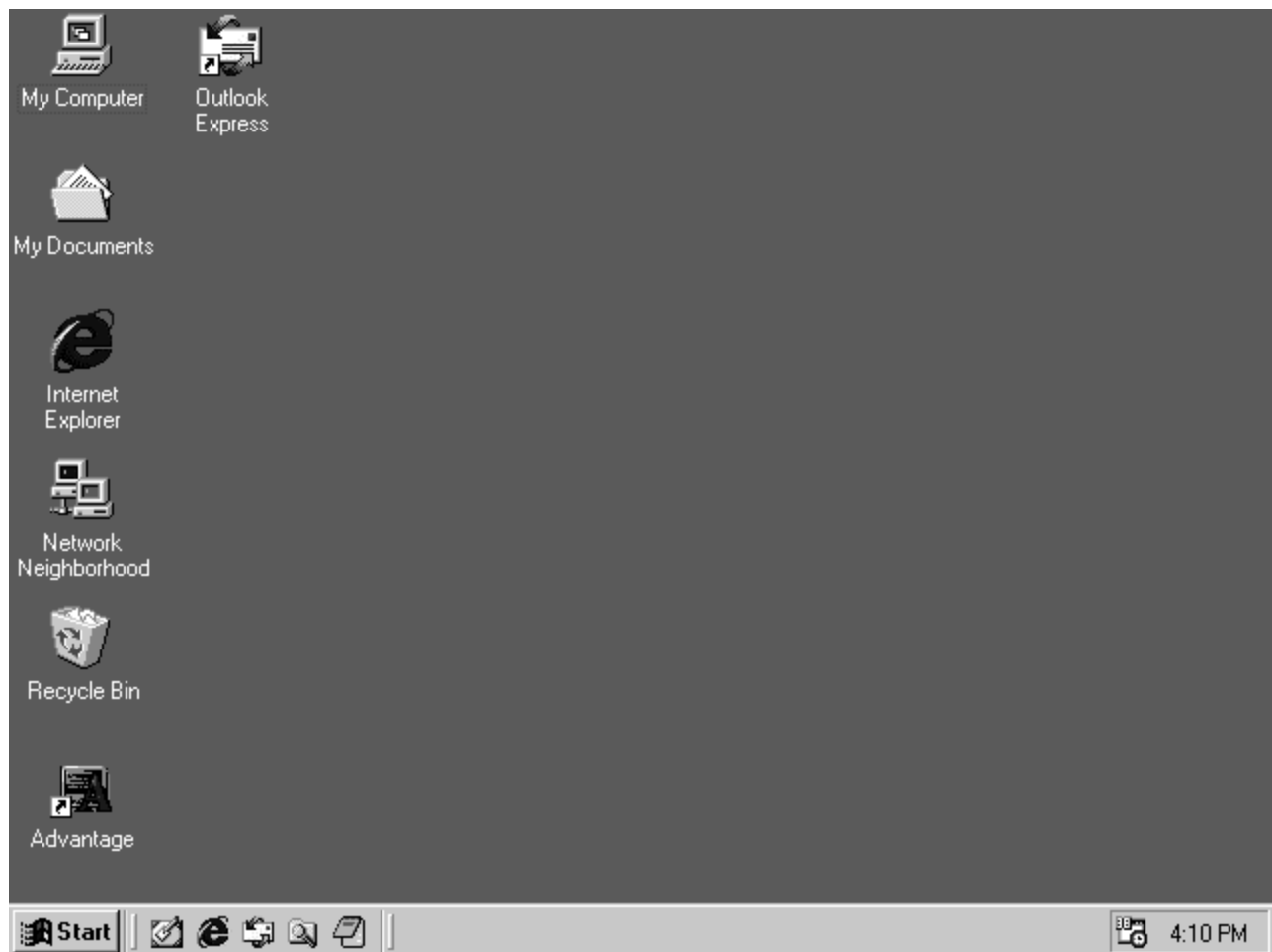


# Setting up a SMB/Windows Printers to be used with the Advantage Software

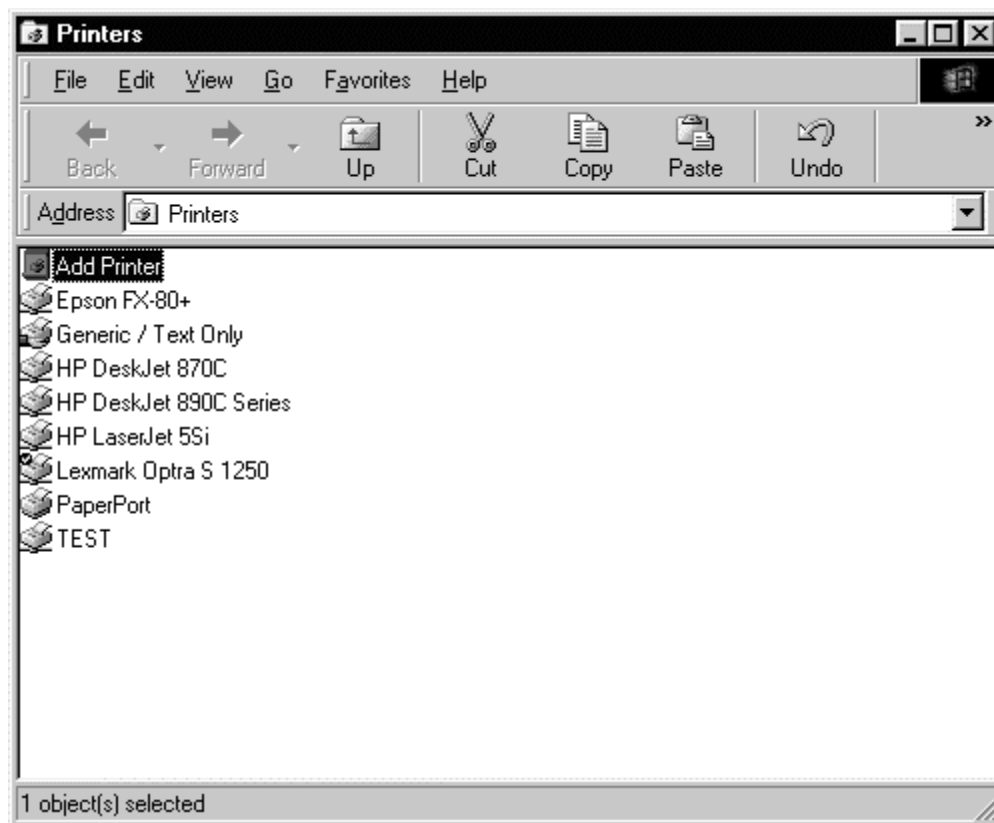
Certain things need to be set up before you can print from the Advantage software to a printer attached to a Windows PC. The first thing that needs to be done is to add the printer to the Windows machine.



Double click on the “My Computer” icon (shown in the upper-left corner of the screen).



When you see this window, double click on the “Printers” item to bring up the Printers window.



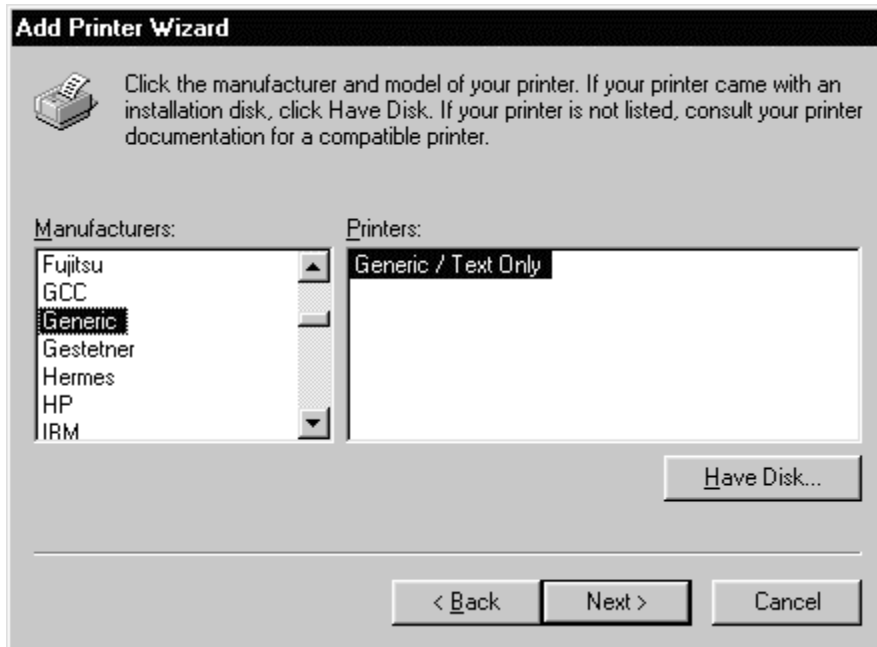
Double click on the “Add Printer” item from the Printers window to add the new printer.



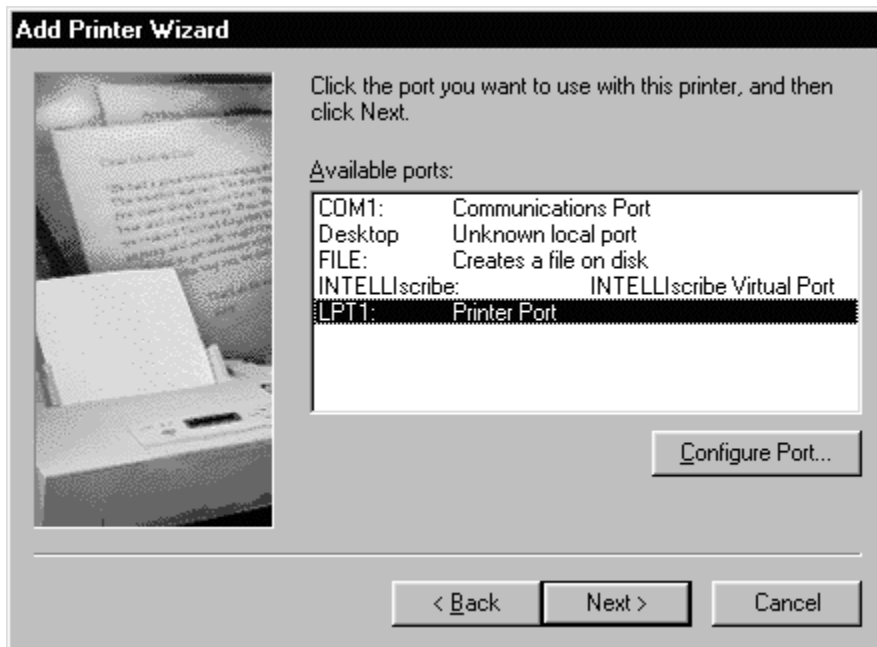
Click Next to continue...



Click on "Local Printer" and then click Next...

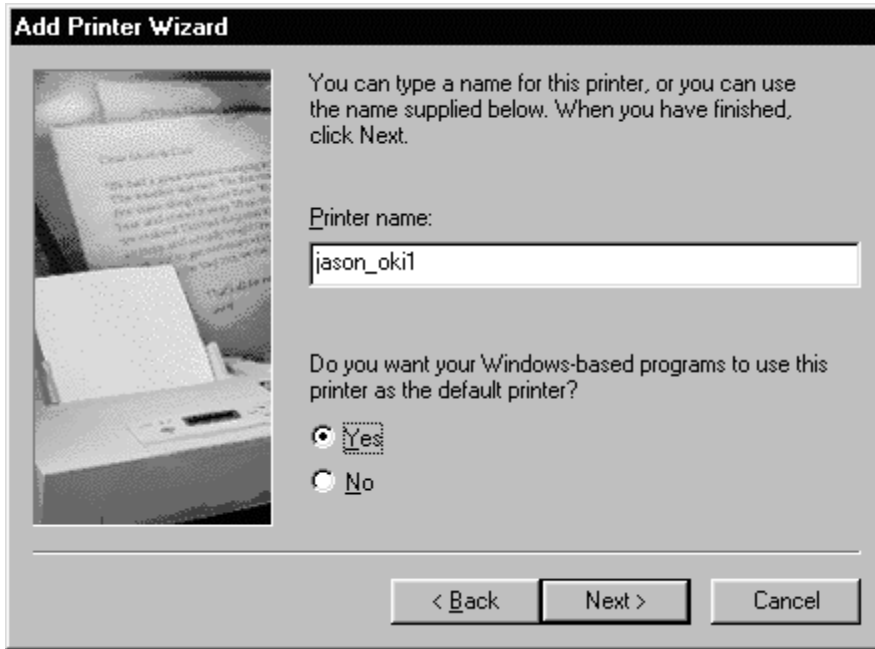


When this window appears, scroll down on the left side of the window and choose "Generic." Then pick "Generic/Text Only" on the right so that your window looks like this. Click Next...



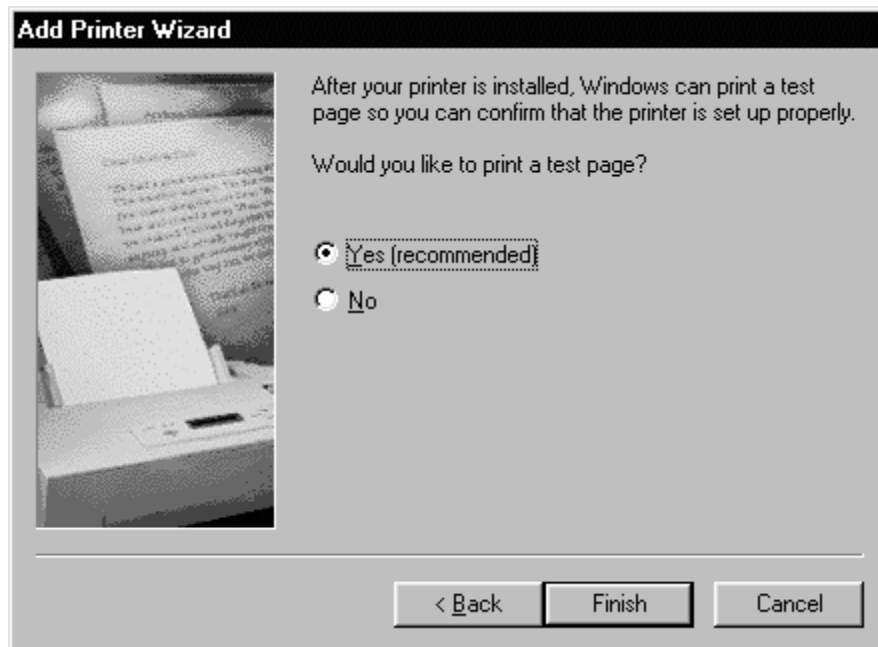
Choose LPT1 like shown in most cases, or COM# if you know the printer is connected to the serial port.

Click Next to continue...



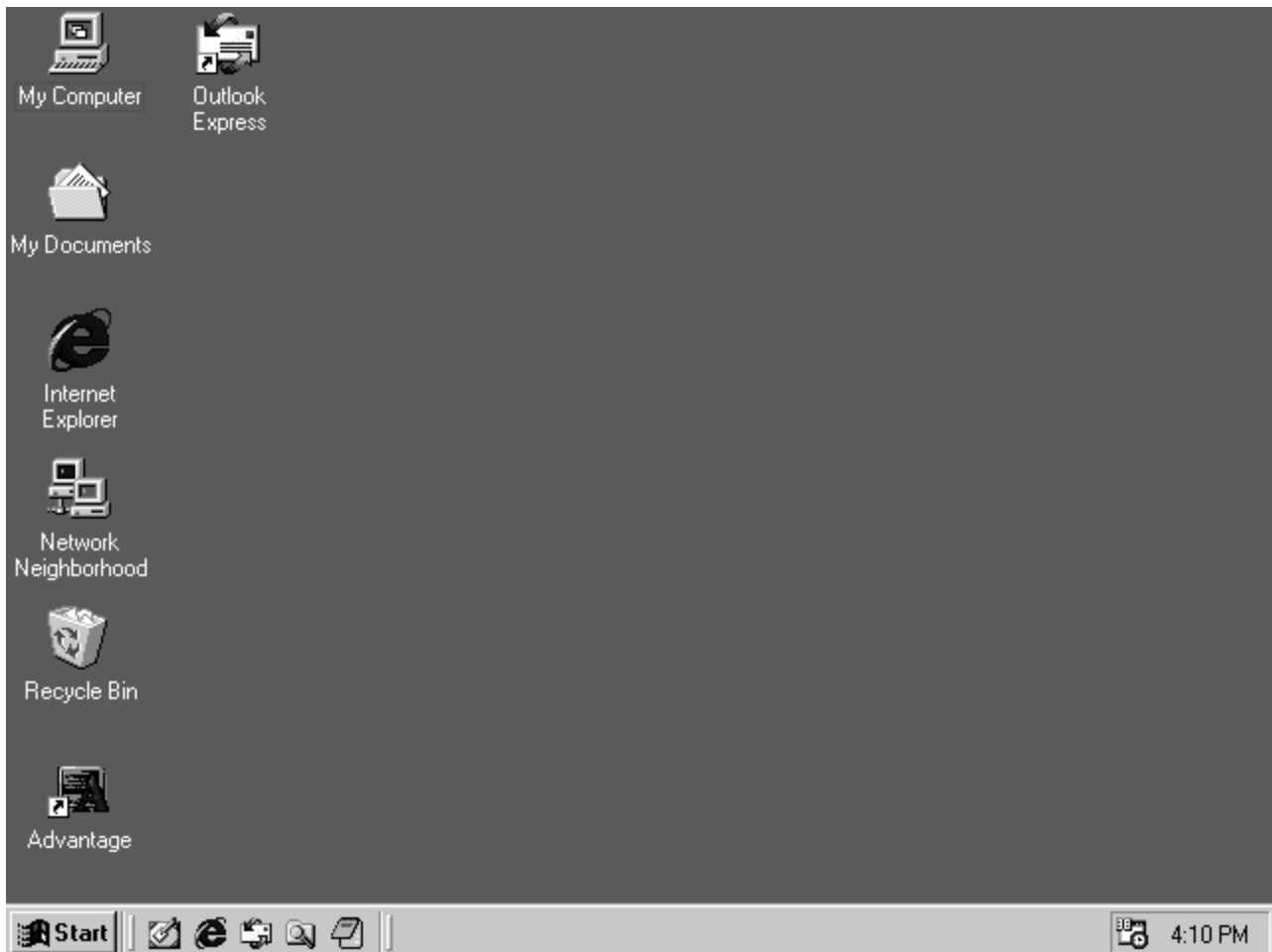
Make up a name for the printer and type it into the box in this window. Do not use spaces or special symbols in the name.

The other option will not affect printing from Advantage. Click Next to continue...

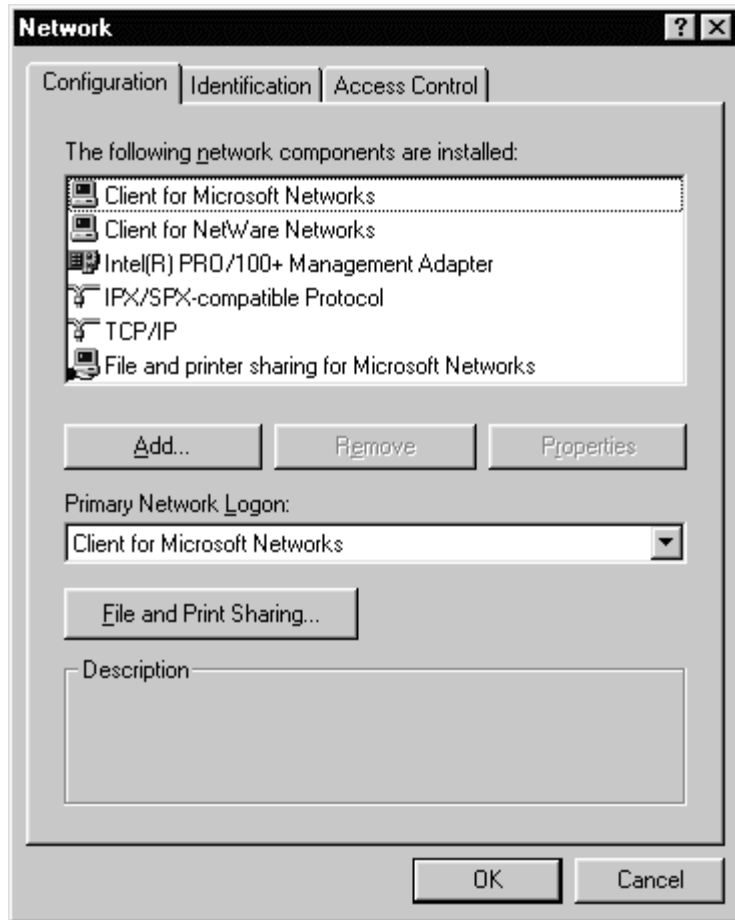


Click Finish to install the printer and print the test page. If the test page does not print after you click finish then the printer was not installed properly or the printer is not turned on or connected properly.

Close or minimize all remaining windows at this point so that the desktop is visible.



Move your mouse over the Network Neighborhood icon and click the right mouse button once. Choose “Properties” with the left mouse button on the menu that appears. A new window will appear.

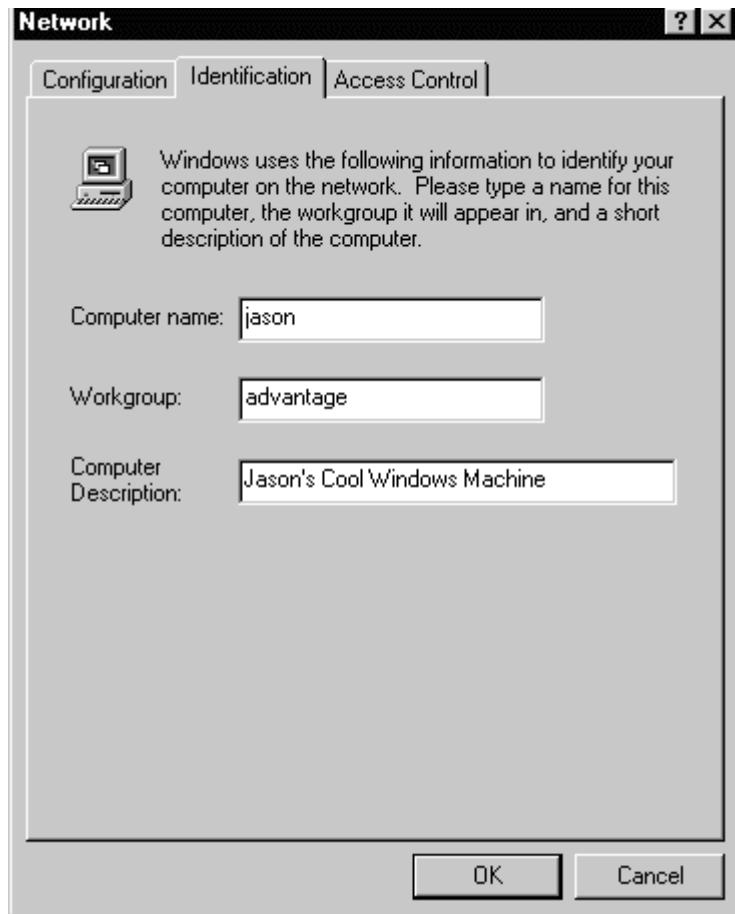


From this window click on the button labeled “File and Print Sharing.”



Check the box to allow others to print to your printers and click OK.

From the Network window again, click on the tab near the top of the screen labeled “Identification.”

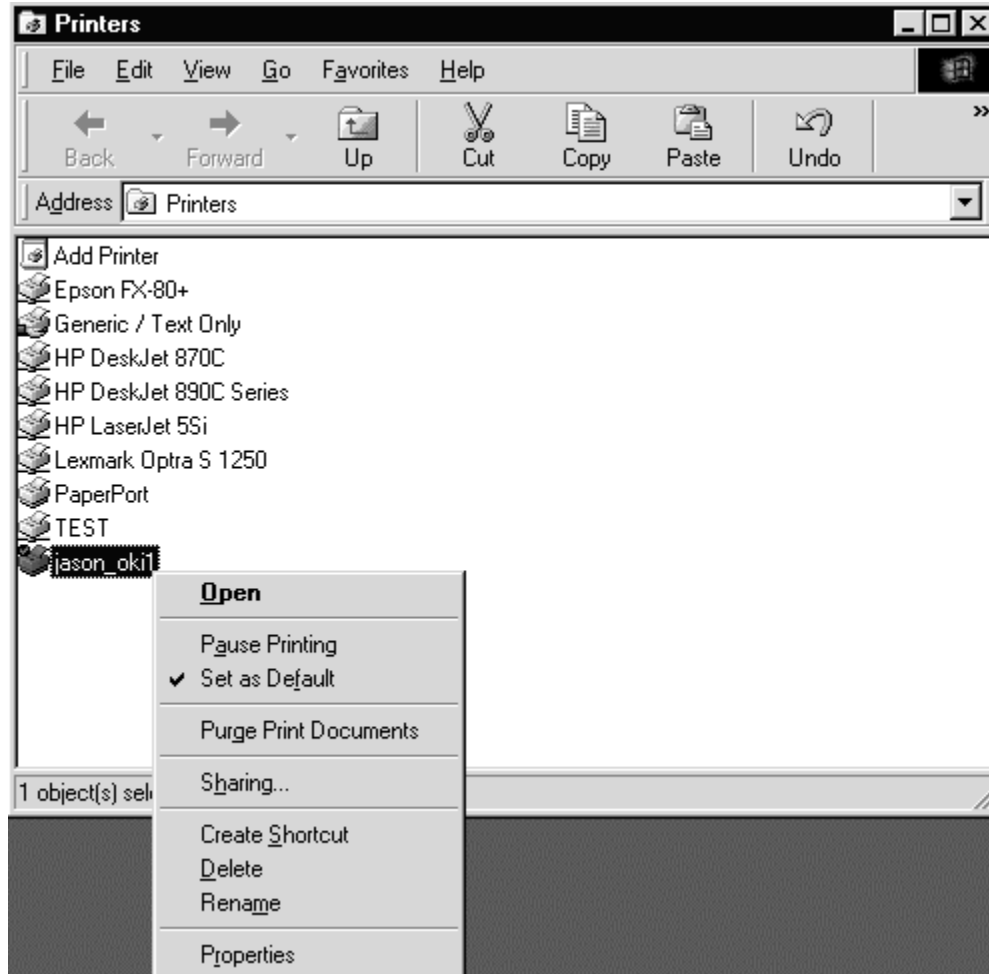


Make sure that these entries have something in them. If these fields are blank when you open this window then the computer has not been set up properly for networking...Stop and ask for help.

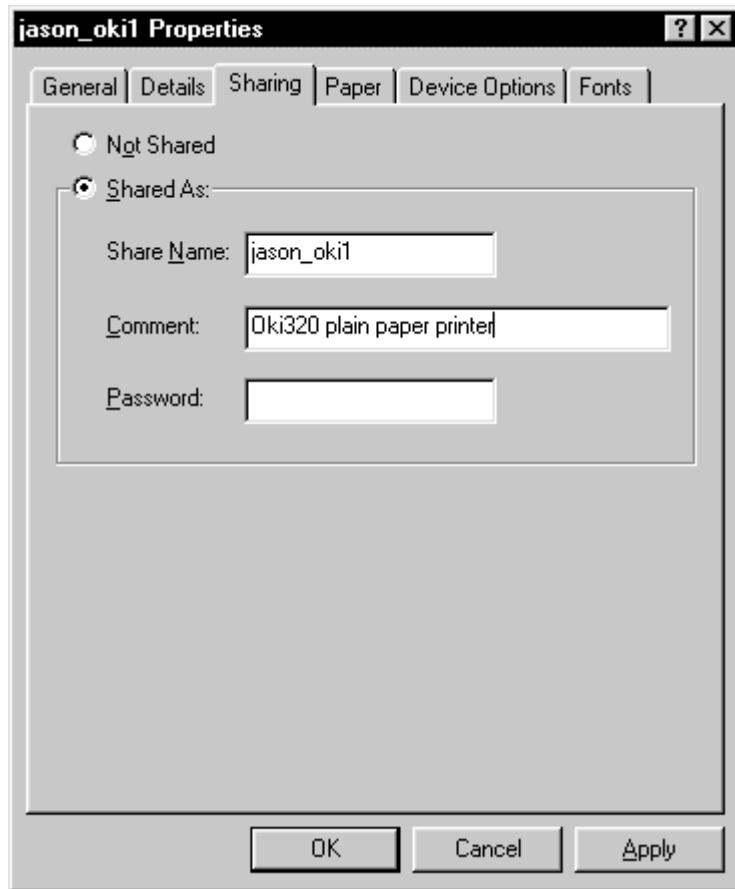
Click the OK button at the bottom of the window to accept the changes and exit.

Windows will tell you to reboot your machine. Let it do so now and wait for it to come back up.

Bring up the Printers window again by double clicking on “My Computer” and selecting Printers. Refer back to the beginning of the document if you don’t remember how to get there.

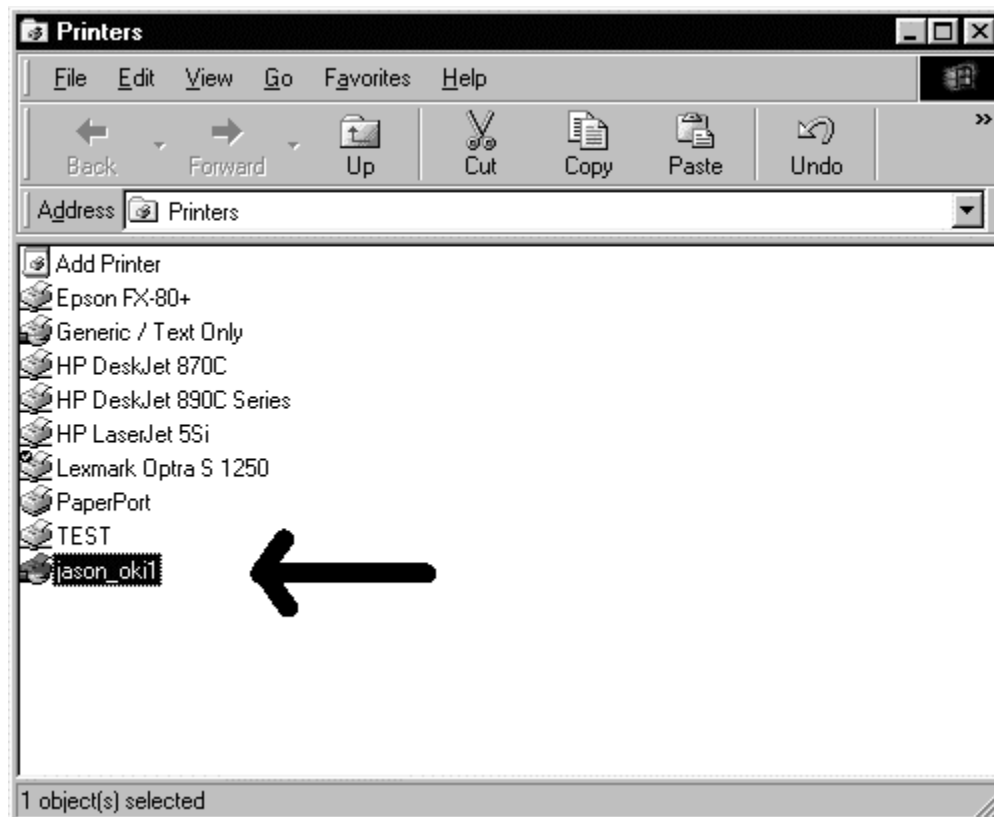


From the Printers window click the right mouse button over the printer that you just created. Select the “Sharing” item from the menu (as shown above).



Click on the “Shared As” item. Enter the name of the printer in the Share Name box but don’t use spaces or special symbols. You can also enter any comment you wish. Leave the password box blank.

Click on Apply and then OK to accept the changes and exit.



You should now see a small hand under the icon for the printer.

For the rest of the installation you should be at the SCO server. At the login type root and enter the root password at the password prompt. When you see the “#” prompt type the command “swinstall.”

```
swinstall v2.1e      Software package installation utility
Searching for third party package/version information...done

Item Package          Version  Item Package          Version
-----
 1) 497c                497c    17) maxpeed           211a
 2) abcsinst           10      18) maxstation        270
 3) configs            1       19) nlink             61905
 4) dialupinst        1       20) mngr              40001
 5) digifax           290a    21) mngr5             50001
 6) digifax           290a_auto 22) mpi               321
 7) digifax           290a_jet 23) mpi322           322
 8) doublevision      2000    24) mpi400           400
 9) etherlite         1.004   25) norand            1
10) facetterm         341     26) powerchute       101
11) facetwin          1       27) randisk           1
12) facetwin3         1       28) sco/rs           505a
13) fenix             31      29) sco2000          600
14) hcptest           100a2   30) servistar        10a
15) icverify          700     31) tcs-server       2.0
16) lptutils          1.0
```

Package to install (d)esc/1-31/package [version]/0: none): █

On your screen you should see a package called “lptutils.” Type in the number corresponding to this package to install it on the system. If the package does not appear on your screen please stop and contact technical support. In the example screen above we would type “16” and press the enter key to install it.

After installation, you will be returned to a command prompt. Type “sysut” to bring up the System Utilities menu. Pick “Printer” and then “Software Printer Maintenance.” Press the Insert key to insert a new printer into the system. A box will appear on your screen.

```
Printer Id code.....: jason_oki320
Description.....: Oki 320 on Jason's Win PC
Location.....: jason
[L]ocal/[R]emote/[T]ransparent: L
Printer type ([F7] for query): dumbansi
Forms class.....: plnpaper
Device, file or |SpoolCommand.: |smbprint jason jason_oki1 >/dev/null 2>&1
Command to execute before open:
Command to execute after close:
```

- Printer Id code: The name of the printer
- Description: The comment you want to appear with the printer
- Location: The name of the PC it is connected to
- [L]ocal/[R]emote/[T]ransparent: L
- Printer type ([F7] for query): dumbansi
- Forms class: plnpaper (or the form type you are using)

Copy the Device, file or |SpoolCommand exactly as you see it above. Substitute “jason” for the name of the PC as it appears in the host table. Substitute “jason\_oki1” for the name you gave to the printer in the “Shared As:” field in the Windows section of this document (page 10).

The host table looks like this:

```
[F1]-Help [F2]-Menu tel14449hosts L000138 C000001 I
.te v1.36/960531 /work3/home/davea/ 09/08/2000
|-----|
|-----|
207.66.23.132 hacienda
168.234.139.240 casaprem
216.132.142.140 edbaldridge
216.132.142.199 herb1 #debs#
216.132.142.145 lp10
216.132.142.77 winterm
216.132.142.64 judy
216.132.142.192 winterm
216.132.142.197 symbol
216.132.142.3 abcssup abcssup.abcsinc.com
208.217.106.26 dialin
216.132.142.196 hardwar10 hardwar10.abcsinc.com
208.149.70.14 alexander
216.132.142.65 apdesk
216.132.142.230 dlink1
216.132.142.232 dlink2
216.132.142.228 edbrn
216.132.142.207 herb2 #homebmt#
216.132.142.28 janet
216.132.142.58 frontdesk
|-----|
|-----|
231 |-----| Text Editor Copyright (c) 1996 RBC Enterprises / Ronald B. Cemer |-----|
```

*Please be careful to make sure that the spool command is exactly like shown in the example with the noted exceptions and that the “pcname” and “printername” are exactly the same in both the Windows machine and the Advantage software. These names are case-sensitive (ie. Bob is not the same as bob).*

After the information is entered you may press the “Insert” key to save the information and then press the F10 key to save the new printer configurations. The printer can now be printed to from the Advantage software! Hold down the Shift key and press the F1 key simultaneously to send a screen print and select the new printer to test it.

**NOTE:** the example we have shown you is a fully functional shared printer. If you set your printer precisely the same way, your printer should work.