

The next step will be to edit the Termdevs.cfg file on the Main Unix Server (ABCS). Do so by logging into the server as root to the prompt.

```

/etc
scosysv:p0_# cd /work/configs
/work/configs
scosysv:p0_# nte termdevs.cfg

```

6. Once in the File. Go to next line below the last entry.

```

[F1]-Help [F2]-Menu te2299termdevs.cfg L000049 C000001 I
.te v1.36/960531 / 09/16/2001
tcs103_net1.2
tcs103_net1.3
tcs103_net1.4
tcs103_net1.5
tcs103_net1.6
tcs103_net1.7
tcs103_net1.8
tcs104_net1.1
tcs104_net1.2
tcs104_net1.3
tcs104_net1.4
tcs104_net1.5
tcs104_net1.6
tcs104_net1.7
tcs104_net1.8

```

7. Now edit the file in such a way that you have the amount of screens that you want. In our example, we are setting up “8”.

```

[F1]-Help [F2]-Menu te2299termdevs.cfg L000256 C000006 I
.te v1.36/960531 / 09/16/2001
tcs103_net1.4
tcs103_net1.5
tcs103_net1.6
tcs103_net1.7
tcs103_net1.8
tcs104_net1.1
tcs104_net1.2
tcs104_net1.3
tcs104_net1.4
tcs104_net1.5
tcs104_net1.6
tcs104_net1.7
tcs104_net1.8
pc1.1
pc1.2
pc1.3
pc1.4
pc1.5
pc1.6
pc1.7
pc1.8

```

8. Now hit the F-2 Button to “Save/Exit”

```

[F1]-Help [F2]-Menu te2299termdevs.cfg L000256 C000006 I
.te v1.36/960531 / 09/16/2001
tcs103_net1.4
tcs103_net1.5
tcs103_net1.6
tcs103_net1.7
tcs103_net1.8
tcs104_net1.1
tcs104_net1.2
tcs104_net1.3
tcs104_net1.4
tcs104_net1.5
tcs104_net1.6
tcs104_net1.7
tcs104_net1.8
pc1.3
pc1.4
pc1.5
pc1.6
pc1.7
pc1.8

```

Commands:			
S	Save/resume	Mark position	Read block
X	Save/exit	Go to mark	Write block
A	Abandon/exit	Block beginning	Untab block
g	Top of scrn	Block end	Retab block
g	End of scrn	Unmark block	Slide block
H	Top of file	Delete block	Large-file mode
E	End of file	Copy block	Erase to end
G	Go to line #	Move block	Find a string
			Find/replace
			F6-F10 Make macro
			Command shell
			Esc Redraw screen

Text Editor Copyright (c) 1996 RBC Enterprises / Ronald B. Cowe

9. Answer the following question with “Yes” to Save.

```

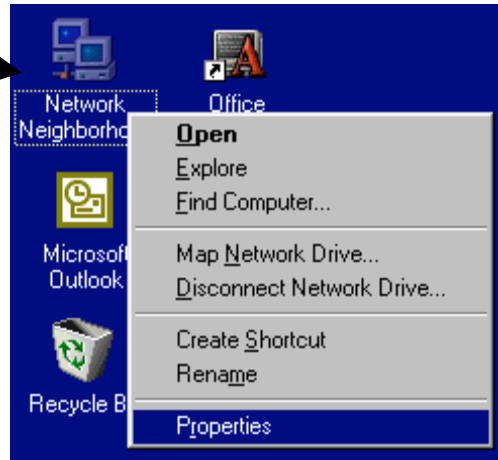
[F1]-Help [F2]-Menu te2299termdevs.cfg L000256 C000006 I
.te v1.36/960531 / 09/16/2001
tcs103_net1.4
tcs103_net1.5
tcs103_net1.6
tcs103_net1.7
tcs103_net1.8
tcs104_net1.1
tcs104_net1.2
tcs104
tcs104
tcs104
Do you want to save the changes to this file and exit (y/n)?
tcs104_net1.6
tcs104_net1.7
tcs104_net1.8
pc1.1
pc1.2
pc1.3
pc1.4
pc1.5
pc1.6
pc1.7
pc1.8

```

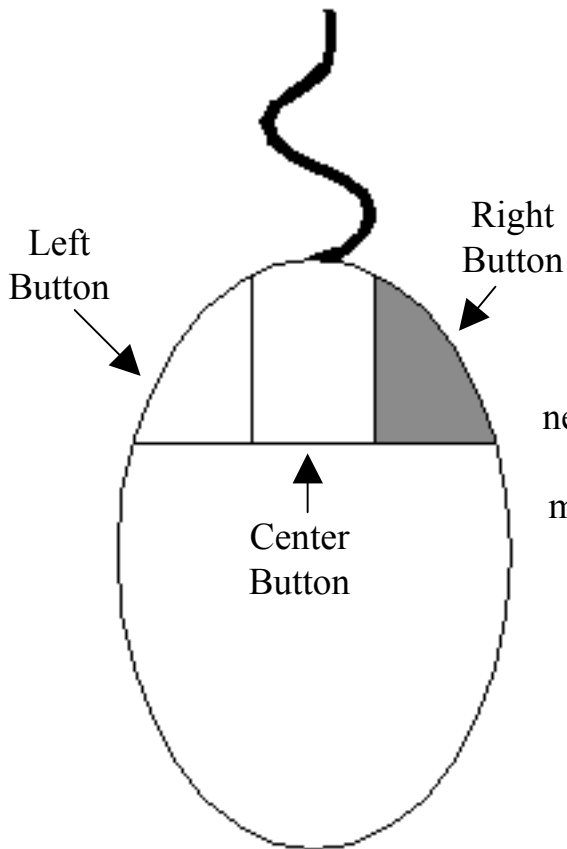
Text Editor Copyright (c) 1996 RBC Enterprises / Ronald B. Cowe

The Next Step Will Be To Setup Your PC With the Appropriate Network Settings

1. Right click on the network neighborhood Icon. This should bring up a menu

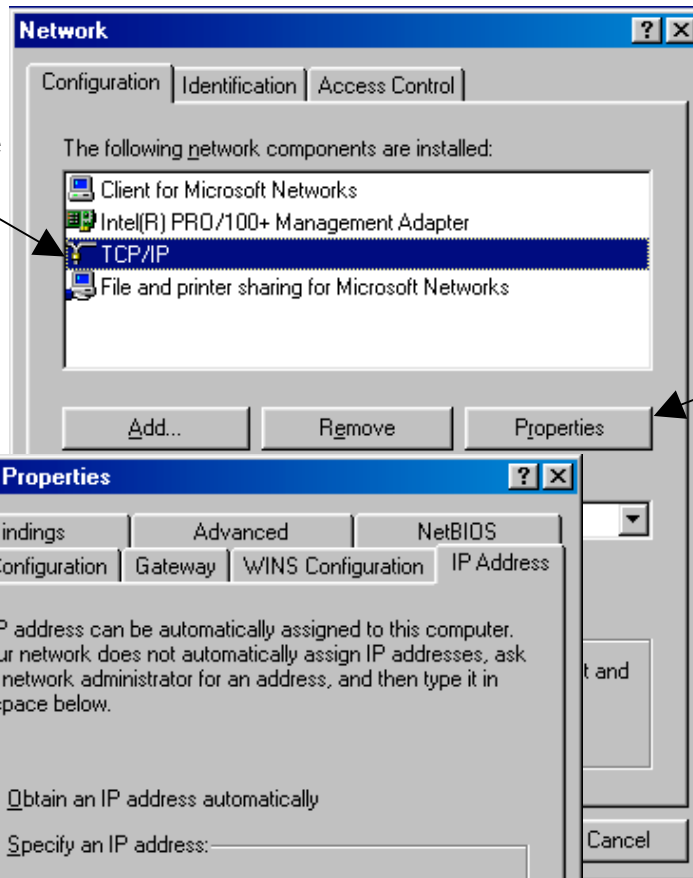


2. Left Click on Properties in this menu



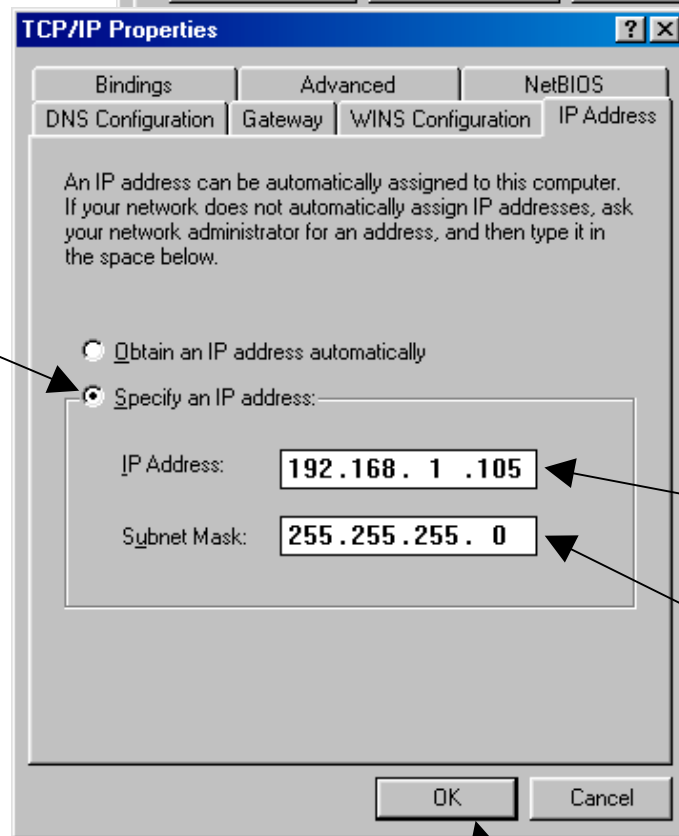
To right click on the network neighbourhood icon you will use the button the the right side of the mouse. This is on the opposite side of the button you normally use to open a window.

3. Left Click on TCP/IP. If you have more than one TCP/IP listed here, choose the one that has the name of the network card on it. **Do not** choose the one that says dialup adapter.



4. Click Properties to bring up the TCP/IP Properties Dialogue Box.

5. Click Specify an IP address

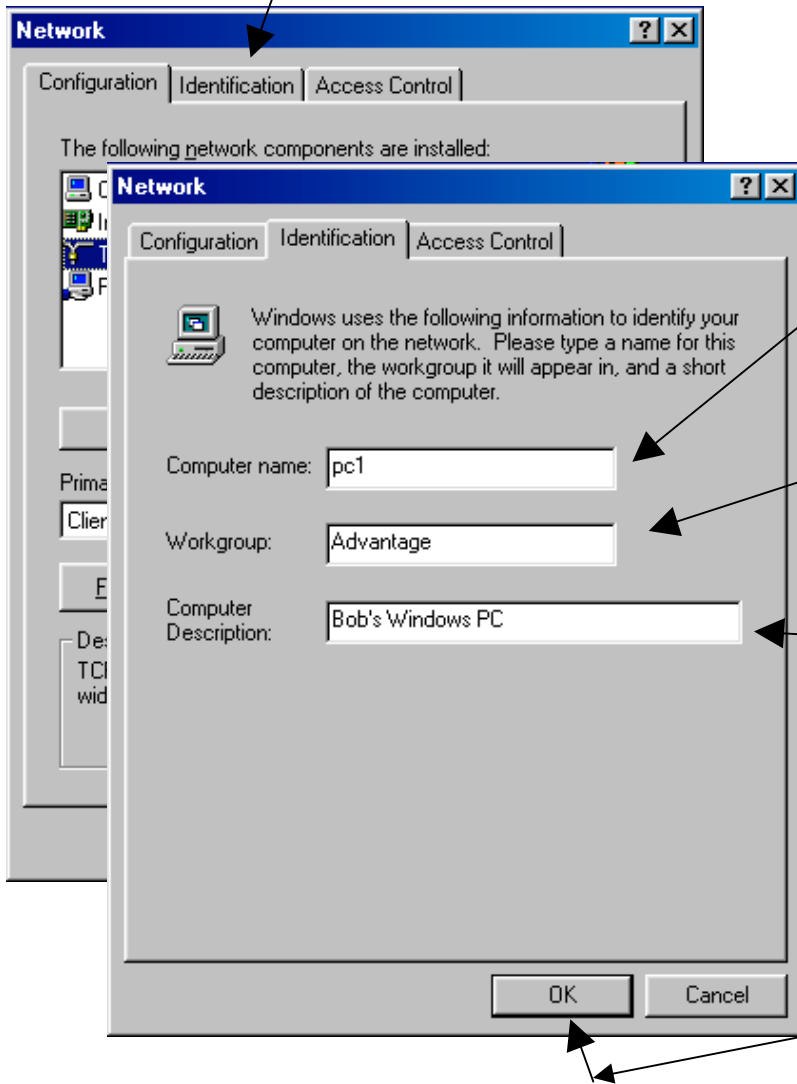


6. Enter the IP address you entered in the host table for this pc

7. Enter 255.255.255.0 on the field for subnet mask.

8. Click the OK button and the TCP/IP Properties window should disappear.

9. Click on the Identification tab.

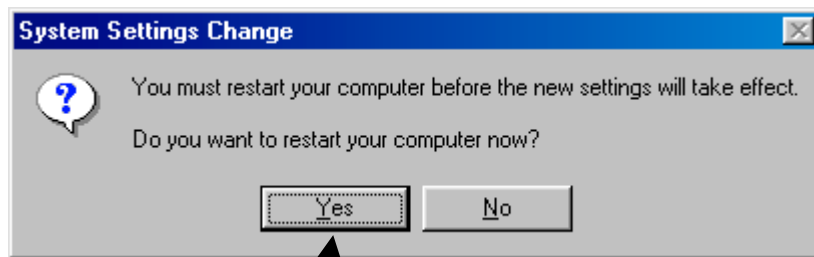


10. Enter the name of the pc here just as you entered it in the /etc/hosts file.

11. Enter the name of your workgroup here. If you do not know the name of your workgroup, you will need to use the workgroup Advantage.

12. Enter a short description of the pc here.

Click "OK" to close this Window.



14. When asked if you want to restart your computer now, click yes. The windows pc will then begin rebooting.