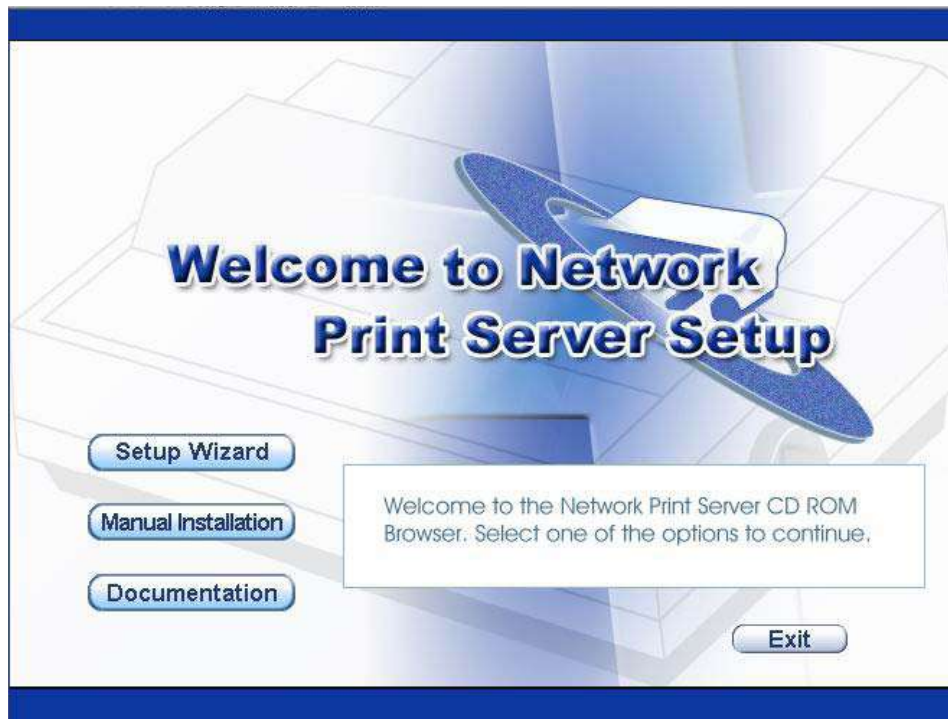


# Setting Up Wireless USB Print Server

## Installing the PSAdmin

To install PSAdmin, please follow the directions listed below.

1. Insert the **Setup CD** into your CD-ROM drive.
2. Run the **setup.exe** from Windows 95/98/Me/NT/2000/XP/2003. The **Network Print Monitor for Windows** welcome message then appears. Choose **Setup Wizard** or **Manual Installation**.



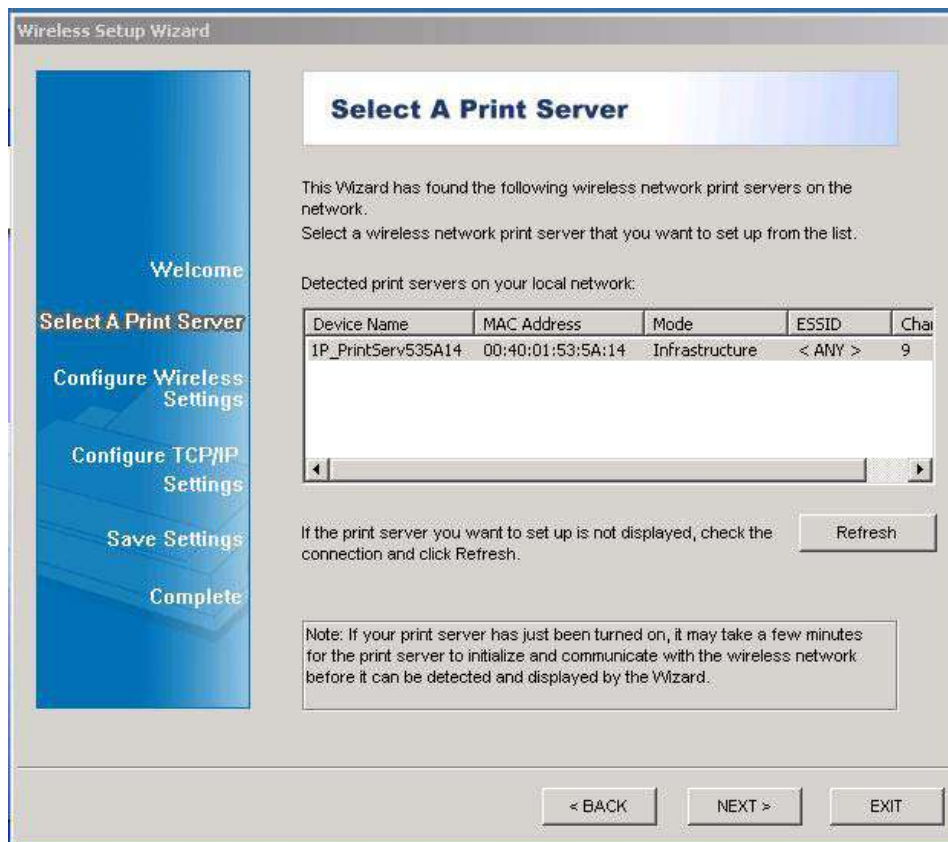
3. Choose Setup Wizard, the program will auto install the **Network Print Monitor**, **PSAdmin** and **Setup Wizard** into your computer. The default installation directory will be **C:\Program files\Network Print Monitor**.
4. After installation completes, the **Setup Wizard** message appears.



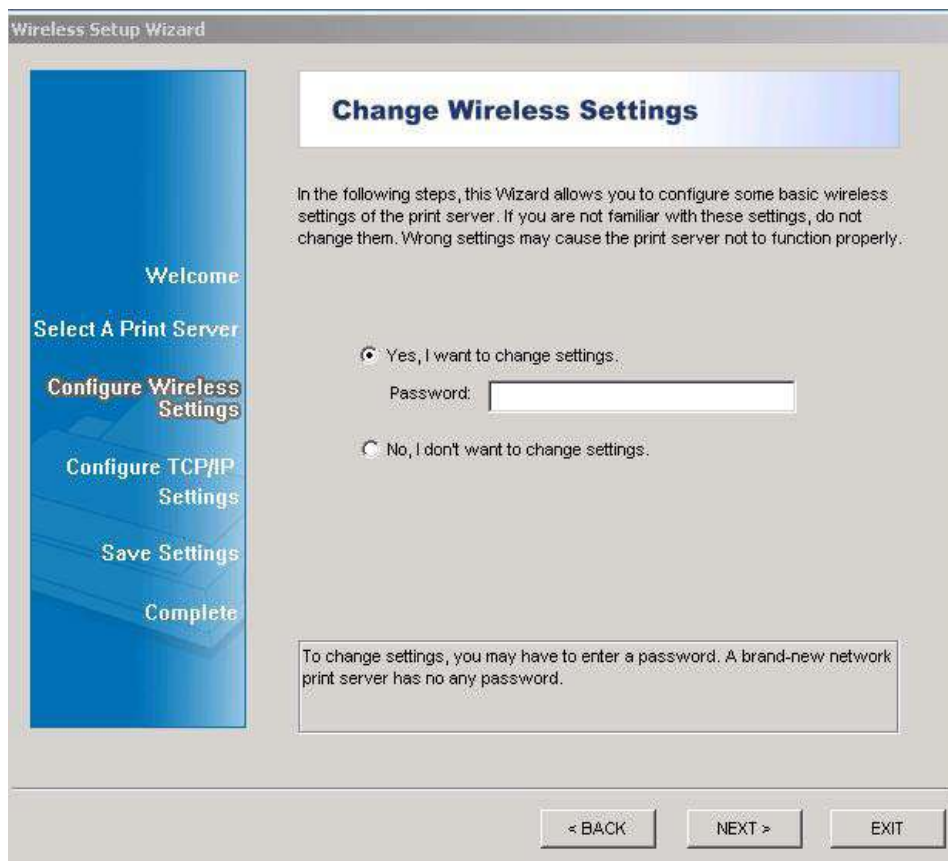
5. Click **Wireless Setup Wizard** and the following message appears.



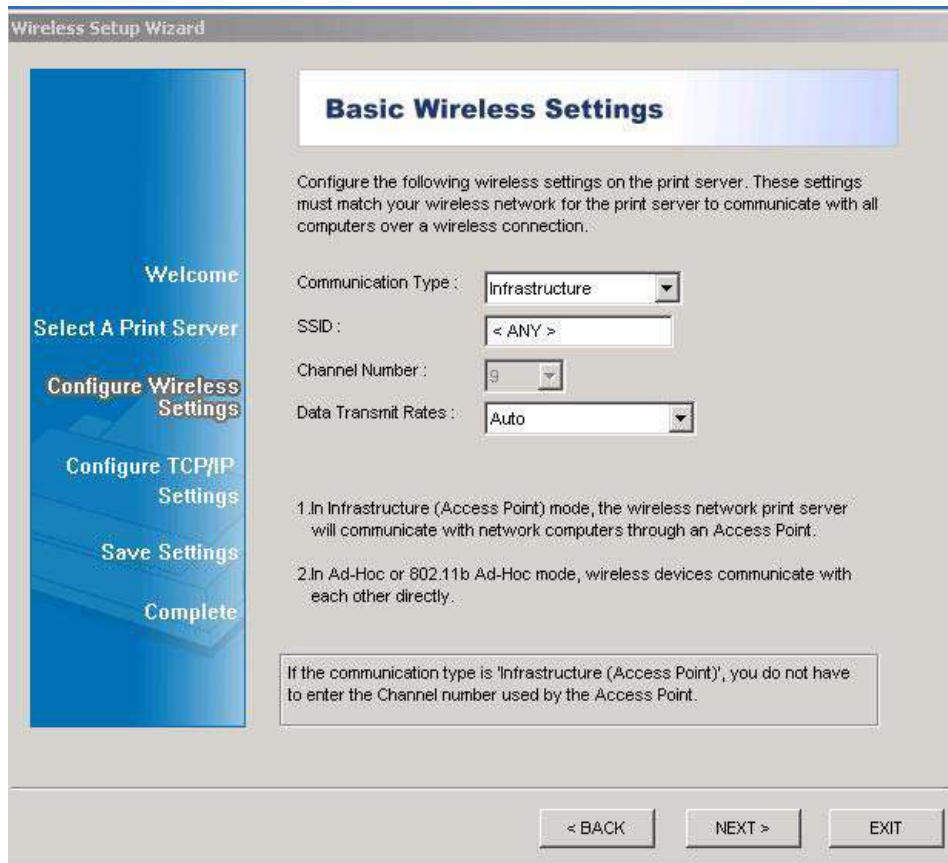
6. Click **NEXT** , the wizard will automatically discover the wireless print server.



7. Select the print server which you want to configure and press **NEXT**.



8. Select **YES** if you want to change the configuration and press **NEXT** then the picture appears.



**Communication Type** please choose **Infrastructure**, **Ad-hoc** or **802.11b Ad-hoc** that meet your network environment.

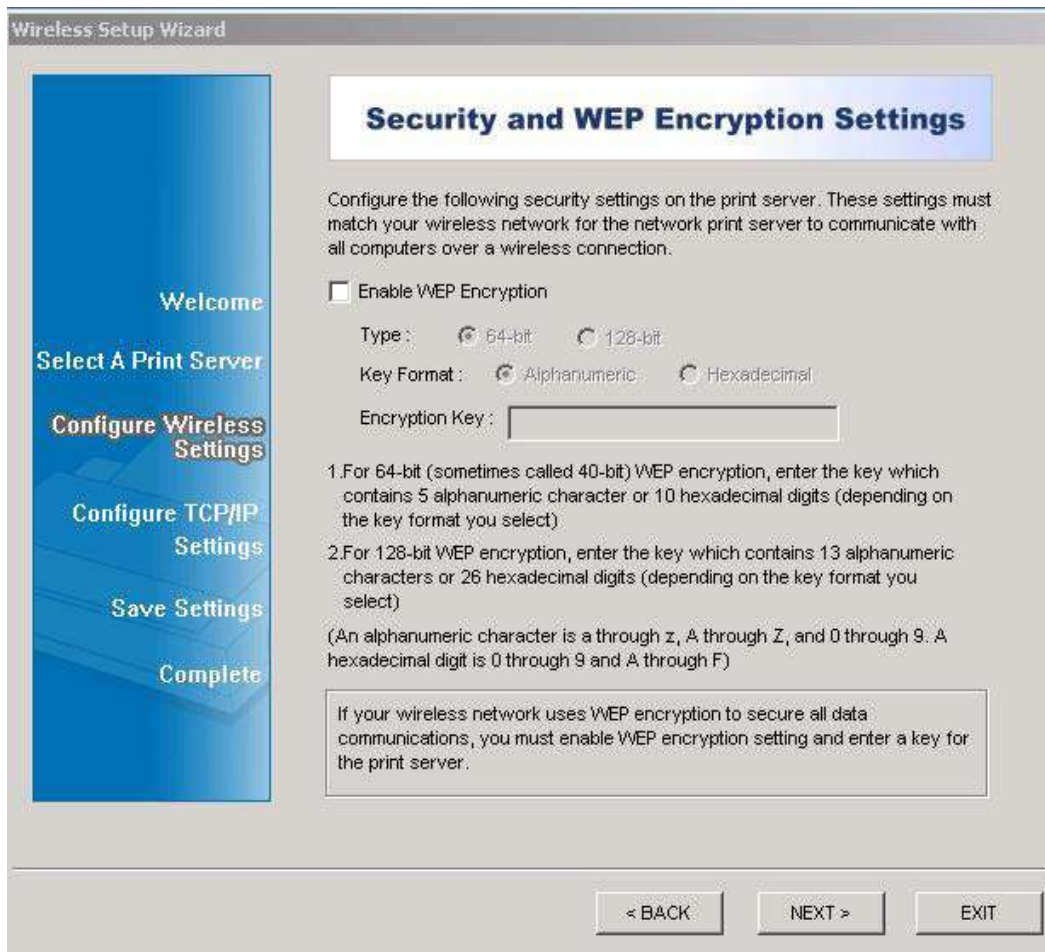
**SSID** Input the proper SSID of your wireless network. Check your wireless Access Point or another wireless device for this information.

**Channel** optional.

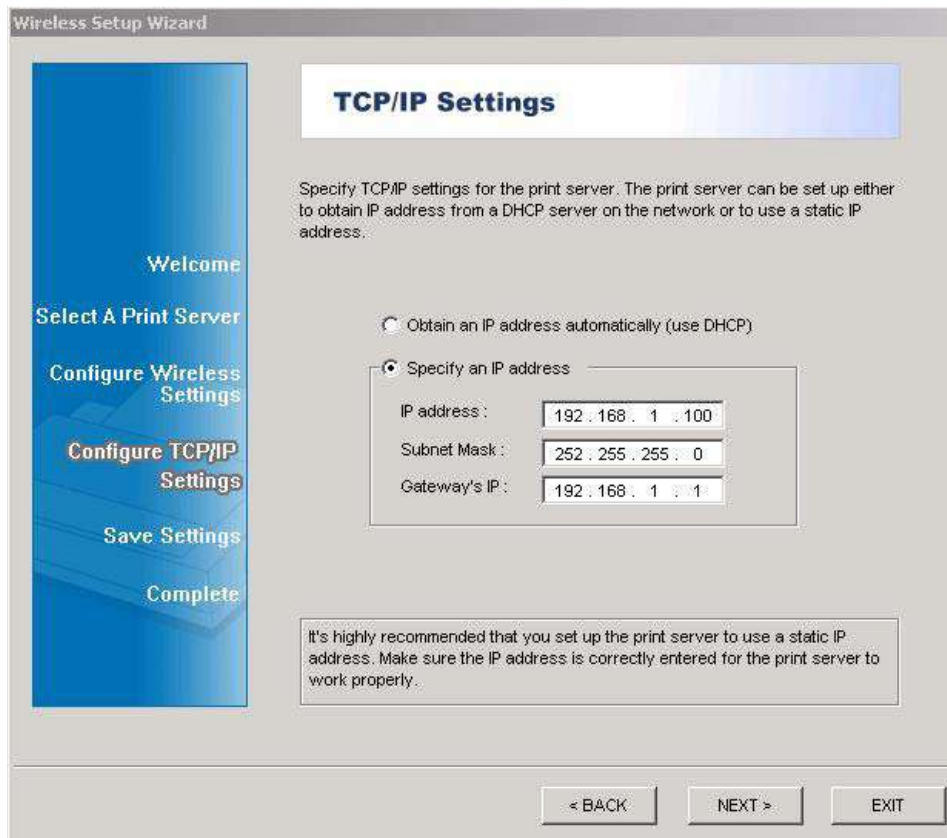
**Data Transmit Rates** Auto or 1,2Mbps, 5.5Mbps or 11Mbps.

Click **NEXT**.

9. Choose Enable the WEP Encryption as you need, and click **NEXT**. (check your wireless access point or another wireless device for this information.)



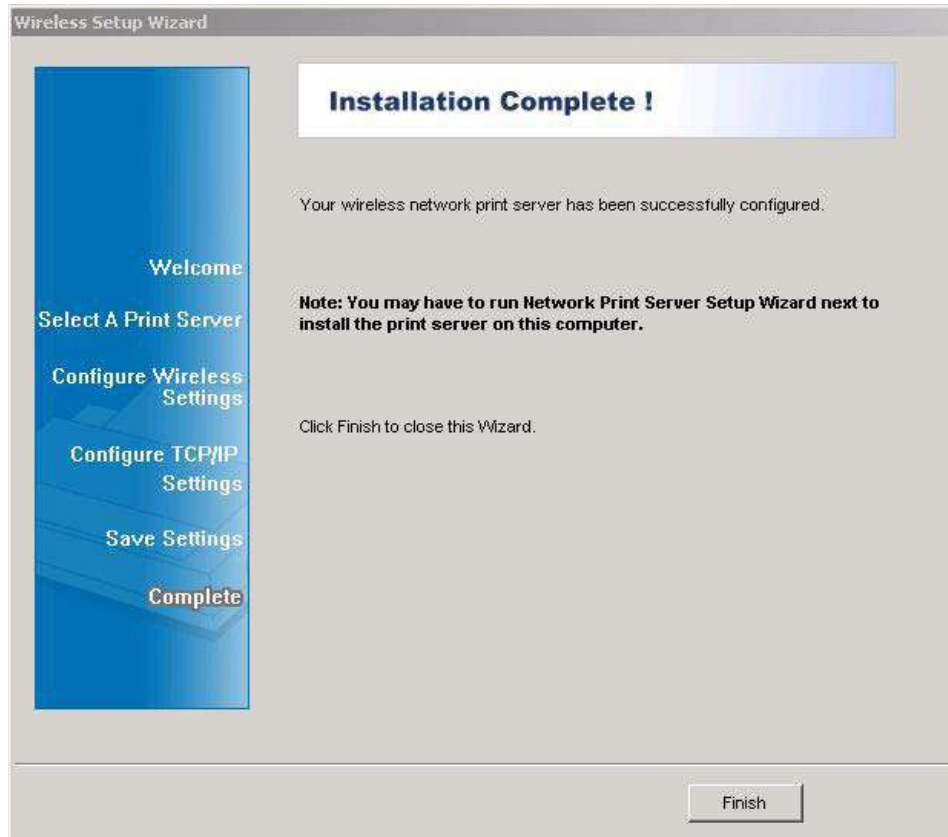
10. Specify a fixed IP address or use dynamic IP address, then click **NEXT**.



11. In this page, you can confirm your setting value again. Click **NEXT**.



12. Done.



13. Add the new device into /etc/hosts by logging into the server as root, and typing:  
# mcedit /etc/hosts

```
hosts [-M--] 25 L:[ 1+ 5 6/ 16] *(208 / 446b)= . 10 0x0A
# @(#)hosts,v 6.1 1993/08/21 02:17:48 stevea Exp - STREAMware TCP/IP source
# SCCS IDENTIFICATION
127.0.0.1 localhost
192.168.1.1 server
192.168.1.250 tcserver #tcserver#
192.168.1.50 ps50_net1
192.168.1.101 tcs101_net1
192.168.1.102 tcs102_net1
192.168.1.103 tcs103_net1
192.168.1.104 tcs104_net1
192.168.1.105 tcs105_net1
192.168.1.106 tcs106_net1
192.168.1.107 tcs107_net1
192.168.1.200 pc200_net1
192.168.1.201 pc201_net1

1Help 2Save 3Mark 4Replac 5Copy 6Move 7Search 8Delete 9PullDn 10Quit
```

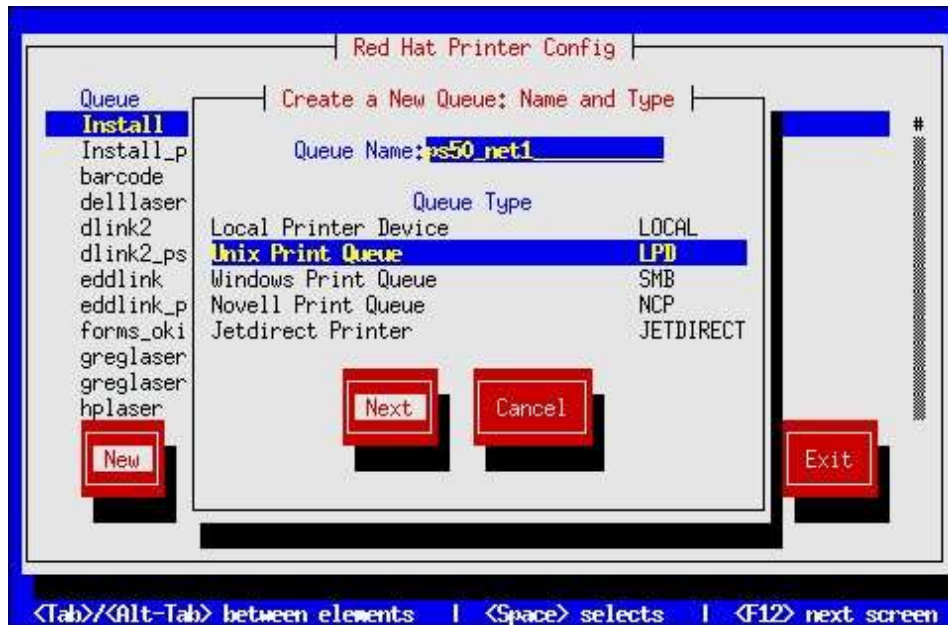
14. Press [F2] to save, and [F10] to quit.

15. Type: # sysut

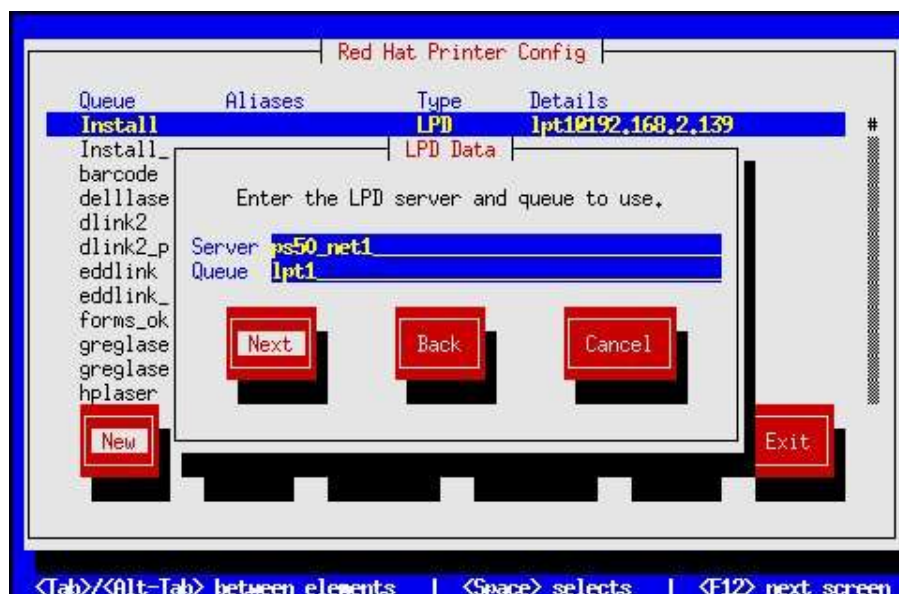
16. Select Printers -> Spooler Printer Maintenance

17. Select New and hit enter.

18. Type in the queue name (this should match what you put in the host table), select Linux Print Queue, and click Next.



19. Put in the server's host name (this should match what you put in the host table), put in the port name lpt1, and click next.

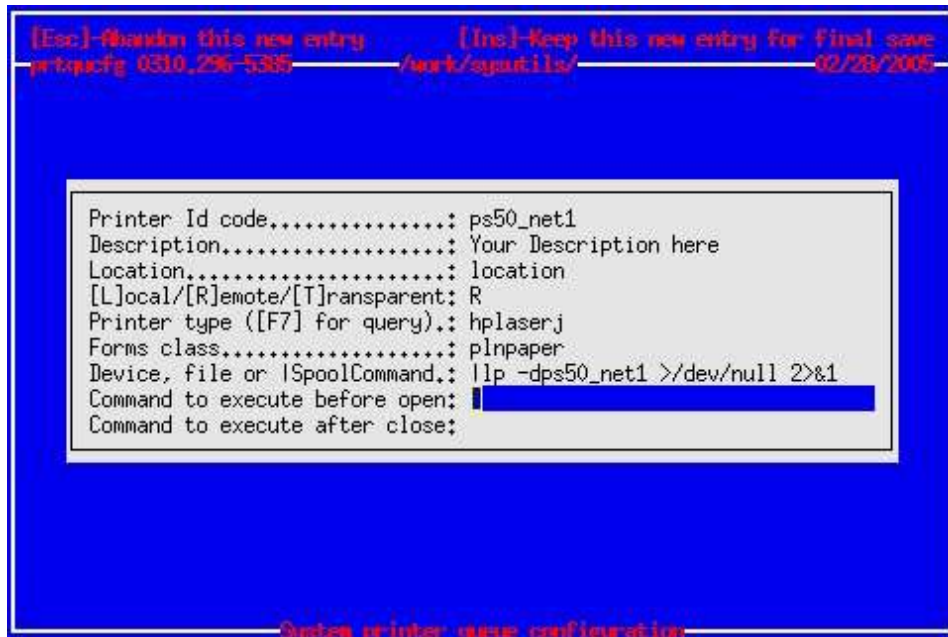


20. Select Raw Print Queue, and hit next.



21. Select finish, then exit.

22. Now select Software Printer mainenance, and hit insert to add. Your setup should look similar to this:



23. Hit insert to save, and F10 to save and exit.