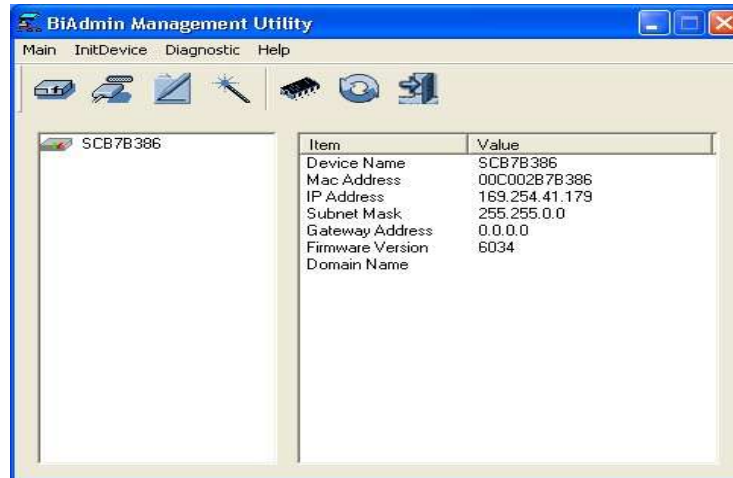
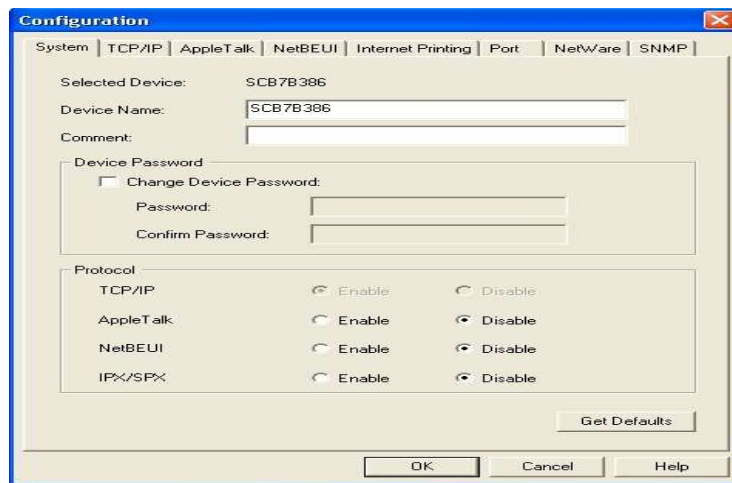


# Setting Up TRENDnet Print Server

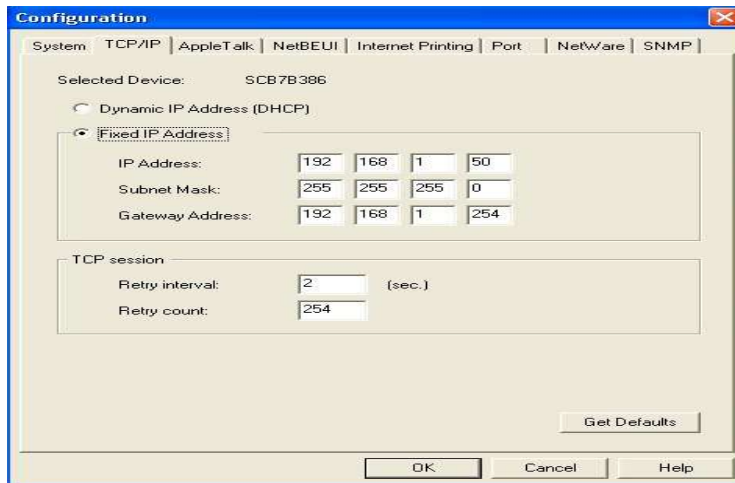
1. Open up the Bi-Admin utility, this will detect the print servers hooked up to the machine/network.
2. select your print server, and choose the print server you are configuring, then click Main -> Configure (or the Folder with a Pen to configure).



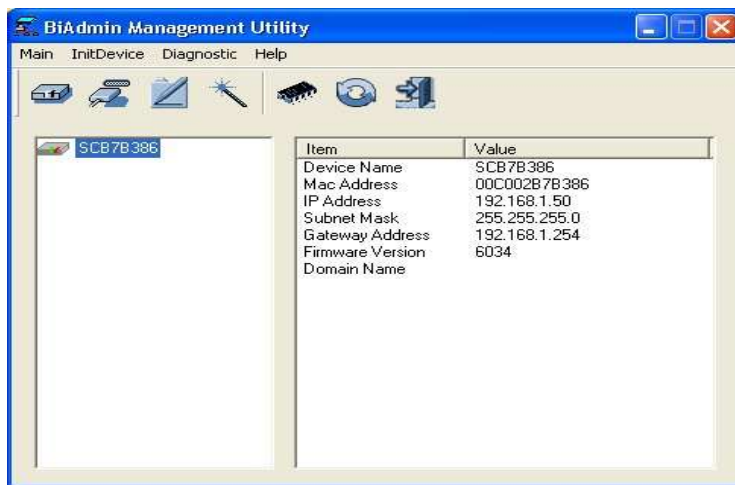
3. On the System Tab, select Disable for Apple Talk, NetBEUI, and IPX/SPX.



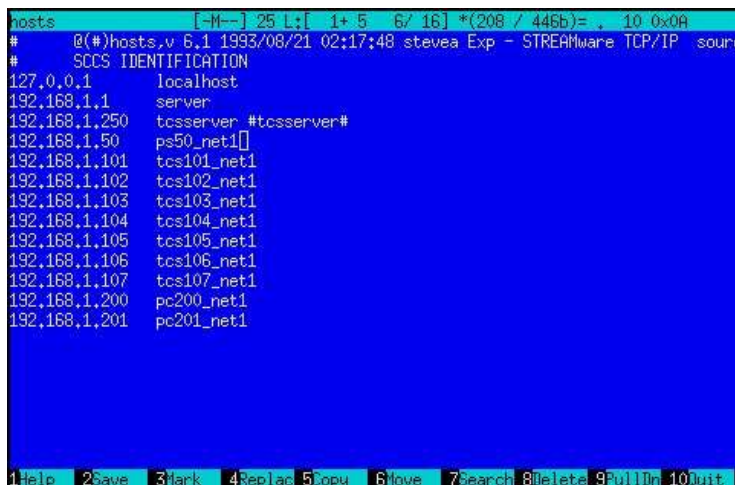
4. Click on the TCP/IP Tab, and select Fixed IP Address. Input the desired IP, Subnet mask, and Gateway in the appropriate field. The Subnet mask will usually be 255.255.255.0



- Click OK, and this should take you back to the Bi-Admin page, and show the changed IP address

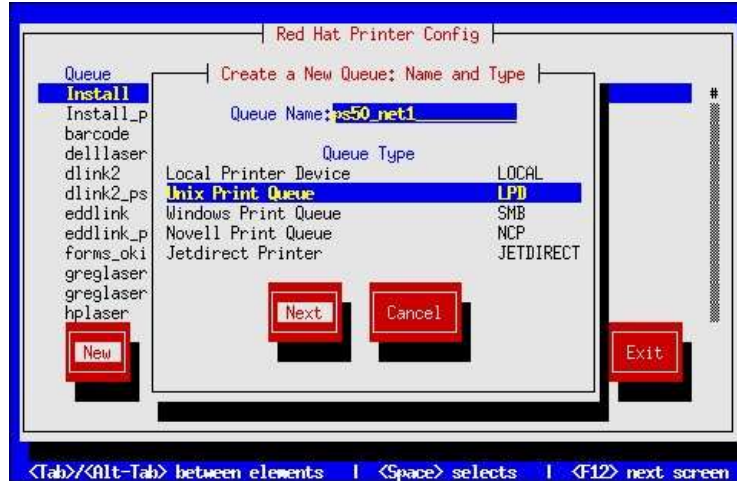


- Add the new device into /etc/hosts by logging into the server as root, and typing:  
# mcedit /etc/hosts

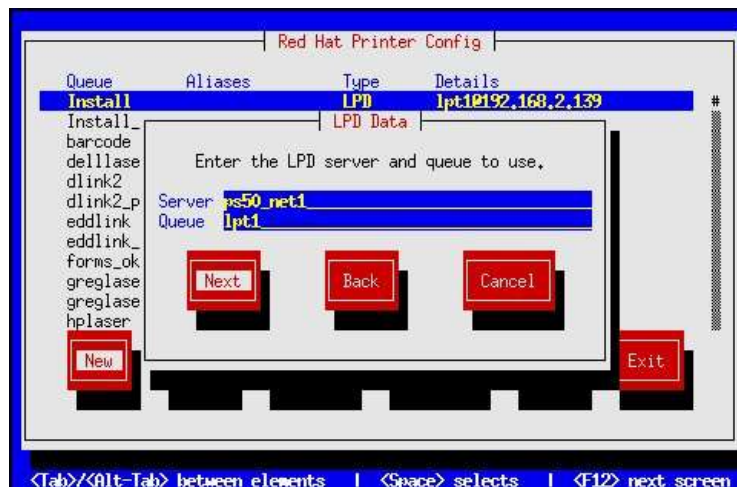


- Press [F2] to save, and [F10] to quit.
- Type: # sysut
- Select Printers -> Spooler Printer Maintenance
- Select New and hit enter.

11. Type in the queue name (this should match what you put in the host table), select Linux Print Queue, and click Next.



12. Put in the server's host name (this should match what you put in the host table), put in the port name lpt1, and click next.

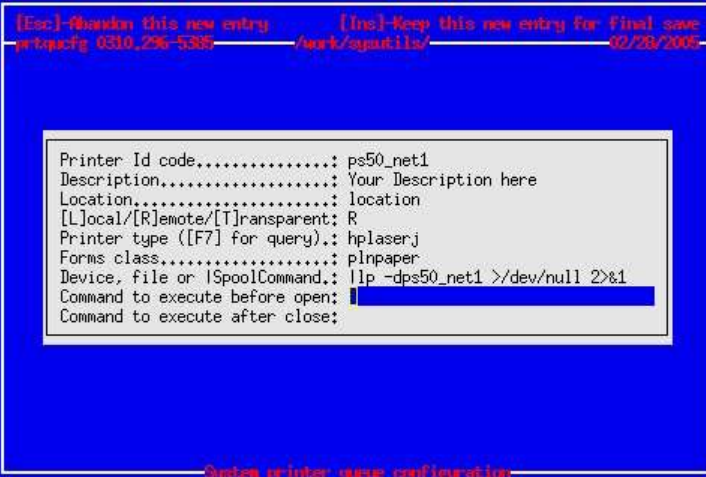


13. Select Raw Print Queue, and hit next.



14. Select finish, then exit.

15. Now select Software Printer maintenance, and hit insert to add. Your setup should look similar to this:



```
[Esc]->Delete this new entry      [Ins]->Keep this new entry for final save
prtconf 0310.236-5385             /usr/bin/gunzip             02/28/2005

Printer Id code.....: ps50_net1
Description.....: Your Description here
Location.....: location
[L]ocal/[R]emote/[T]ransparent: R
Printer type ([F7] for query): hplaserj
Forms class.....: plnpaper
Device, file or \SpoolCommand.: llp -dps50_net1 >/dev/null 2>&1
Command to execute before open:
Command to execute after close:
```

~~Done printer user configuration~~

16. Hit insert to save, and F10 to save and exit.