

# RESETTING NETPRINT POCKET TO FACTORY DEFAULTS

## **Step 1: Turn Power Off**

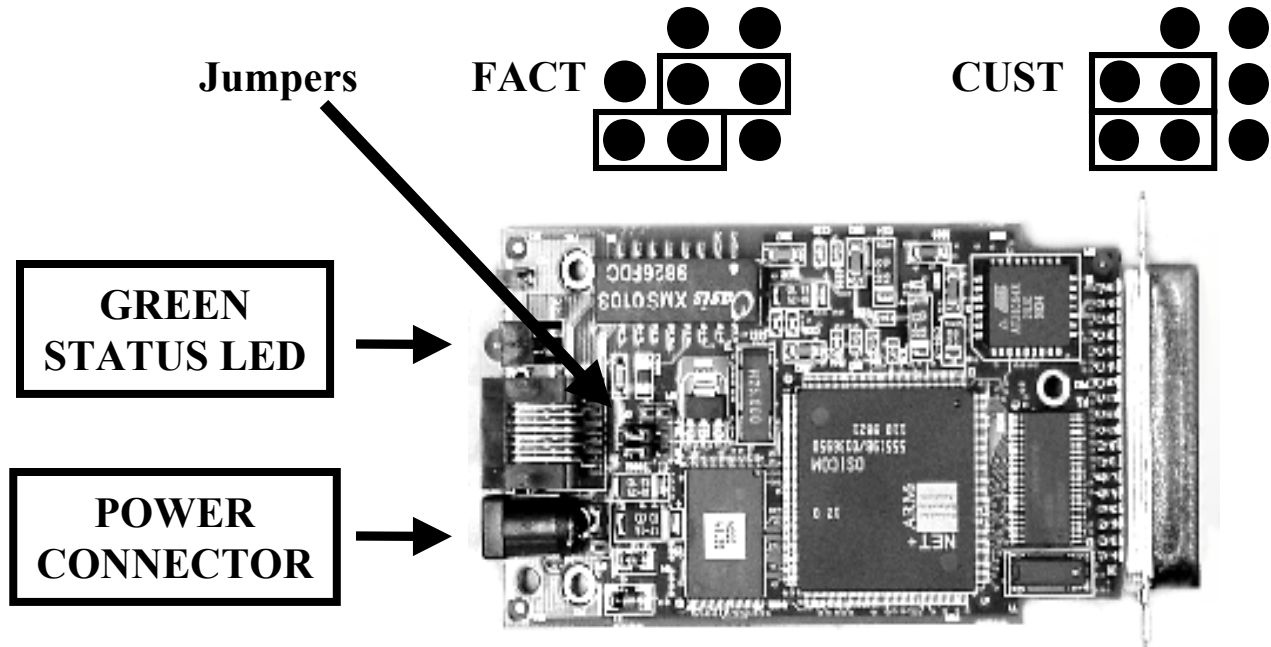
Make sure you do not have the NETPrint unit plugged into a wall outlet BEFORE you try to open it. Always check to make sure it is unplugged.

## **Step 2: Open Cabinet**

To open the Netprint Pocket use a philips head screw driver to remove the the screws holding the the cover together. The plastic housing will open into two pieces.

## **Step 3: Locate Jumper(s)**

Locate the Reset to Factory Default jumper on the component side of the board. See the following illustration.



## **Step 4: Change the Factory Default Settings Jumper**

The NETPrint is shipped with the jumper set to CUST for your custom configuration.

To set the NETPrint back to factory default:

1. Disconnect the power, network and printer from the NETPrint.
2. Move the jumper from CUST to FACT.
3. Connect the power cord only to the NETPrint.
4. Watch the LED on the top of the unit. It will go through two sets of flashes (4 slow, followed by 15 fast), then return to solid green.
5. When the LED remains solid green, disconnect the power cord.
6. Move the jumper back to CUST from FACT.
7. Replace the cover on the NETPrint by snapping the two plastic pieces together. Make sure you line up the back panel which contains all the connections into its slots. Snap together the top and bottom halves, re-insert the three screws back into place.
8. Attach the printer to the NETPrint.
9. When the printer is "Ready," attach the power cord and network cable (if you have removed it). The unit is now ready to configure.

## Using ping

Use the following procedure to enter the IP address of a new print server.

1. Turn off the printer.
2. Log in as `root` on a host on the same subnet as the print server.
3. Find the Mac address of the Osicom Print Server. The address is printed on the configuration status report each time you turn the printer on and on the back of the netprint pocket case.
4. Edit the *hosts* file (usually */etc/hosts*) to add the IP address and print server's name. See the network administrator for the IP address. For example, a print server with a name of *printfast* and an IP address of 192.9.200.200 has the following entry:

**192.9.200.200 printfast**

5. Add an entry to the *arp* cache for the print server's IP address and mac address. For example:

**arp -s 192.9.200.200 00:40:c8:00:00:ff**

6. Check the printer to see that the print server is connected to the network. Turn on the printer. Power up the print server.
7. Send a *ping* command to the Osicom Print Server to verify it is running on the network. For example:

```
root 192.9.200.200 00
root 0000000000
```

8. If the print server has the address, the result is a confirmation message:

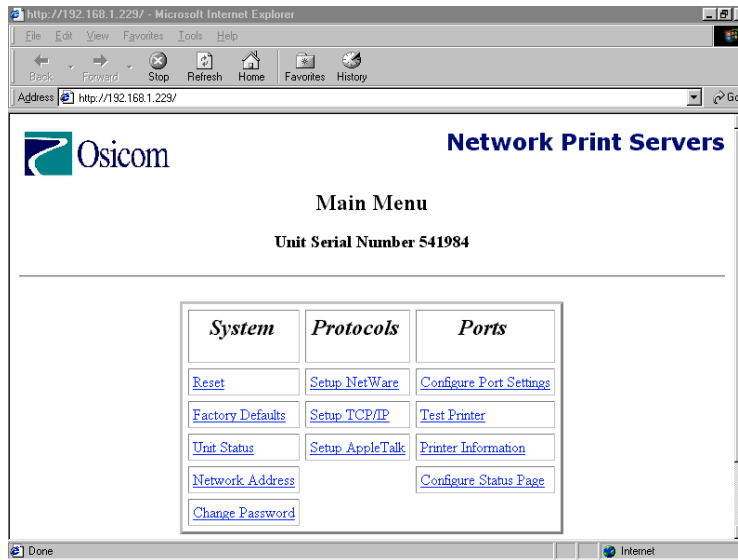
```
192.9.200.200 00 000000
```

Reset the NETPrint and then send the ping command again to verify that the print server obtained its IP address.

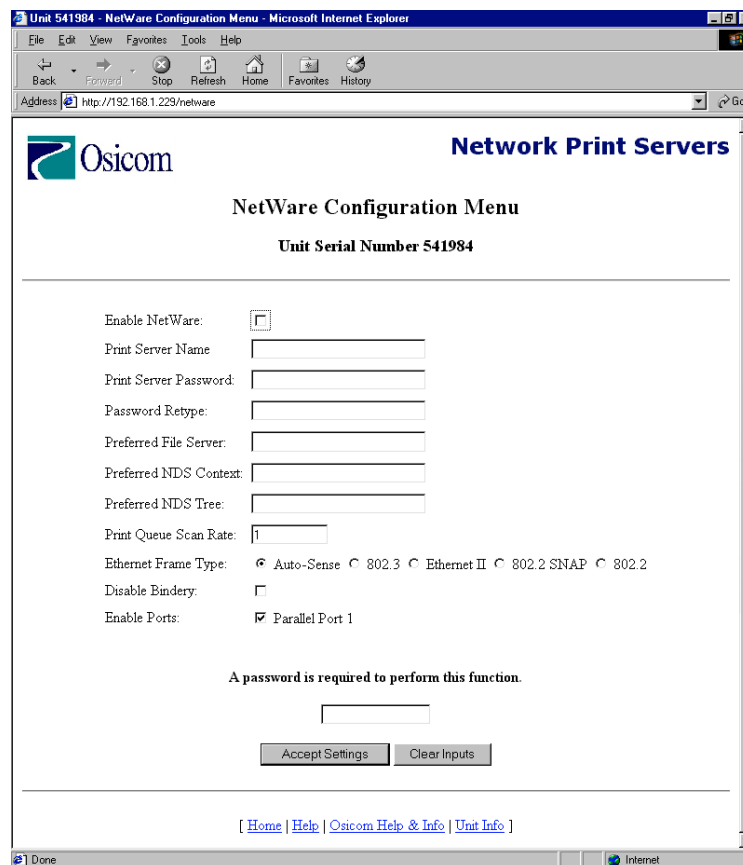
9. Remove the entry from the arp cache using the following command. Specify the print server either by its IP address or by its name. For example:

```
root -r 0000000000
```

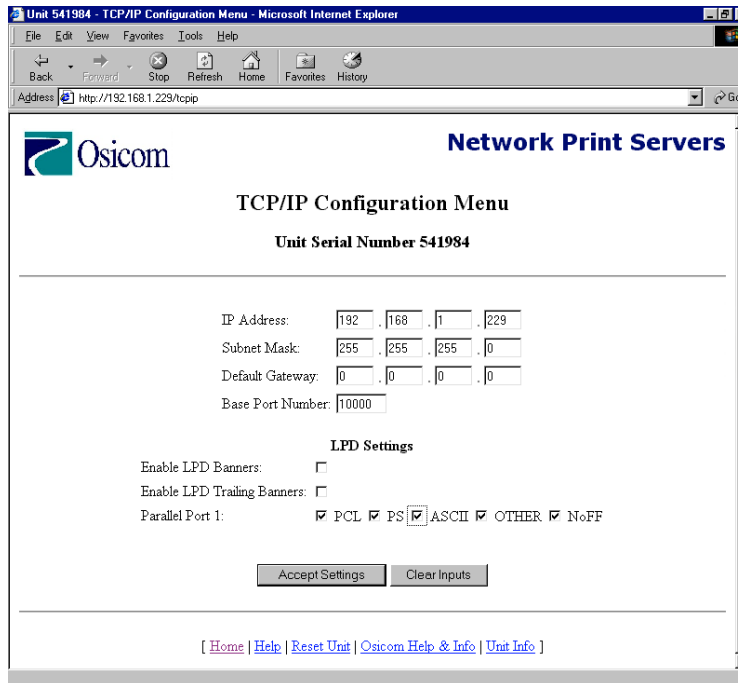
10. After resetting the netprint, wait until the first test page prints ( may take up to 5 minutes).
11. Use a web browser ( any available one under scologin, linux server, windows pc) and type in the ip address of the netprint device as the URL. You will then get a web page main menu of the osicom network print servers.



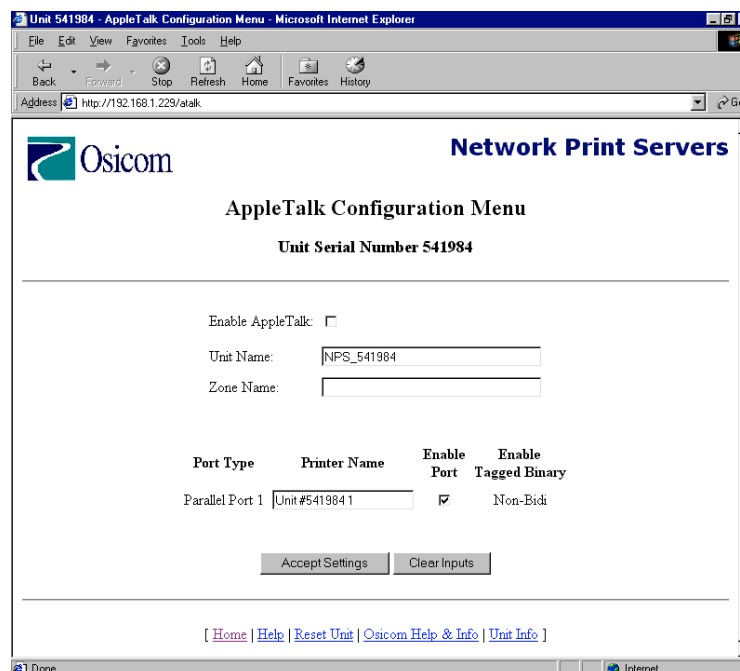
12. From the main menu choose the “setup NetWare” option. Then use the mouse to remove the check mark on the enable NetWare box. Then move to the password box and put in the system password of “sysadm” and then click the accept settings box.



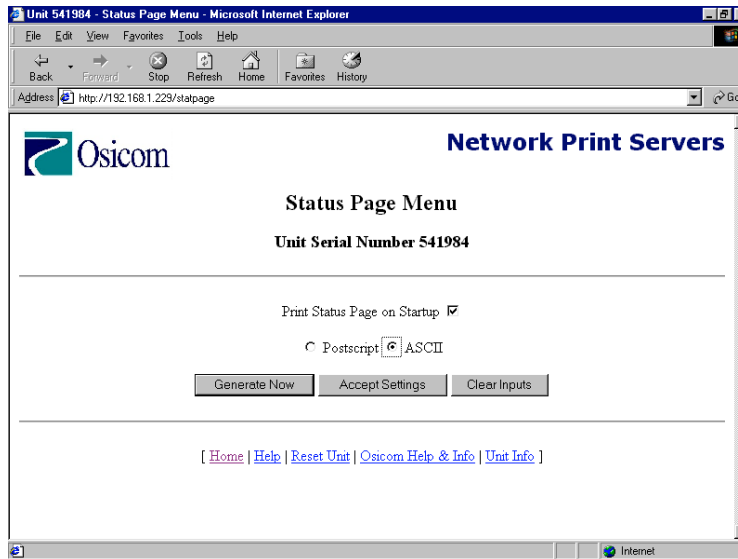
13. After save the settings click on the “home” option to take you back to the main menu. Then choose the “TCP/ip” menu option. Make any changes needed to correctly reflect the network settings for this device. Make sure to enable the ASCII option under parallel port 1 and that the “NOFF” option. After all changes have been made click the “accept settings”.



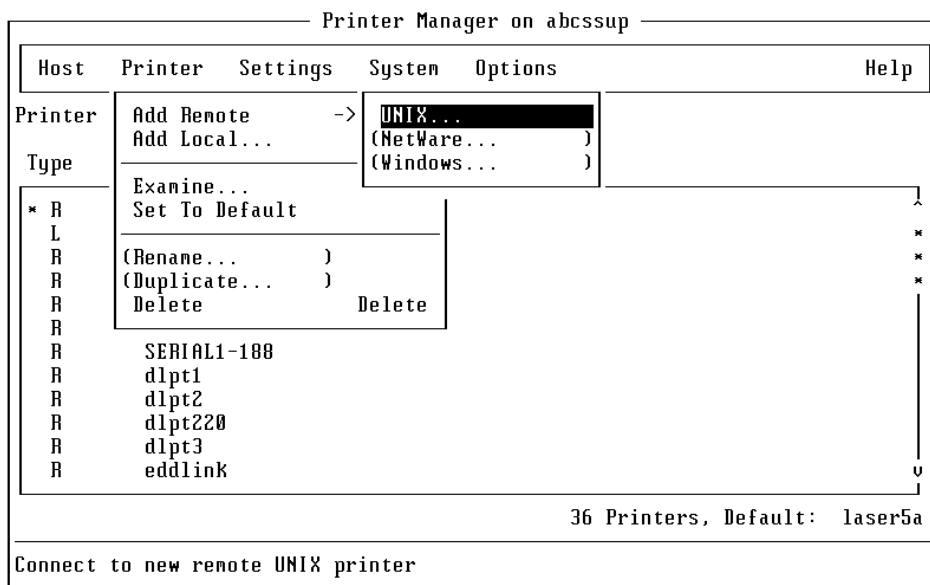
14. After the changes have been saved choose the “home” option to take you back to the main menu. From the main menu choose the “Setup AppleTalk” option. From the AppleTalk menu remove the check mark on the enable apple option. Then click the “accept settings” box.



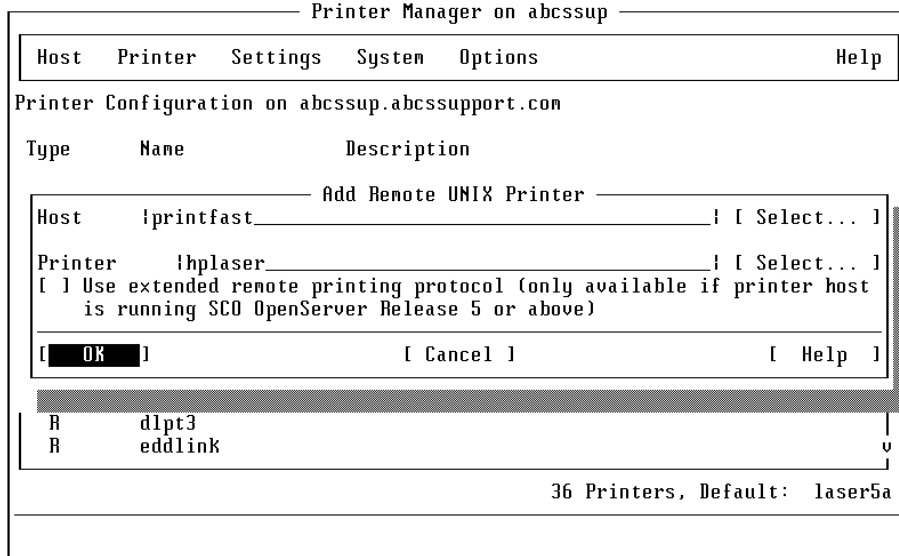
15. After the changes have been saved then click the “home” option to take you back to the main menu. From the main menu choose the “configure status page” option. From the “status page menu” change the status page from postscript to ASCII. Then click the “accept settings” box.



16. Once all the changes have been made, the printer will need to be added to the advantage software. The first step is to add the print in scoadmin. From the scoadmin printers option choose the printer->add remote->Unix option.



17. Under the “add remote Unix printer” window, enter the name of the device as it is listed in the host table. Under the printer name use any advantage acceptable naming( dlpt, hplaser, oki). Make sure to un-select the “use extended remote printing protocol” by removing the asterisk from the [ ] box. Then choose the ok box. NOTE:



18. After exiting from scoadmin cd to the etc directory and nte the printcap file:

```
#cd /etc
#nte printcap
```

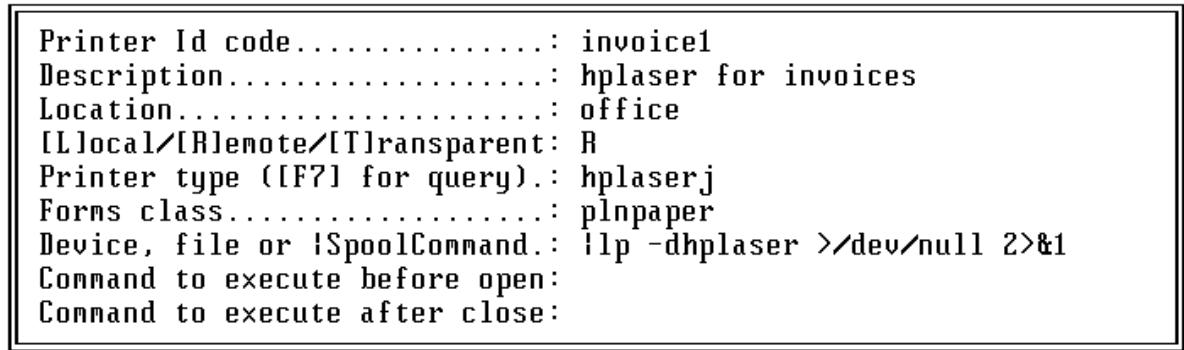
19. From nte find the printer you just added. On the line for that printer will be a listing such as:

```
#####\
:##=.##=#####:##=#####:##=/###/#####/###/#####:
```

20. ##### ## “##=#####” ## “##=####1”

```
#####\
:##=.##=#####:##=####1:##=/###/#####/###/#####:
```

21. ##### ## ##### ## #####(02 ##### ). ##### ## ##### ##, ## ## ##### - #####  
##### - ##### ## ## 08 ## ##### ## ##### ## ##### ##### ## ## ## ## [  
#####. ## ##### ## ## ##### ##### ##### ##### ## ##### ## ## #####.



22. ##### ##### ## ## ##### ##### ##### ##### ## ##### ## ## ##

