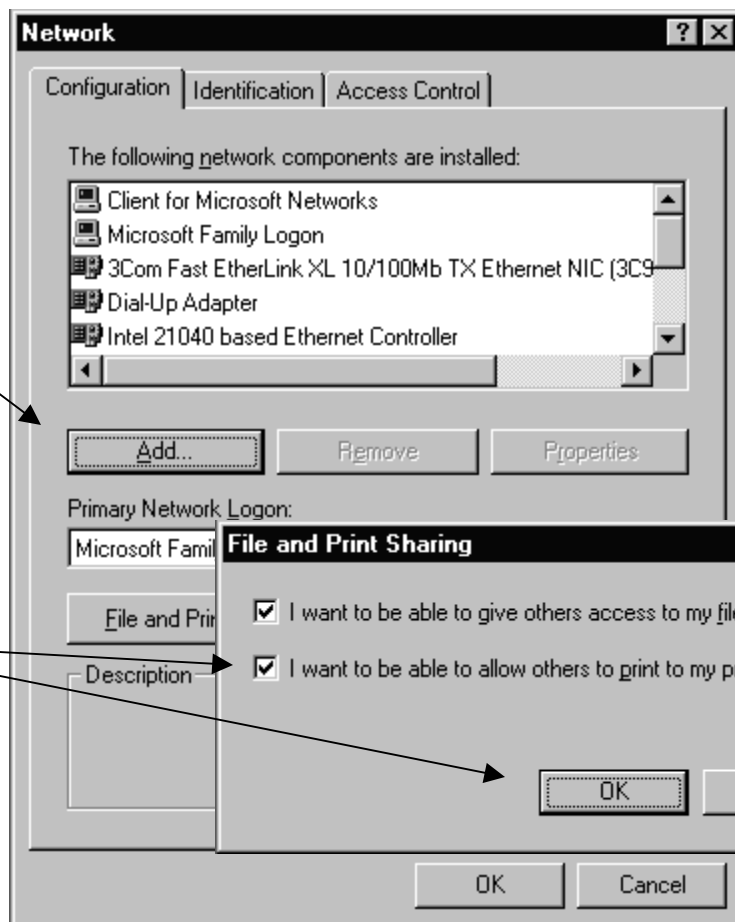


Setting Up Dlinks and Shared Printers on Windows 95 and 98

1. Right click on the network neighborhood and click properties

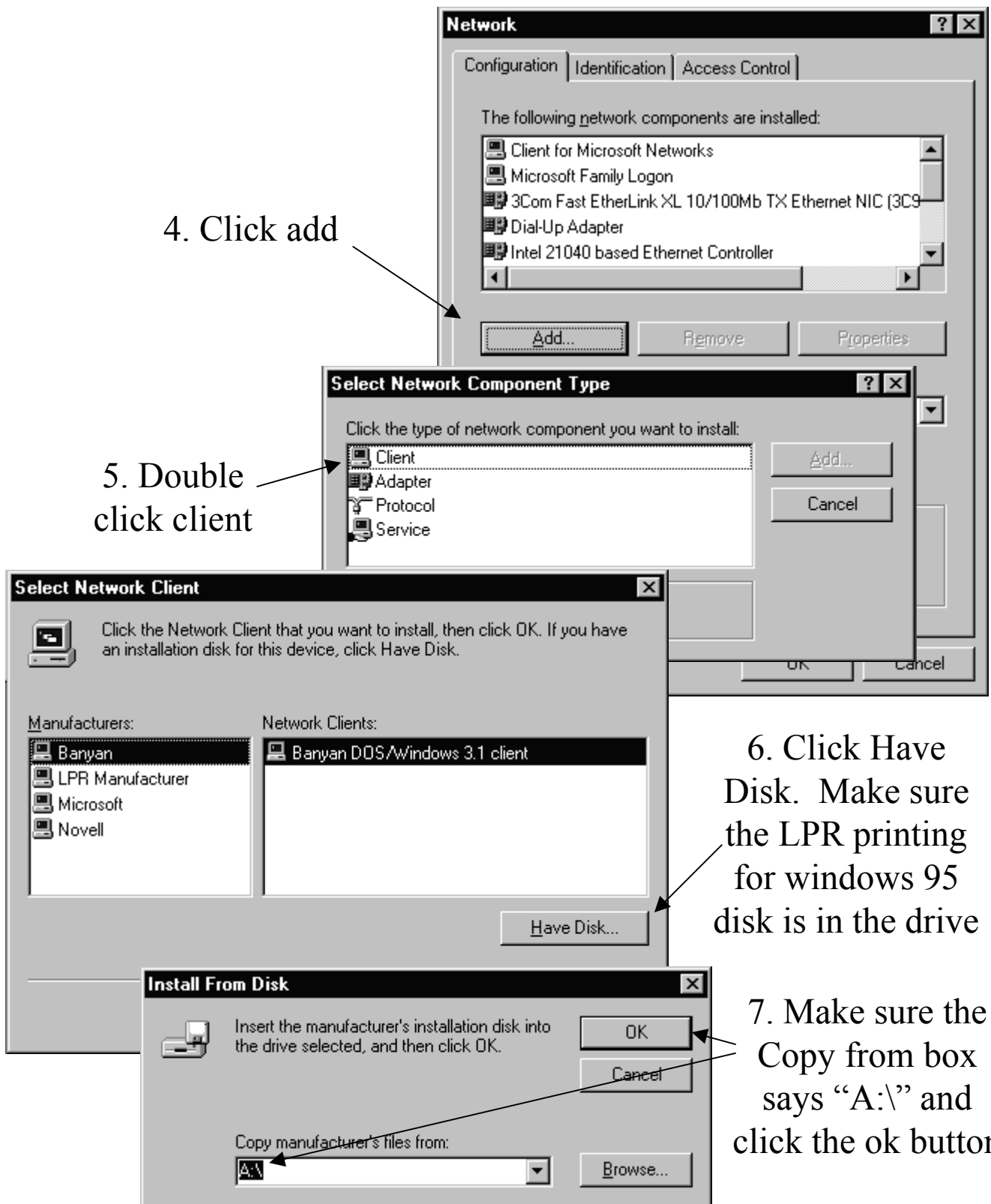


2. Right Click on network neighborhood and click the properties menu item

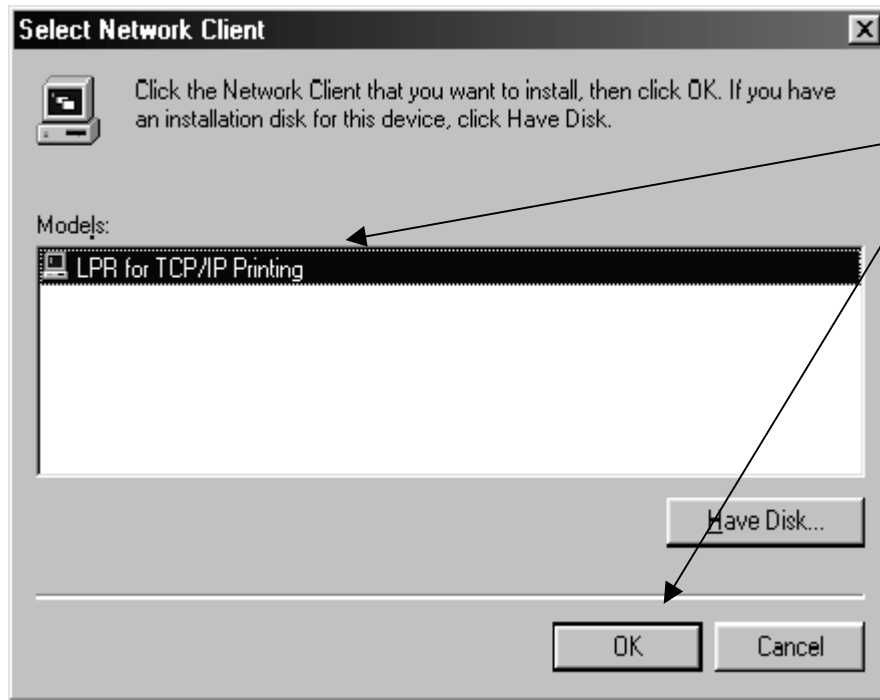


3. Make sure there is a check mark in the “I want to allow others to print to my printer(s)” check box. If there is not a check in the box, click the box with the mouse. Then click ok.

Setting Up Dlinks and Shared Printers on Windows 95 and 98

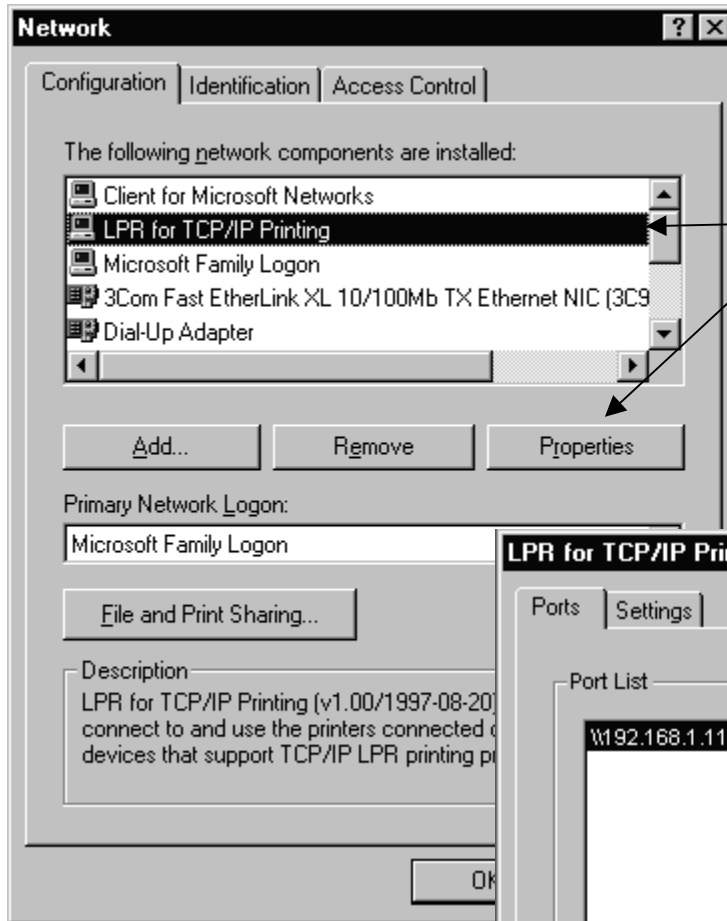


Setting Up Dlinks and Shared Printers on Windows 95 and 98

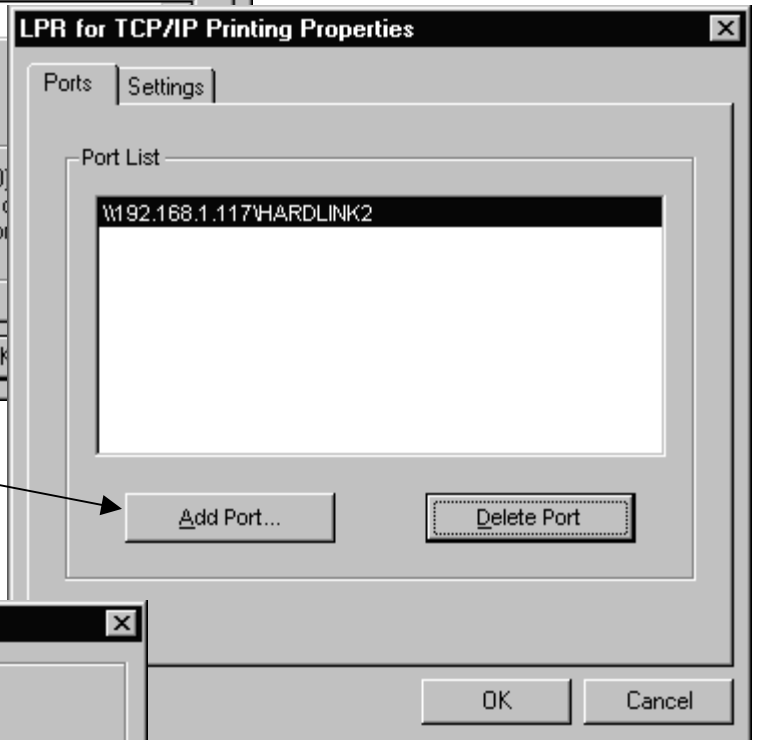


8. Click LPR for TCP/IP Printing and click ok

Setting Up Dlinks and Shared Printers on Windows 95 and 98



9. Click on LPR for TCP/IP Printing to highlight it and then click the properties button



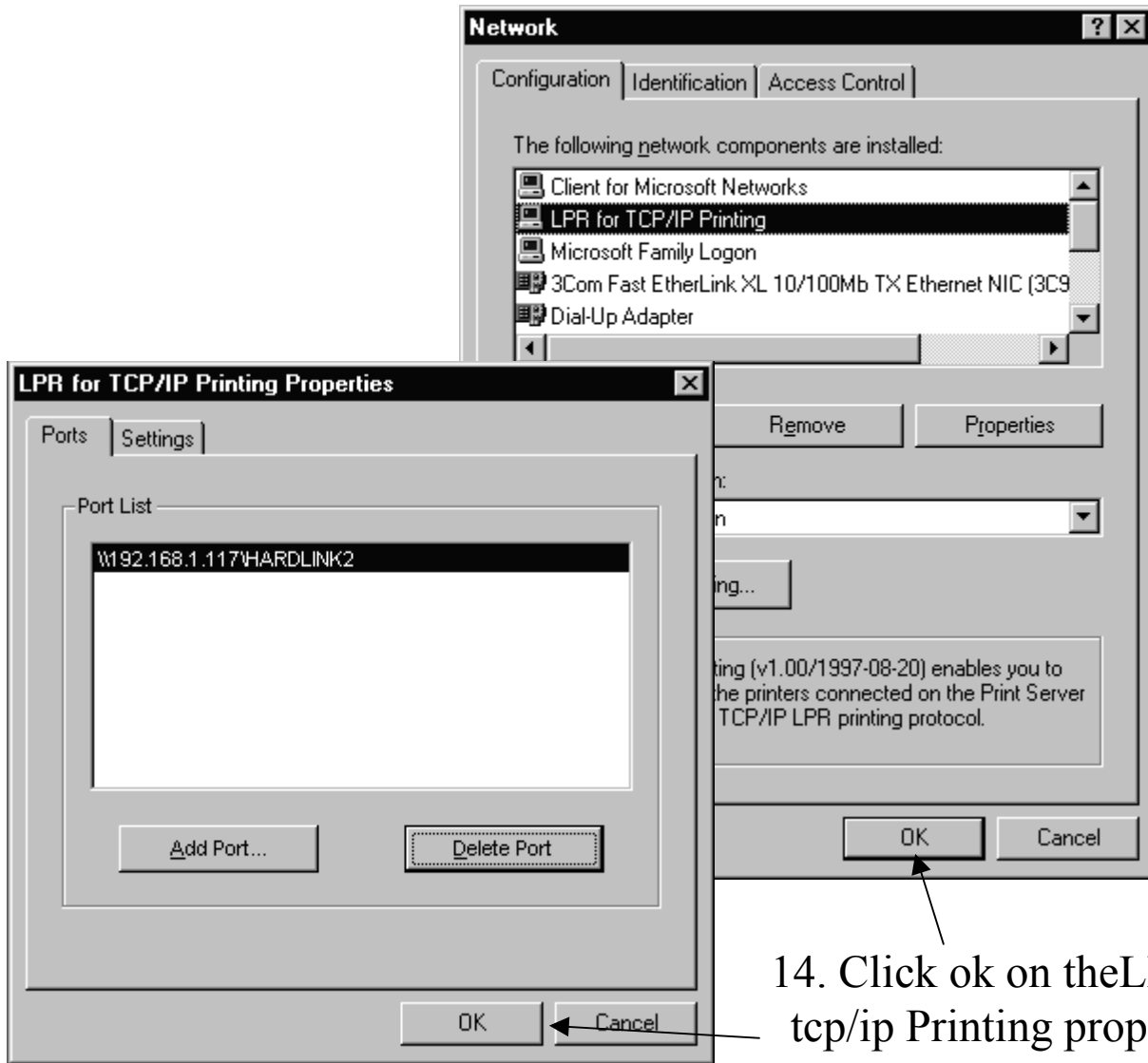
10. Click add port
11. Enter the ip address of the dlink in ip address field



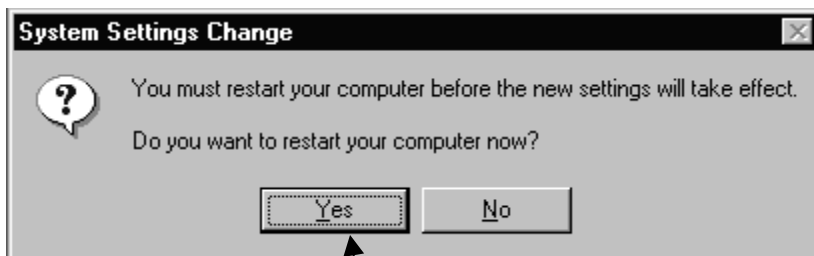
12. Enter the port name in the port name field. The port name is the name of the spool device, eg: dlpt1

13. Click OK once you have placed entries in these two fields.

Setting Up Dlinks and Shared Printers on Windows 95 and 98



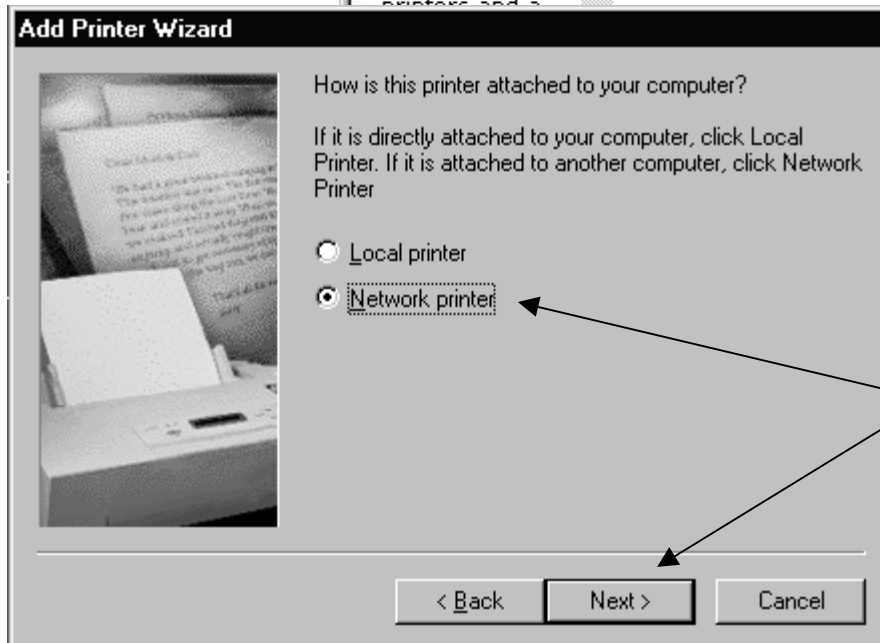
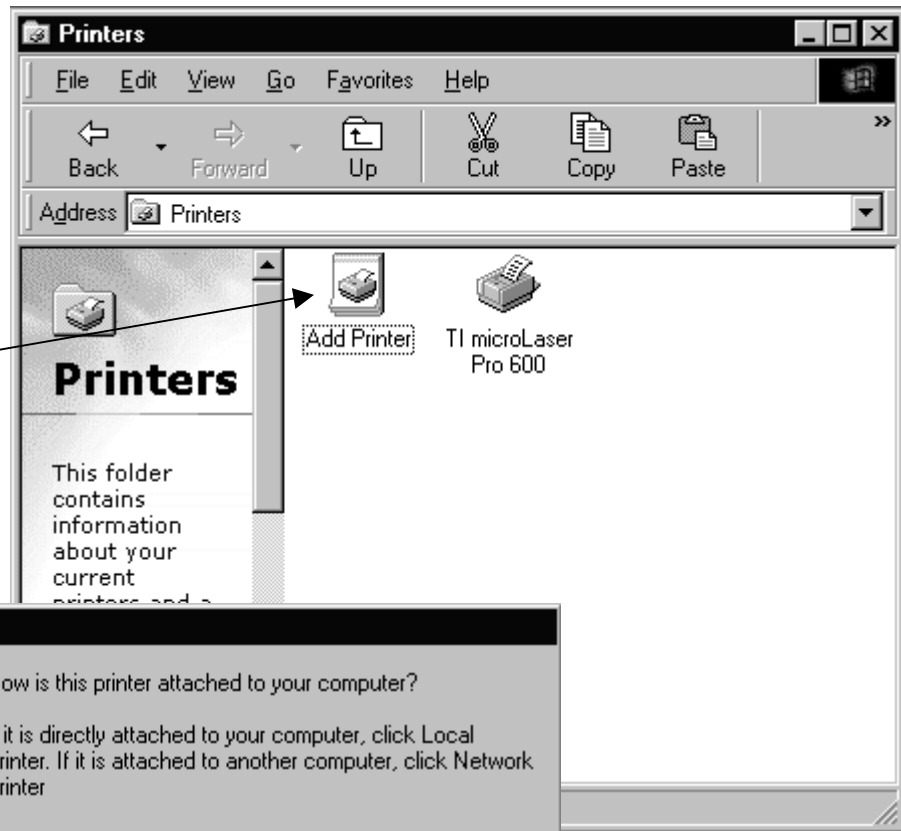
14. Click ok on the LPR for tcp/ip Printing properties box, then click ok on the network box.



15. When prompted to restart the system, make sure all windows are closed and click ok.

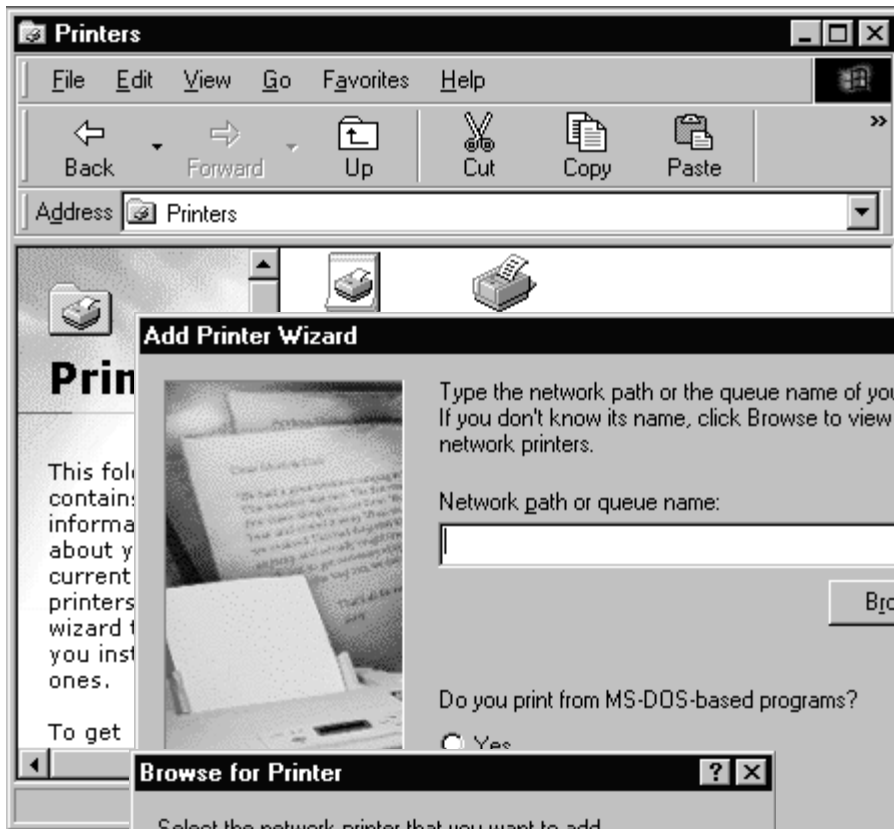
Setting Up Dlinks and Shared Printers on Windows 95 and 98

16. Double click Add Printer.

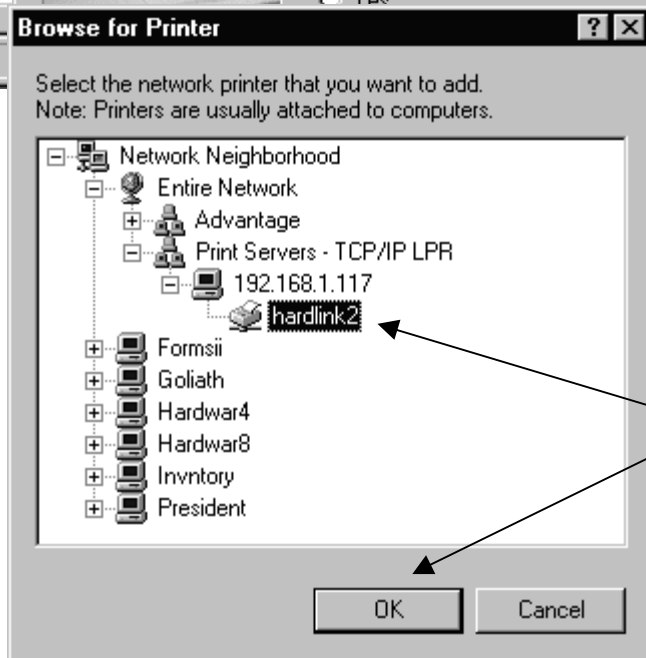


17. Choose local Printer, then click next

Setting Up Dlinks and Shared Printers on Windows 95 and 98



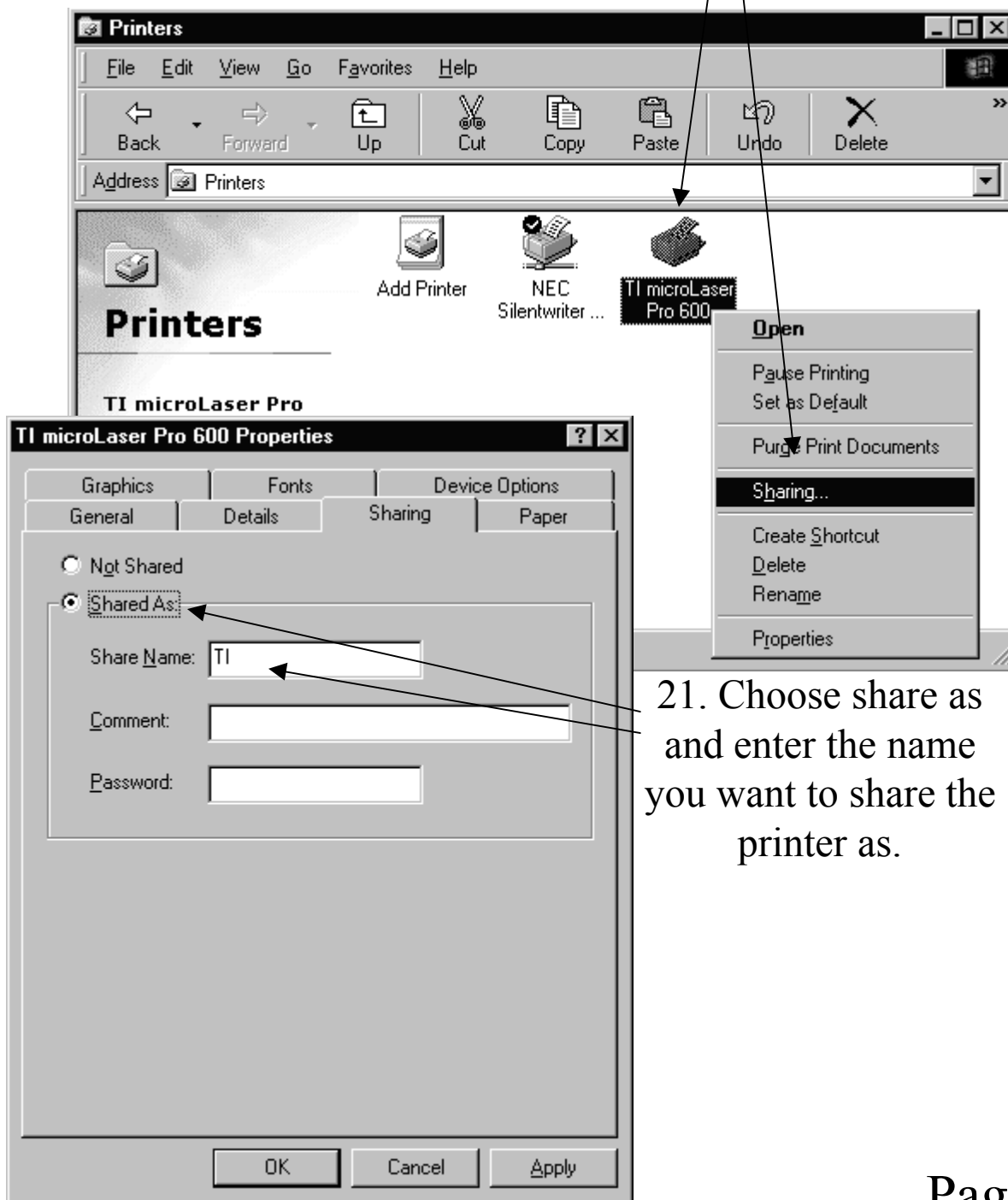
18. Click Browse



19. Double click on the Entire Network Icon, then on the Print Servers icon. Next, double click on the ip address of your dlink, then on the portname. When you have done this click ok.

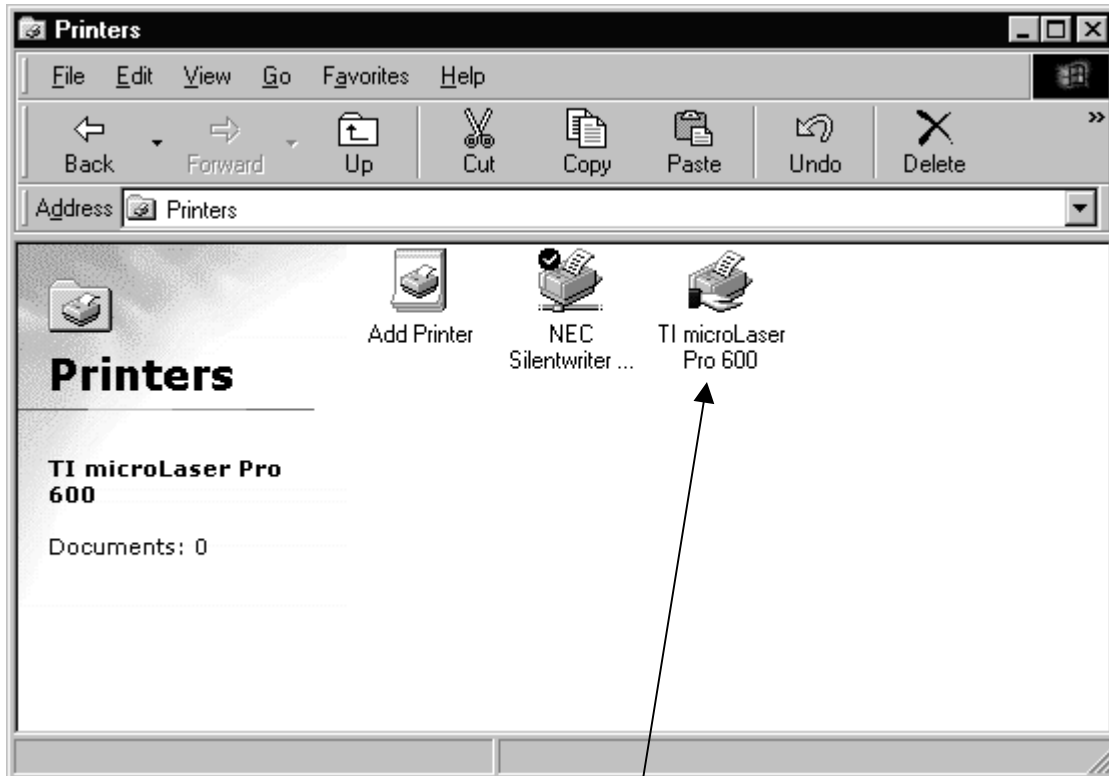
Setting Up Dlinks and Shared Printers on Windows 95 and 98

20. Right Click on the Printer you want to share and choose sharing. It is not possible to share a network printer.



21. Choose share as and enter the name you want to share the printer as.

Setting Up Dlinks and Shared Printers on Windows 95 and 98



22. If you added the printer correctly it should appear with a hand below the printer