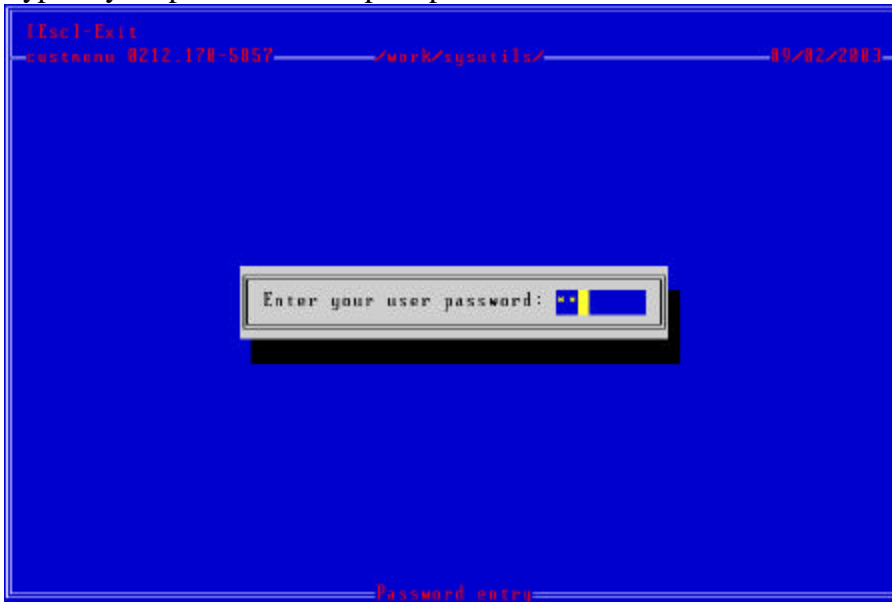


Setting up a psprinter on an Edimax Print Server

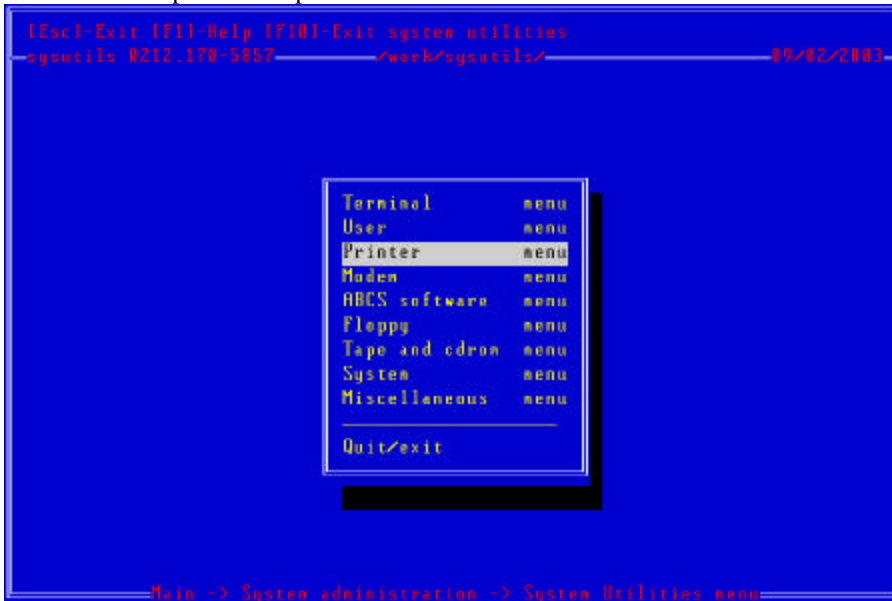
1. Login as root. At the # prompt type in sysut and press enter.

```
[root@localhost root]# sysut
```

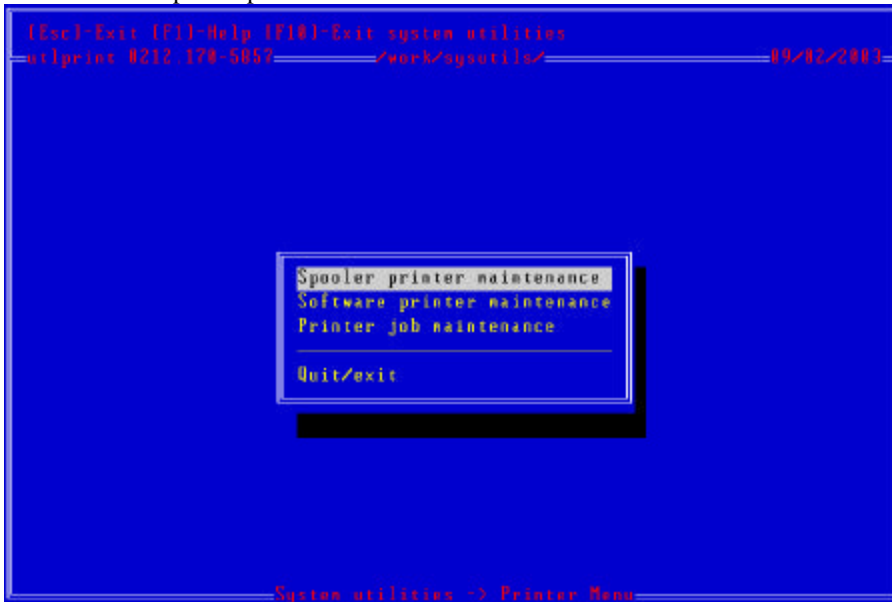
2. Type in your password when prompted.



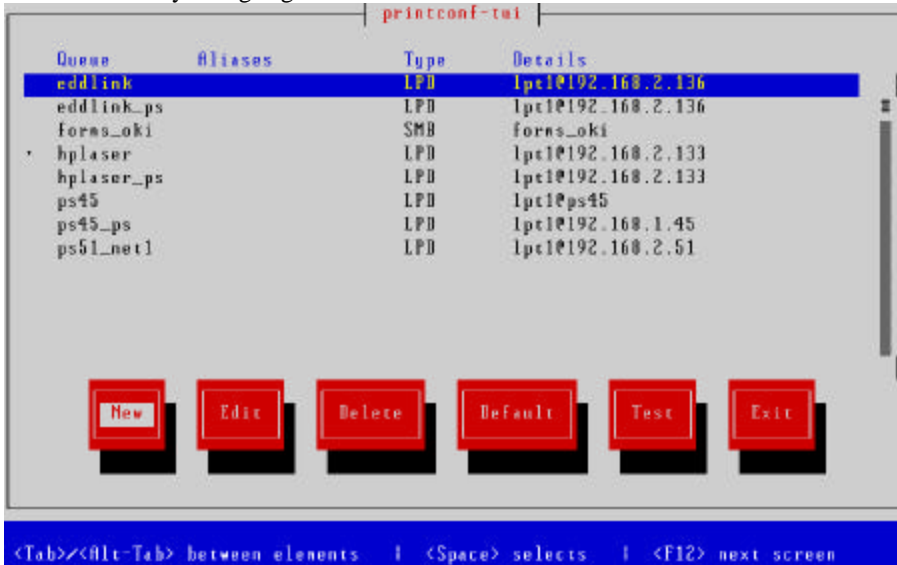
3. Arrow down to printer and press enter.



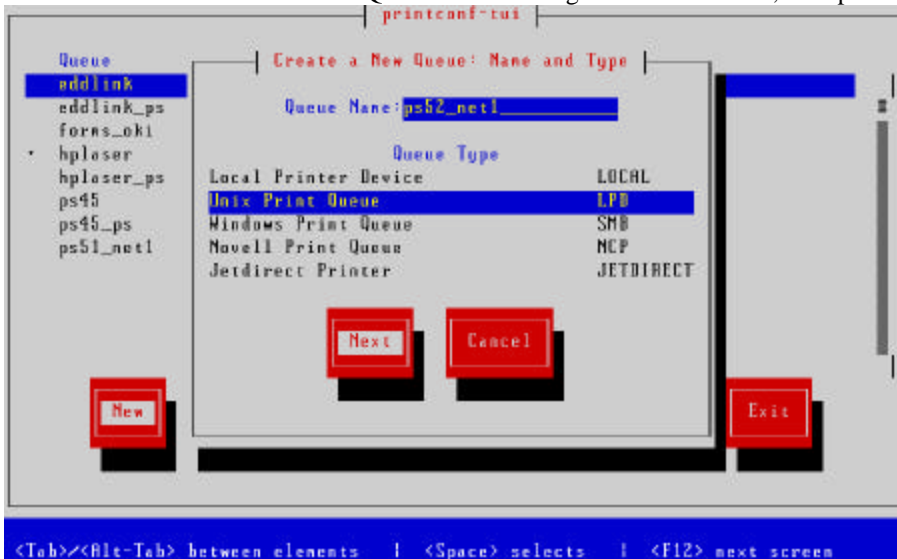
4. Press enter on Spooler printer maintenance.



5. Press the tab key to highlight new. Press enter.



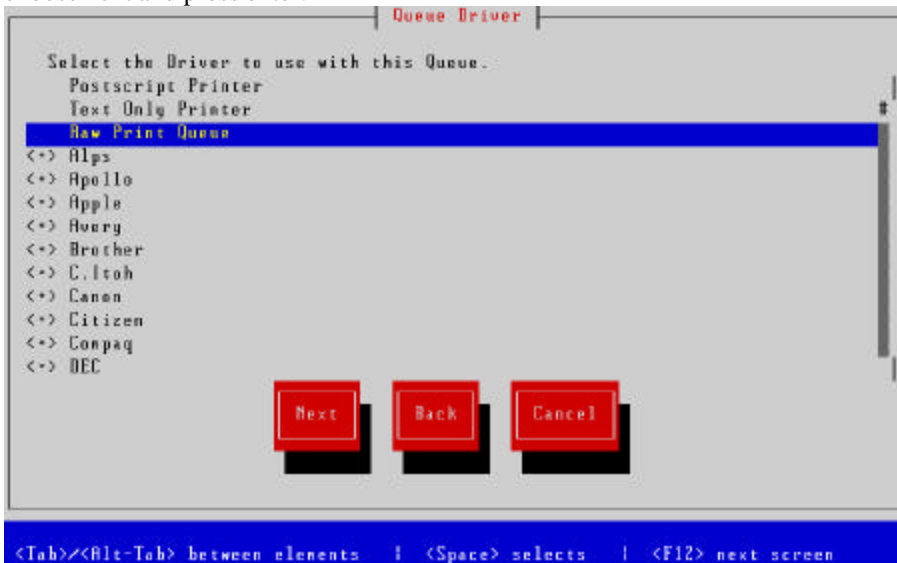
6. Type in the name for the Queue. This will most likely be the name of the print server. Press the tab key and arrow down to choose Unix Print Queue. Press tab again to choose next, then press enter.



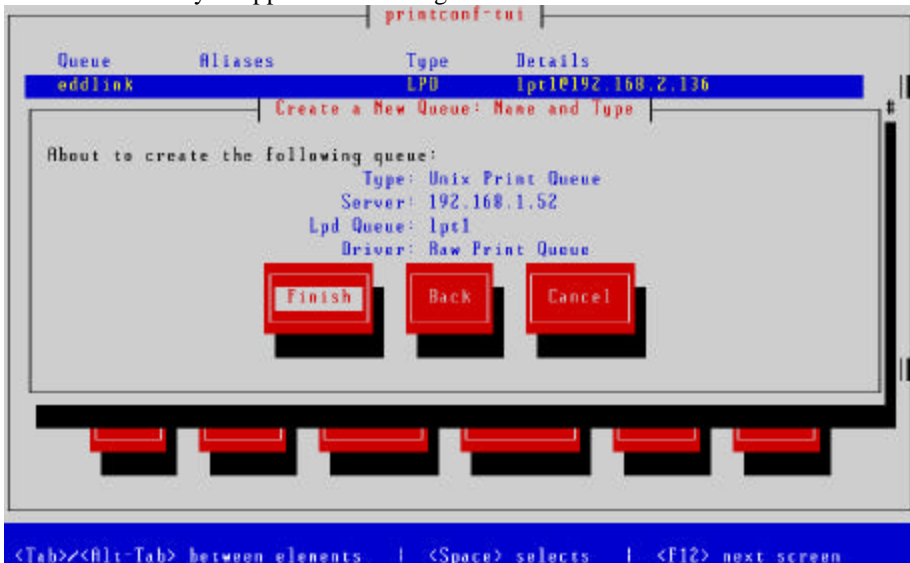
7. Next to Ip type in the IP address of the print server this printer is attached to. Next to Queue, you will put lpt1.



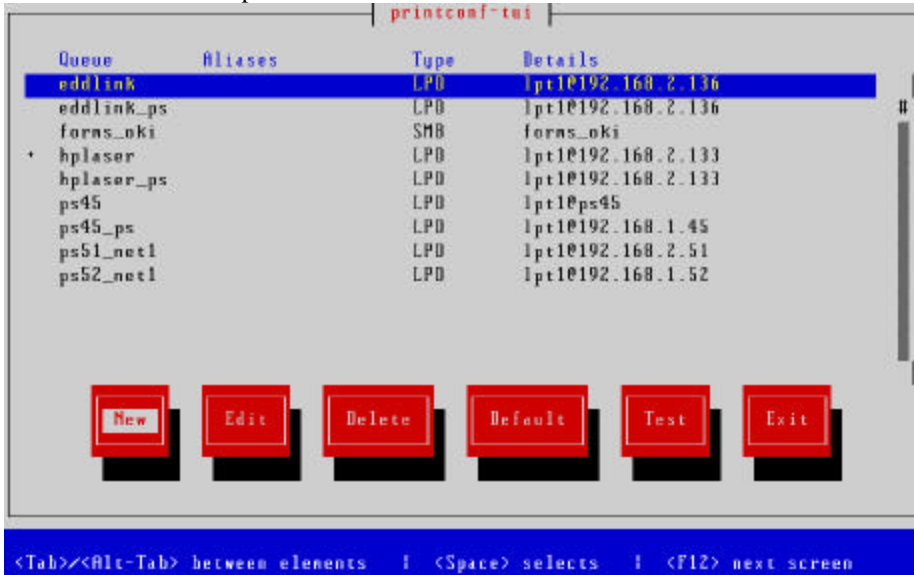
8. Choose Raw Print Queue for the Queue Driver by using the arrow keys to scroll down to it. Press the tab key to choose next and press enter.



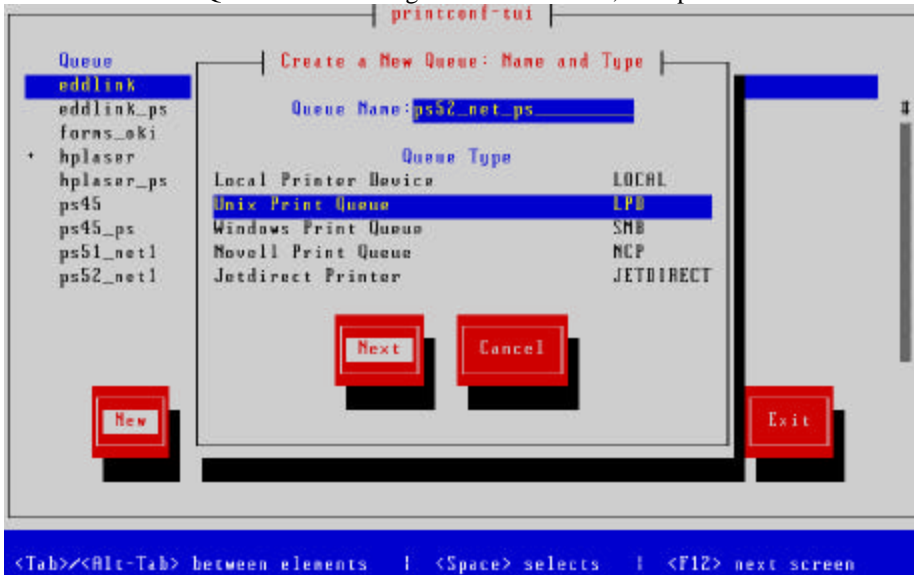
9. Press the enter key to approve the settings.



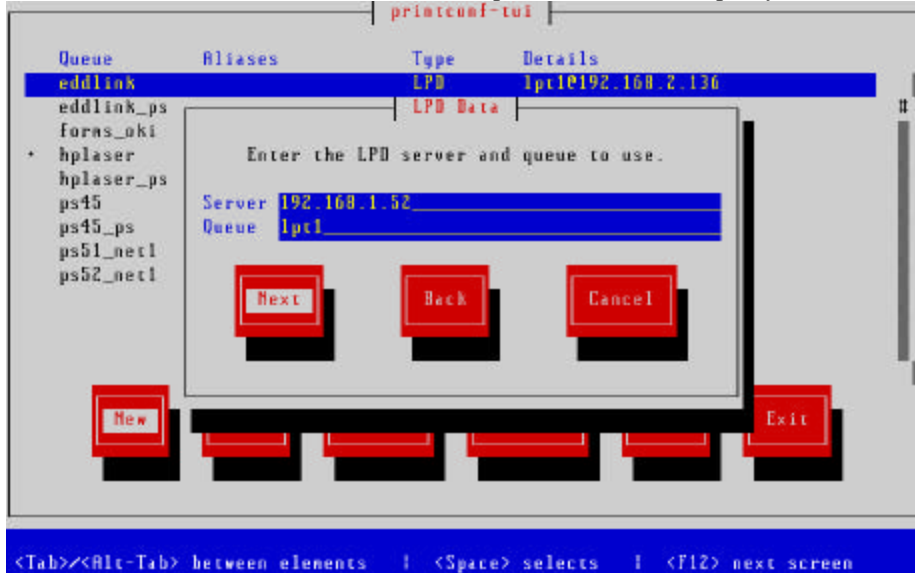
10. Tab down to new and press enter.



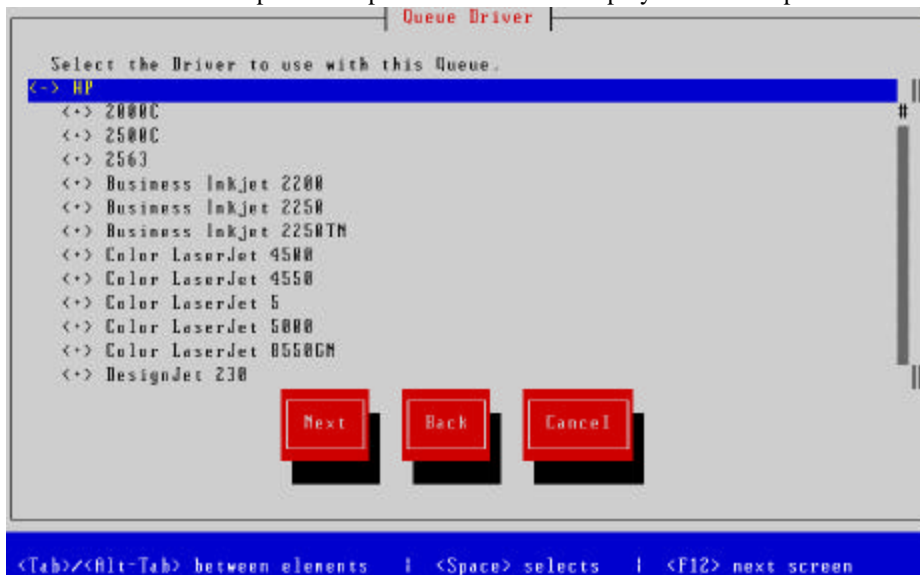
11. Enter the same Queue Name you entered earlier, followed by `_ps`. For example, if you entered the Queue name `ps52_net1` on the previous Queue, this Queue name will be `ps52_net1_ps`. Press the tab key and arrow down to choose Unix Print Queue. Press tab again to choose next, then press enter.



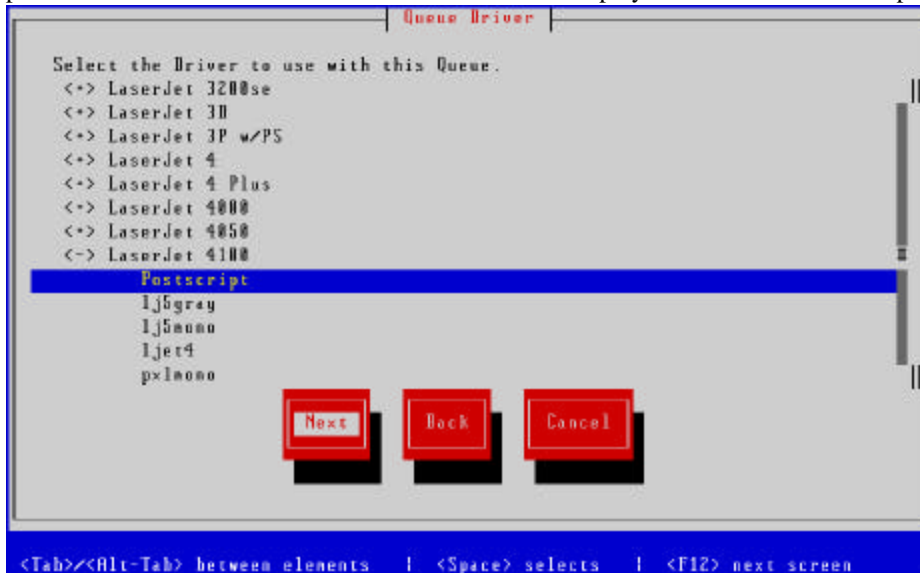
12. Enter the IP address of the thin client next to Ip and enter the same port you entered earlier.



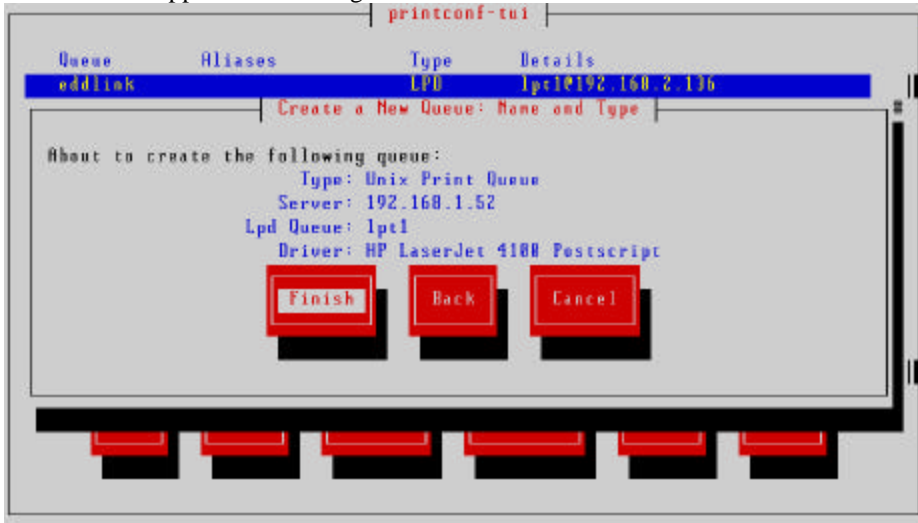
13. Arrow down to HP and press the space bar. This will display a list of HP printers.



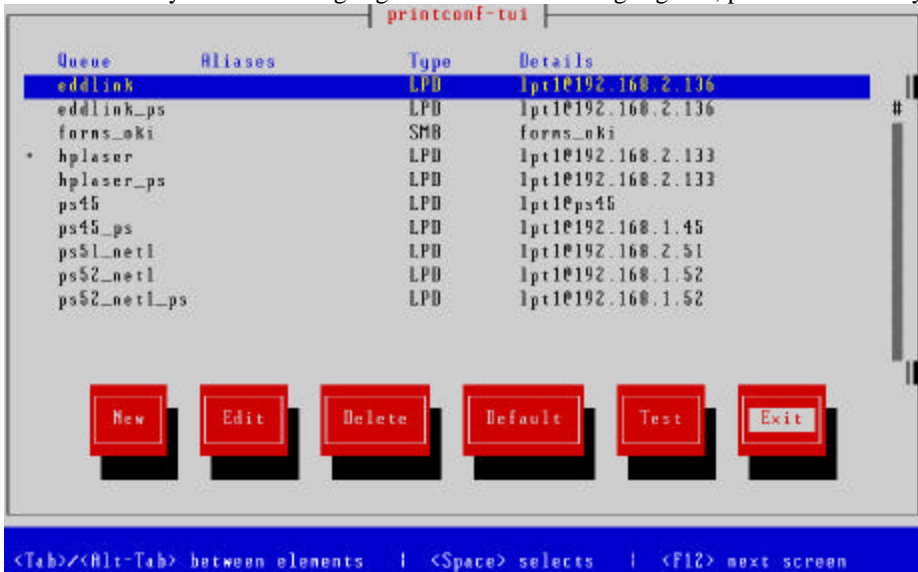
14. Find the model of printer you are setting up and press the space bar on it. If your printer is not listed, find the printer with the model number closest to it. This will display a list of drivers for this printer.



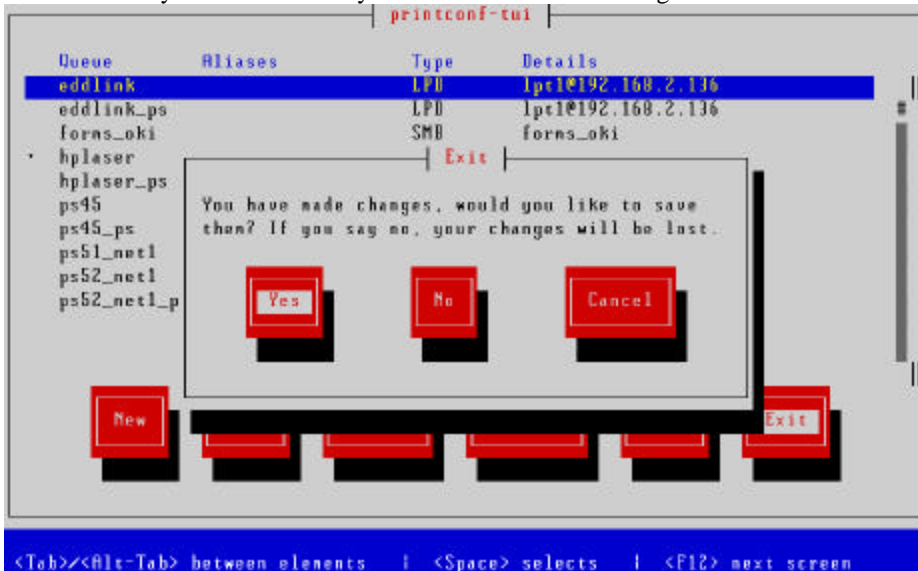
15. Press enter to approve the settings.



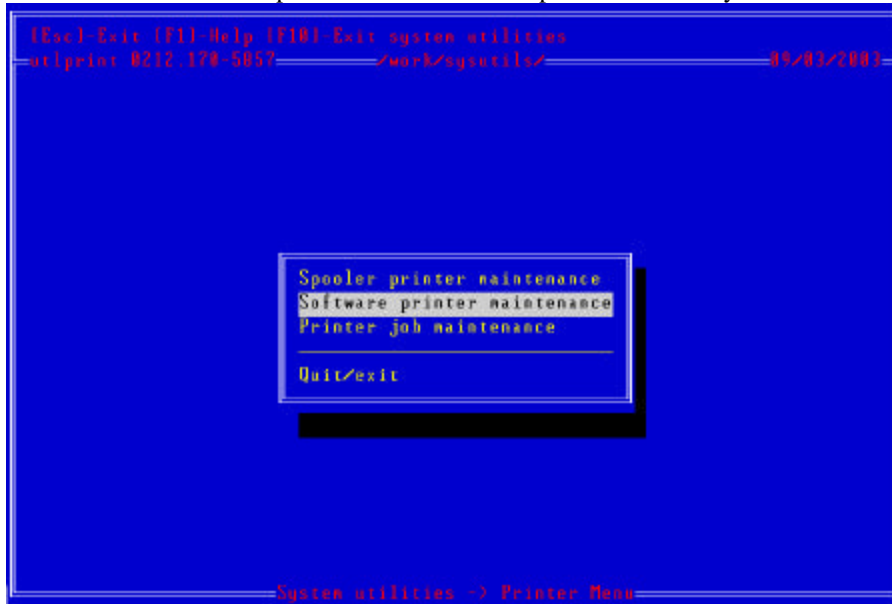
16. Press the tab key until exit is highlighted. When exit is highlighted, press the enter key.



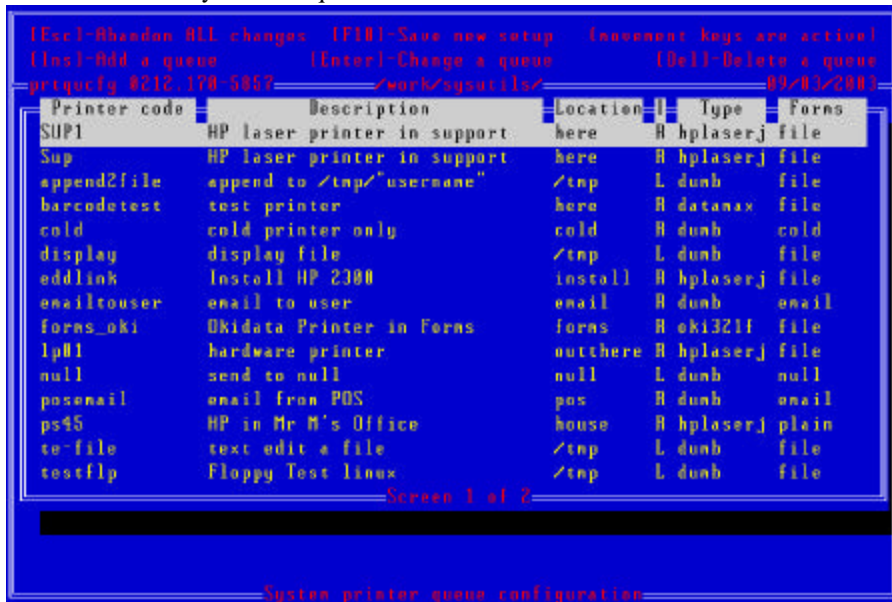
17. Press enter on yes when asked if you would like to save changes.



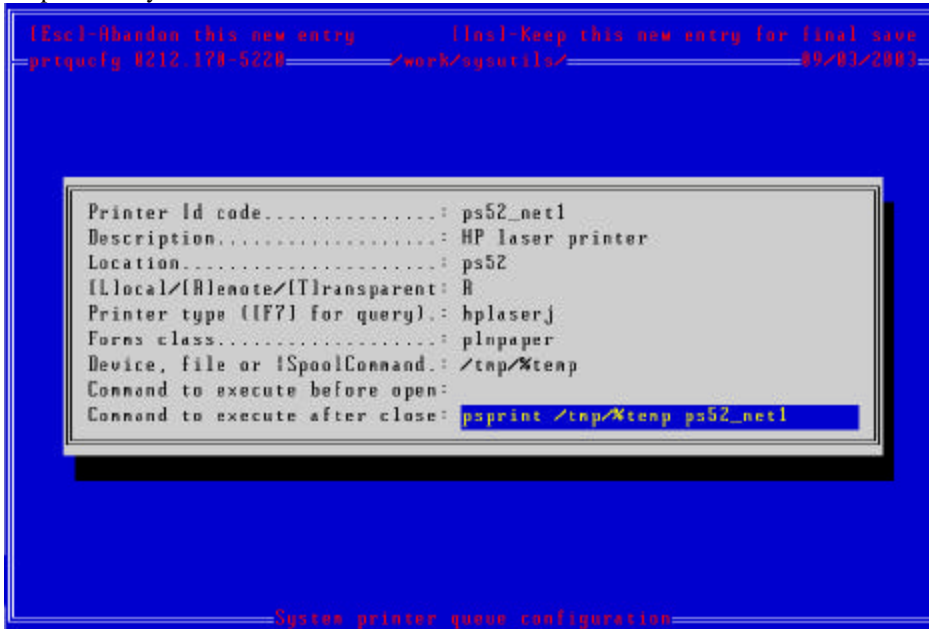
18. Arrow down to Software printer maintenance and press the enter key.



19. Press the insert key to add a queue.



- Next to Printer Id code, enter the name of the printer. The name will most likely be the name of the print server. Enter a description that will help you identify this printer. Next to [L]ocal/[R]emote/[T]ransparent type R. type in hplaserj next to Printer type. Next to Device, file or [S]pool Command type in /tmp/%temp. Leave Command to execute before open blank. Next to Command to execute after close enter psprint /tmp/%temp *spoolname* where *spoolname* is the name of the spooler you setup in spooler printer maintenance. Press the insert key to keep this entry for final save.



- Press the F10 key to save the new setup. At this point your psprinter is setup. Set the printer up appropriately in form and printer configuration.

