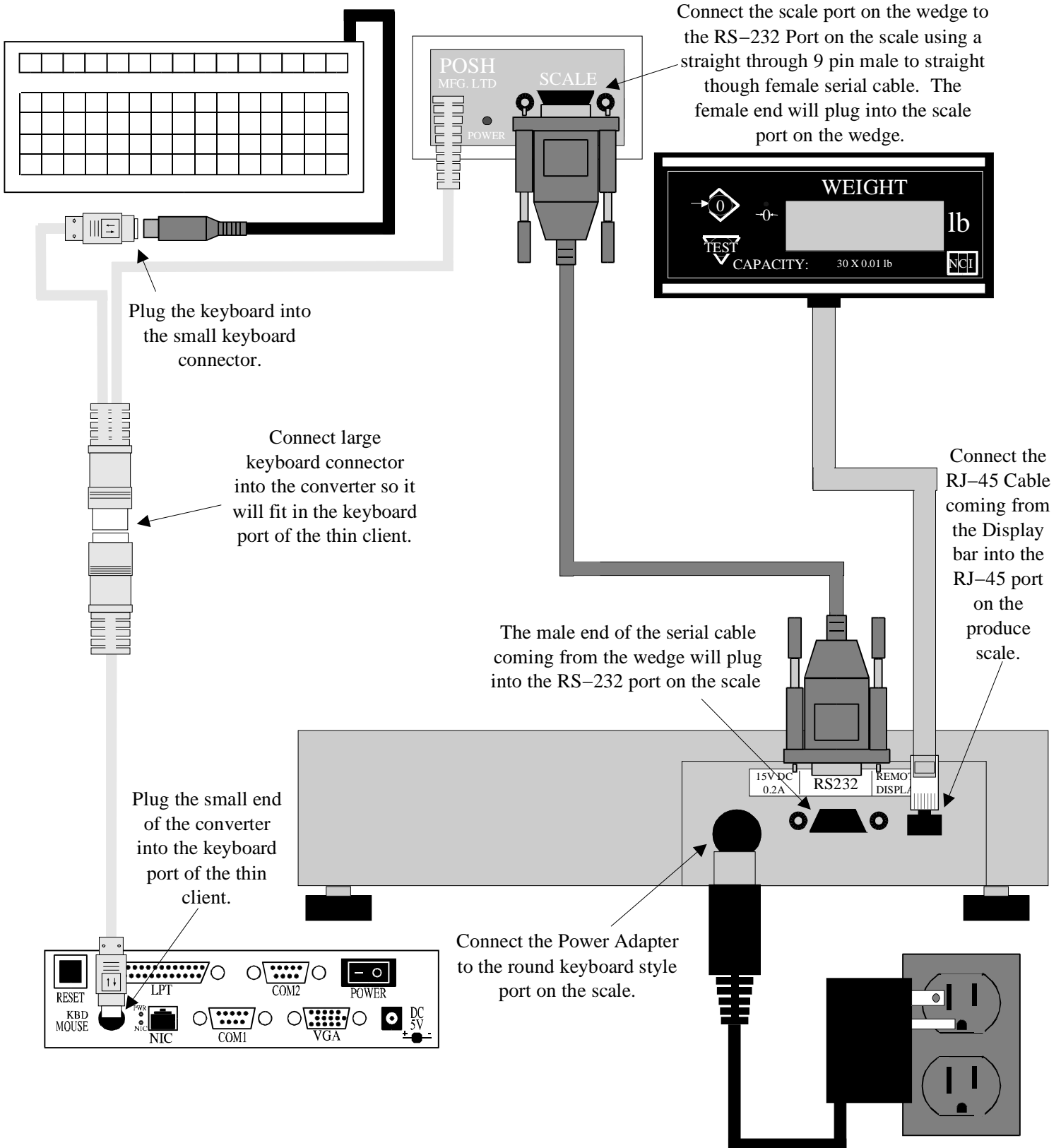


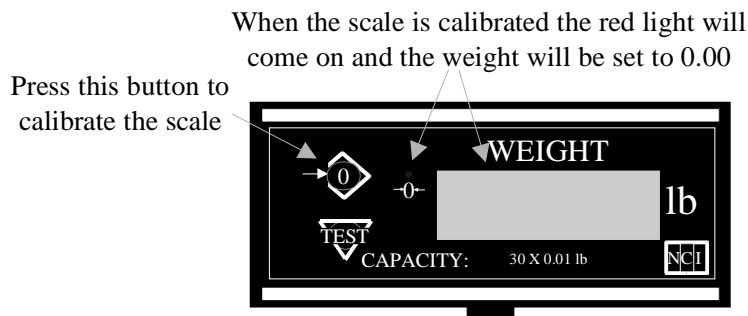
Connecting the Model 6710 Produce Scale to a Thin Client

Warning: Turn the power off to the terminal before connecting the scale.



Connecting the Model 6710 Produce Scale to a Thin Client

1. Connect the scale to a terminal as shown on page 1. Make sure the terminal is turned off when connecting the scale to it.
2. Turn the terminal on and allow it to come up to login.
3. Login as root.
4. Calibrate the scale. To do this, make sure there is nothing on the scale, then press the enter 0 button on the display bar. This should set the readout to 0.00 and turn on the red 0 light.



5. From the # prompt type clist and press the enter key.
 6. Enter your password when prompted.
 7. Choose your play dataset.
 8. Choose point of sale from the menu.
 9. Choose order entry from the menu.
 10. Enter your password when prompted and press enter.
 11. Press F5 to do a cash sale.
 12. Press F7 and choose an item. When you press enter on an item it should take you back to point of sale into the quantity field.
 13. Place something on the scale and press the F12 key. This should put the weight in the quantity field and not advance to the next line or field. The weight should appear exactly as it appears on the display. If this is what occurred proceed to the next step. If this did not occur, return to step 1 and make sure all of your connections are correct.
 14. Press escape and answer yes when asked if you want to abandon this new order.
 15. Press escape until you return to the # prompt.
 16. Type in exit and press enter.
- At this point the scale is set up and ready for use. To use your scale, simply press the F12 key in the quantity field at point of sale.