

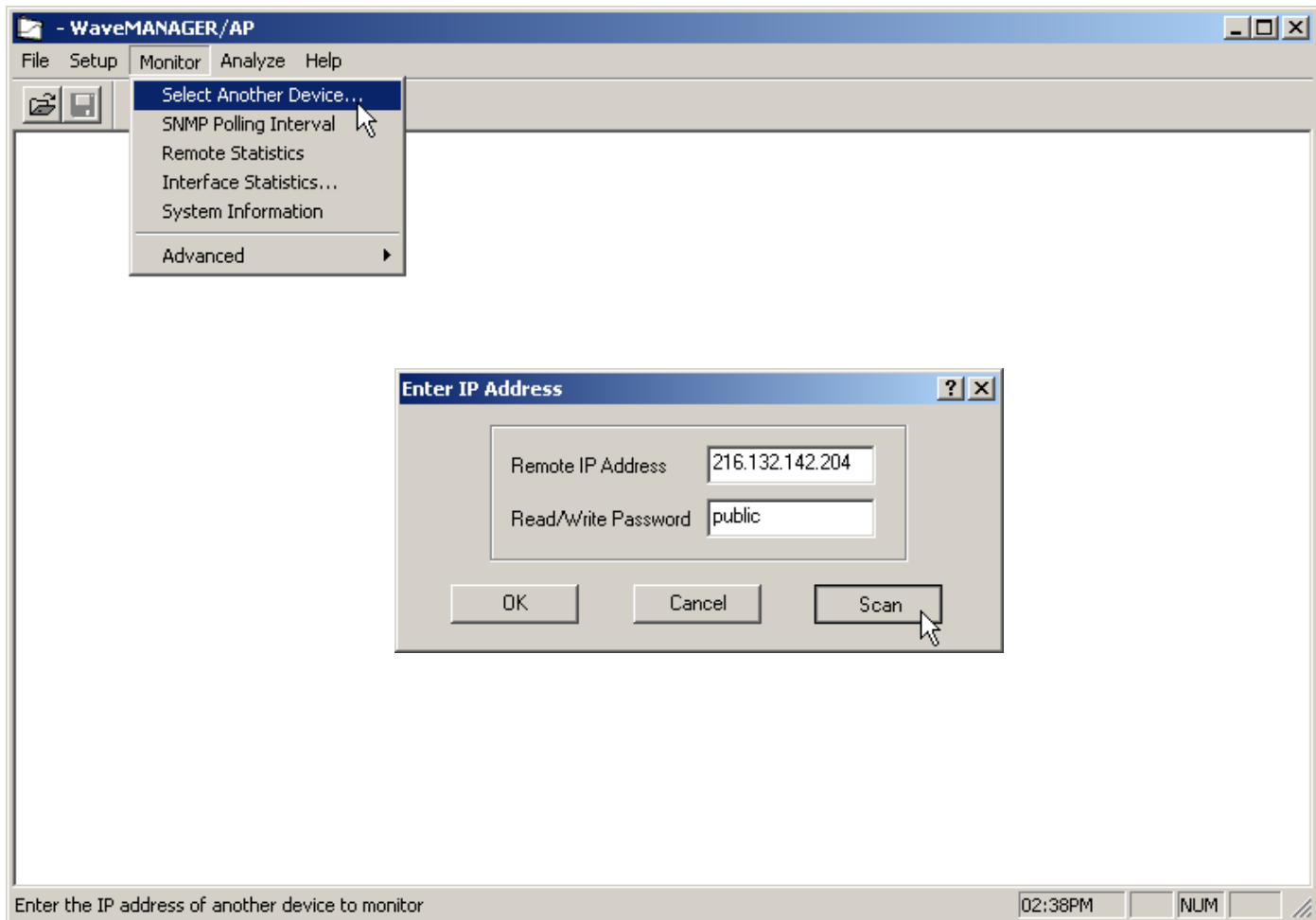
Installing Wavelan Cards on Laptops

Setting up the Wavelan Unit:

When you first receive the unit, remove the black box and one Wavelan Card. Plug in the power to the unit, plug the card into one of the slots on the back of the unit, and then plug the ethernet cable in. You should have the light blinking green. If they are red that means there is something wrong.

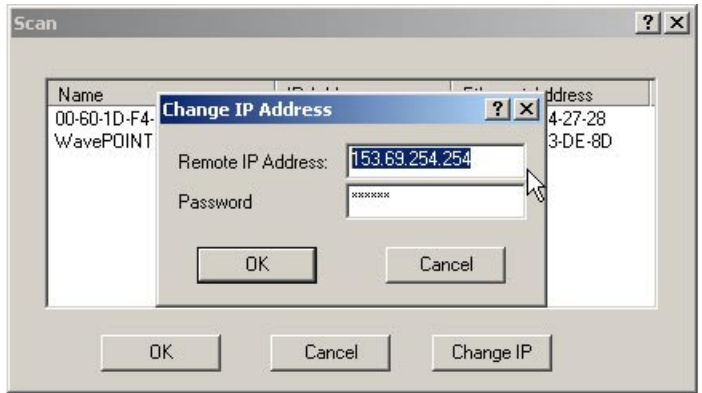
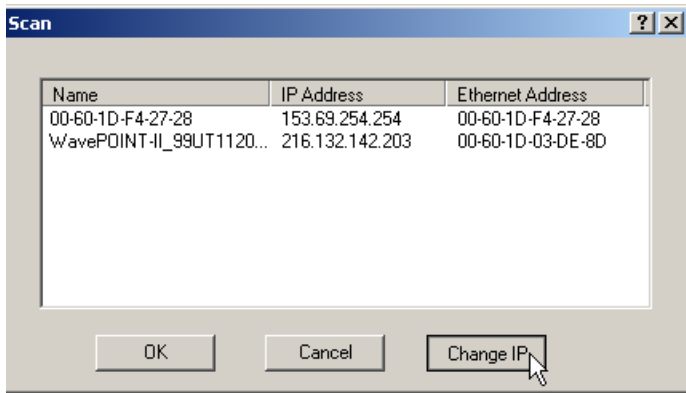
Go to a Windows PC that is connected to the same network as the wavelan. Install the Wavemanager/AP software off of the diskettes included with the wavelan equipment. Put the disk into the floppy drive, go to Start→Run→Browse and go to the floppy and run Setup.exe. Now go to Start→Programs→Wavelan→WaveMANAGER AP. Your screen should look something like the picture below.

The first place you will go is to Monitor→Select Another Device... Then locate the scan button and click on it with the mouse.

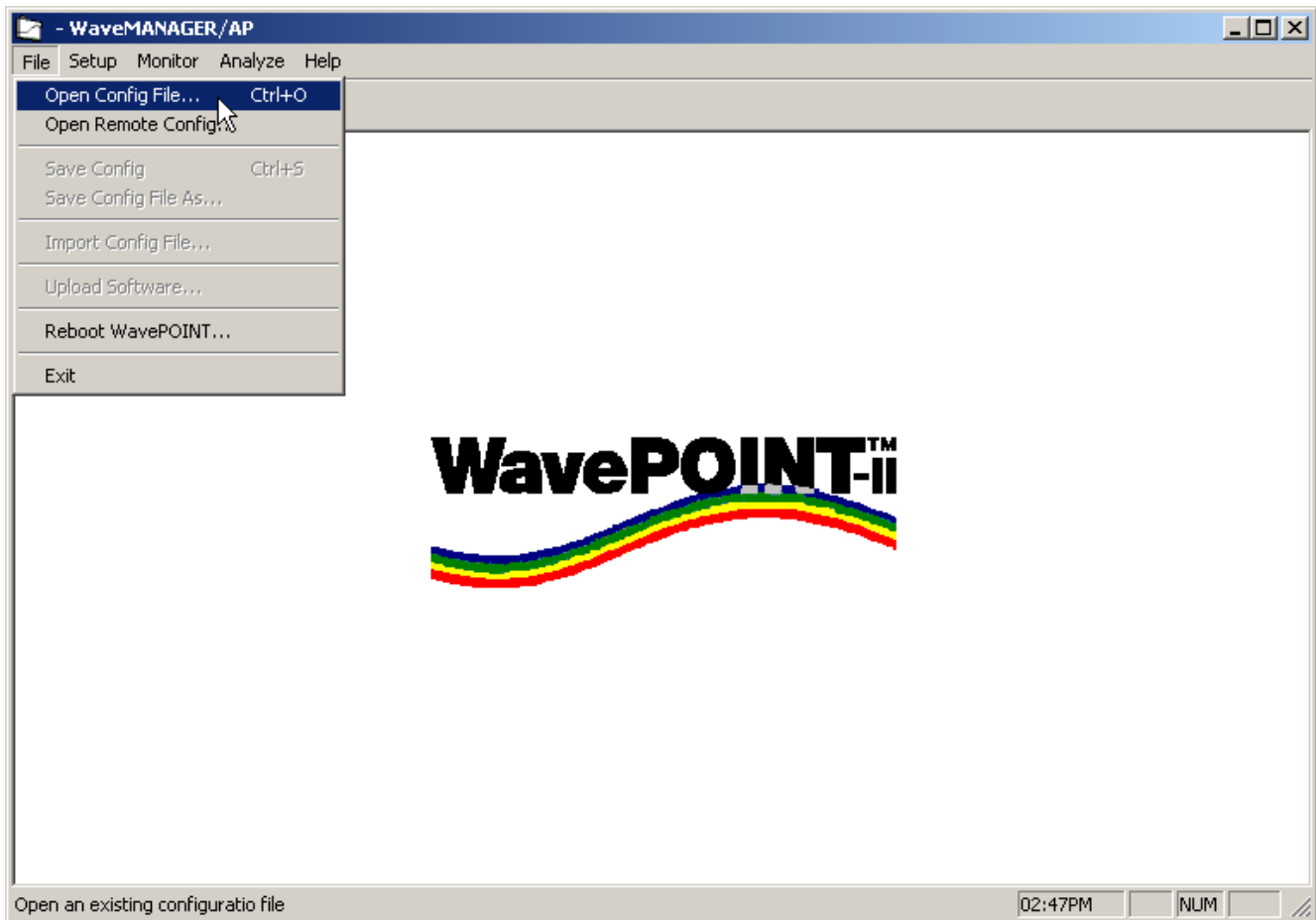


It will now go out and search for all of the wavelan units that are attached to the local network. When it finishes, pick the wavelan you want to use and click on the Change IP button. Type in the IP Address that you want to

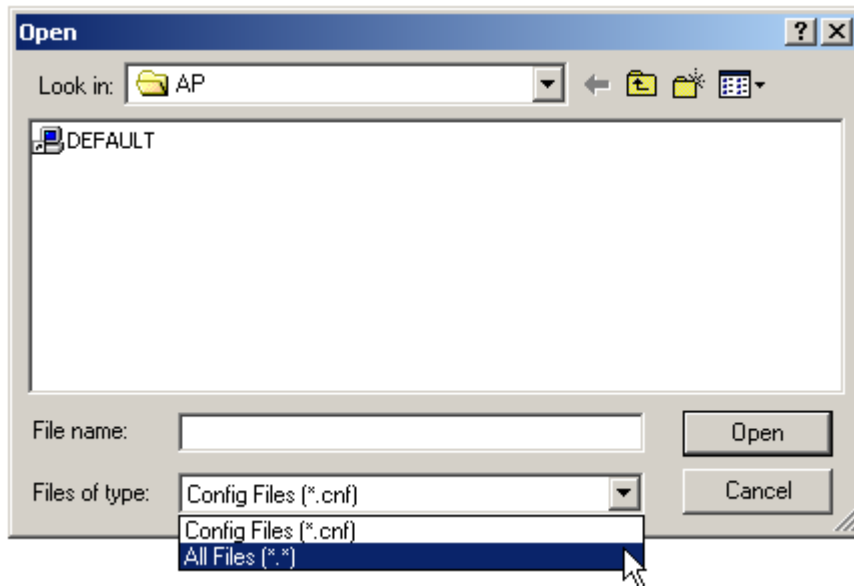
use for the wavelan, and answer OK. Then make sure the correct IP address is highlighted and answer to the rest of the questions until you are back out and it says "Device Located."



Now go over to File→Open Config File...

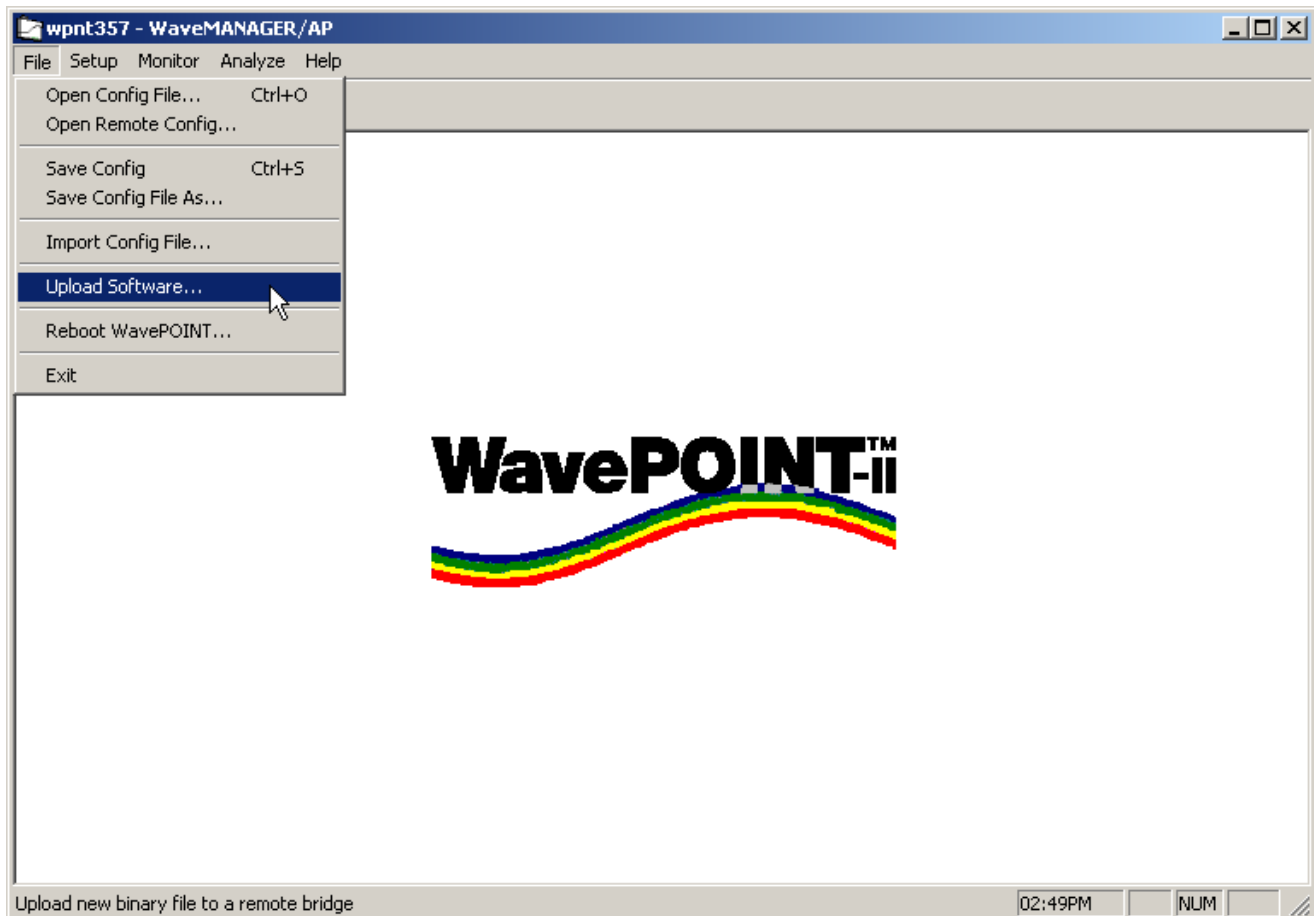


When it opens up the only file you will see is DEFAULT. Go down to the bottom and click on the down arrow next to Config Files (*.cnf) and highlight All Files.

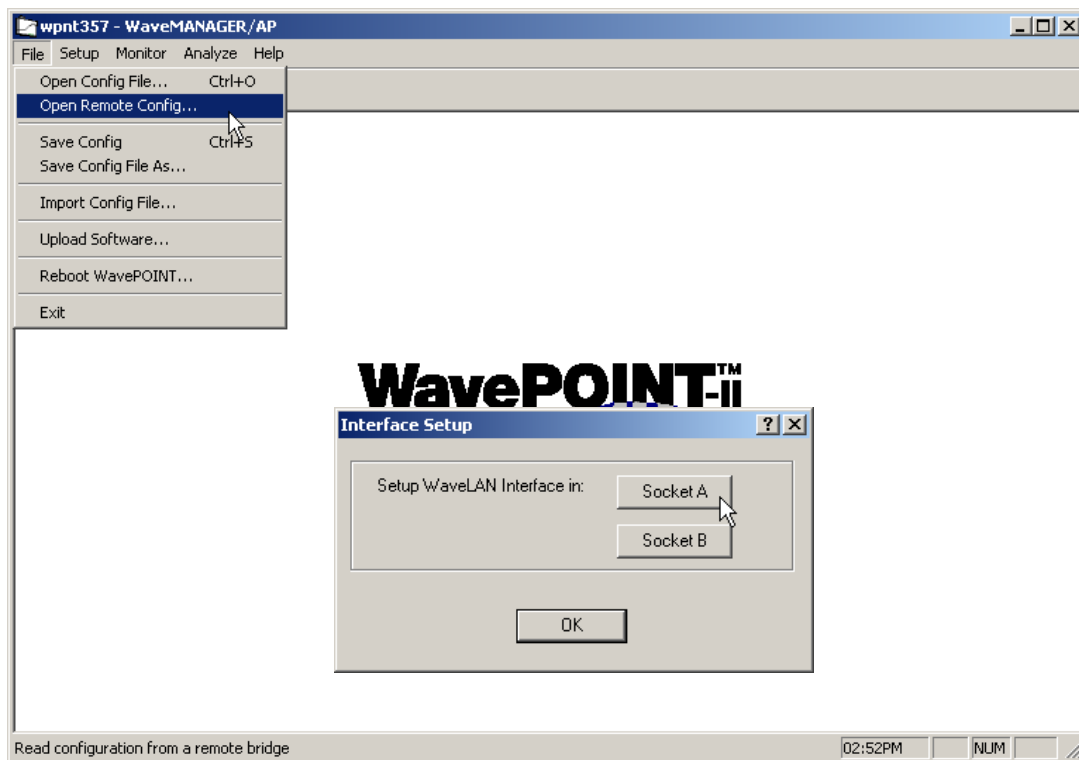


After you have set it to look at All Files find the file "wpnt357" and highlight it and click the Open button.

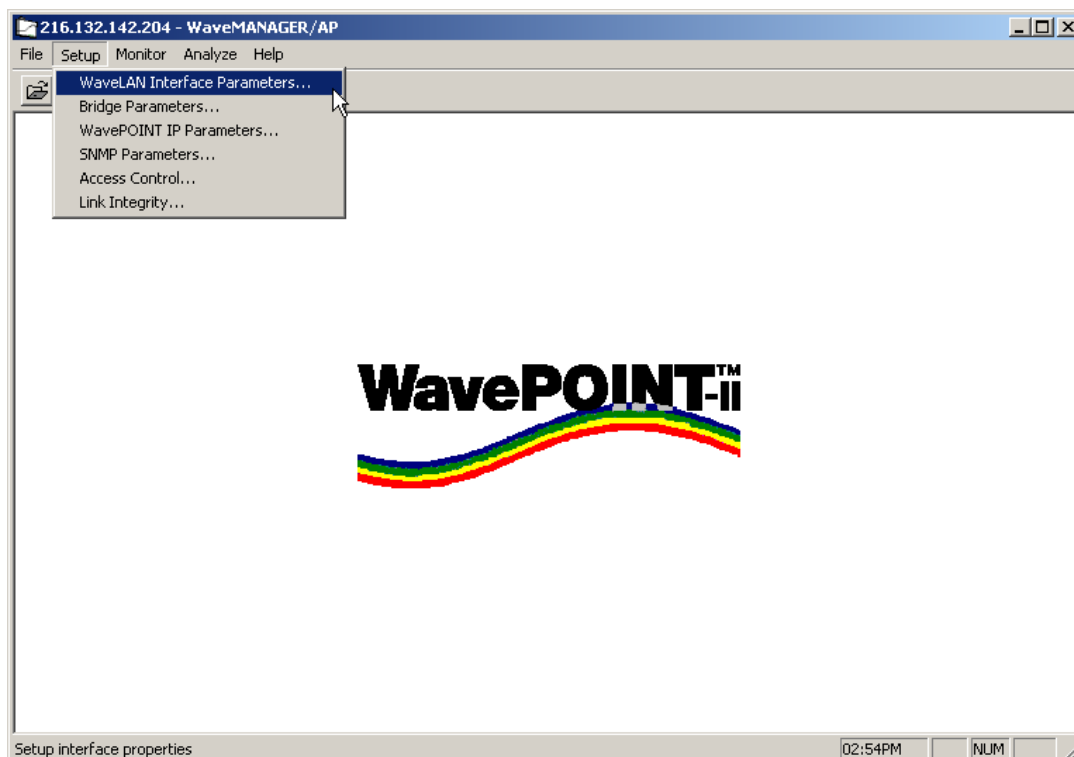
Now you have to reload the actual wavelan unit with this file. In order to do this you must go up to File→Upload Software.... When the process starts answer yes to all of the questions, and the the unit will automatically reboot itself.



After the unit has rebooted, go back up to File→Open Remote Config. When you go in there, you must pick out your wavelan unit. Keep in mind the IP Address changed when we uploaded the software. Highlight the Wavelan unit and change the IP address back to what it was previously, and click OK until you are back out.

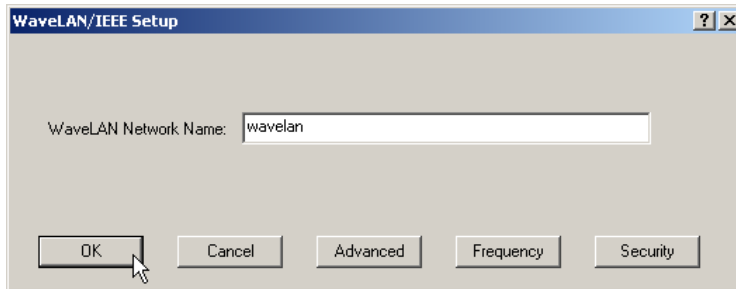


Now go up to Setup→Wavelan Interface Parameters... When you get in there it will bring up the option for Socket A or Socket B. Choose whichever socket the card is in on the wavelan access point.



Now it will bring up a screen that asks for the network name. You must name the network that the wavelan run on. The default entry is "WaveLAN Network." You will want to change that to "wavelan."

Now you must go to File→Save Config... Answer OK to all of the questions and let the access point reboot

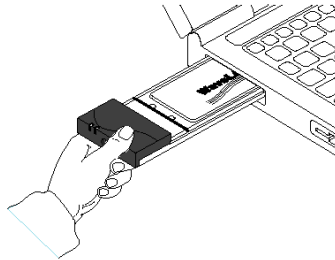


itself. You should now have the access point configured.

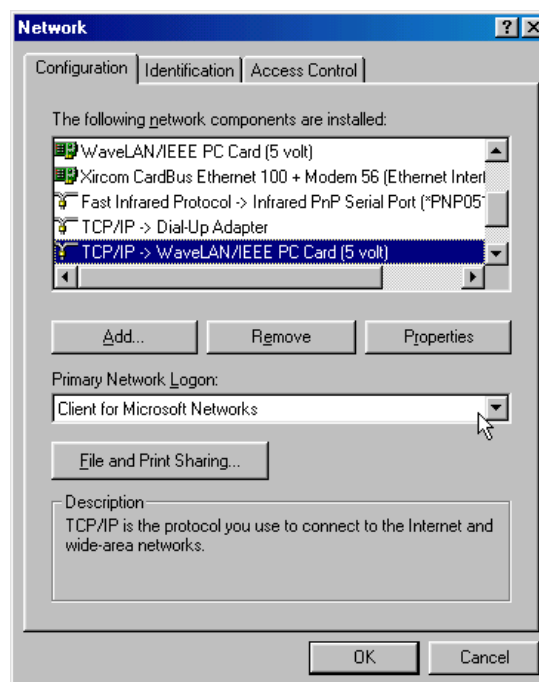
Configuring Wavelan on the Laptop:

When you receive the Wavelan cards, in the back of the manual is an installation CD. Get it and put it into the CDROM drive of the laptop, and put the card into the PCMCIA card slot on the laptop. When you put the card in it will start an installation program. Direct it to the CDROM for the files. If it asks for the WINDOW 98 CD direct it to C:\Win98. During the installation it will ask for a network name and you will enter "wavelan." When it finishes it will require you to reboot you machine.

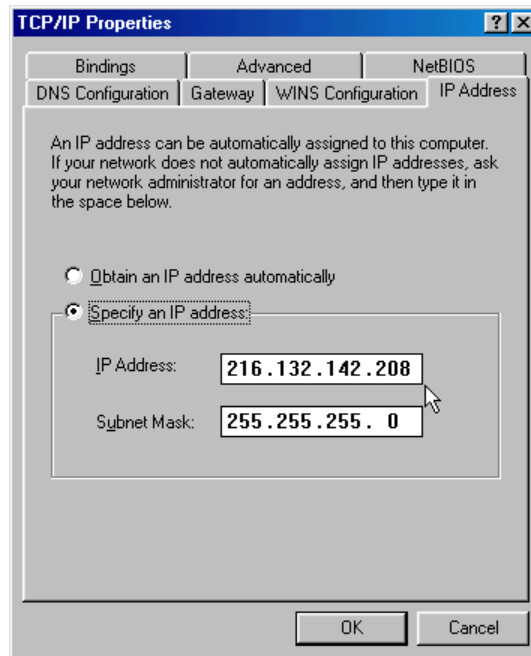
When the machine comes back up you should have a little pcmcia card showing in the system tray on the start bar. Now go to Start→Settings→Control Panel. Inside the Control Panel, find the Network icon and click on it.



This will bring up a menu that looks like the one below. Highlight on TCP/IP -> WaveLAN IEEE PC Card 5 Volt and click the Properties button.



When you are in the card properties go to IP Address tab and enter in the IP Address that you want to assign the laptop. You can enter in the Gateway and DNS if you know what they are. When that is entered click OK and then it will tell you to restart your computer.



When the computer comes back up look at the lights on the card. The left light should be solid green and the other light should be blinking. If they are go to Start→Run→ and type "ping" and an IP Address on the network and see if you get a reply. That should have everything working. If you have trouble consult the instructional books that came with the equipment.