


## Setting up the Linksys WAP11 ver 2.2 as a wireless bridge

### *Notes:*

Before you begin you need to gather a few things. You will need a windows based PC with a network card on a 192.168.1.\* network and an internet browser, a null ethernet cable, and a powered electrical outlet to plug the access point into. You will also need to write down the MAC address of each of the access points that you will be bridging. These can be found on the bottom of the access points on a sticker beside the words "MAC Address:"

- 1.) Plug the AC adapter into the wall socket.
- 2.) Plug the wire from the AC adapter into the back of the access point.
- 3.) Plug one end of the null ethernet cable into the access point, and the other into the ethernet card on the back of the PC.
- 4.) Open a browser window.
- 5.) In the address bar, type **192.168.1.251** and press **[Enter]**
- 6.) For password, type **admin** and press **[Enter]** (you don't need to enter a username)



Enter Network Password

Please type your user name and password.

Site: 192.168.1.251

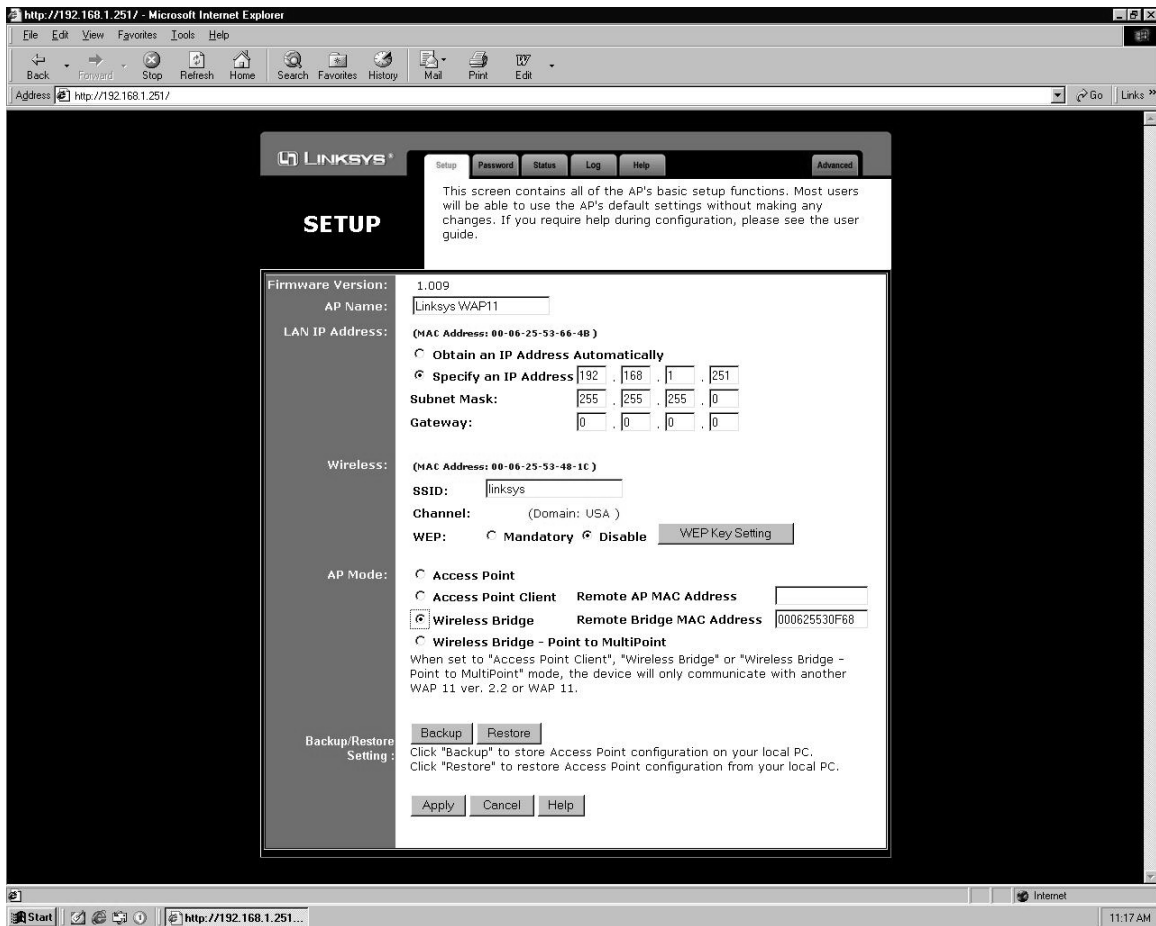
Realm: Linksys WAP11

User Name:

Password:

Save this password in your password list

OK Cancel



- 7.) Look near the upper left corner beside Firmware version, if you do not see 1.009 or greater, this access point will not bridge without a firmware update.
- 8.) You may now change the IP address if needed. Also note that the IP addresses on these units are for management purposes only. This means you can set the IP address to a different network from the rest of your system, but it will make trouble-shooting more difficult if problems arise.
- 9.) Click to put the dot beside the first "Wireless Bridge" option.
- 10.) In the "Remote Bridge MAC Address" box, type in the MAC address of the access point you are pairing this one with. (This is found on the bottom of the access point on a sticker)
- 11.) When you are done with this, click the Apply button on the bottom of the screen.
- 12.) The access point is now configured for bridging.