

PPTP Setup ON Snapgear

1. To setup a PPTP VPN on the Snapgear Router, you should have a static IP Address. This will allow Remote users to connect to the same ip address for the purpose of the VPN.
2. Open the Snapgear Router by putting the ip address into a web browser (192.168.1.254).



3. On the left hand side, click on PPTP Server
4. If given a login prompt, login with root, and root password. Choose Enable PPTP Server, put a range of IPS for the clients to use, select MSCHAPv2 and Encryption, and select Local. Hit Continue.



NOTE: Make sure the range you specify is not in use by DHCP or any device.

PPTP Server Setup

The CyberGuard PPTP VPN server allows remote users (who are connected to the Internet) to connect to your local area network (LAN). The server is compatible with both Windows and Linux PPTP clients.

Enable PPTP Server:

IP Addresses for the Tunnel End Points

Enter the IP addresses for the tunnel end-points. You will need to specify a free IP address from your local network which VPN clients will use when connecting to the CyberGuard unit. Please ensure the IP addresses listed here are not in the range the DHCP server can assign. (ranges accepted - eg. 192.168.160.250-254).

IP Address(es) to Assign VPN Clients:

Authentication Scheme

Select the authentication scheme used to validate connecting clients.

None
 PAP (basic authentication)
 CHAP (strong authentication)
 MSCHAPv2 (stronger authentication)
 MSCHAPv2 and Encryption (recommended - stronger authentication plus data privacy)

Authentication Database

Select the authentication database used to validate connecting clients.

Local
 RADIUS
 TACACS+

5. Specify Username and Password. Leave the Domain field blank, then click Add.

6. Repeat step 5 for as many users as you wish to create for home use. Make sure you have enough IPS allotted for each user, or not all of them will be able to login at the same time.

Add New Account

Username:

Windows Domain:

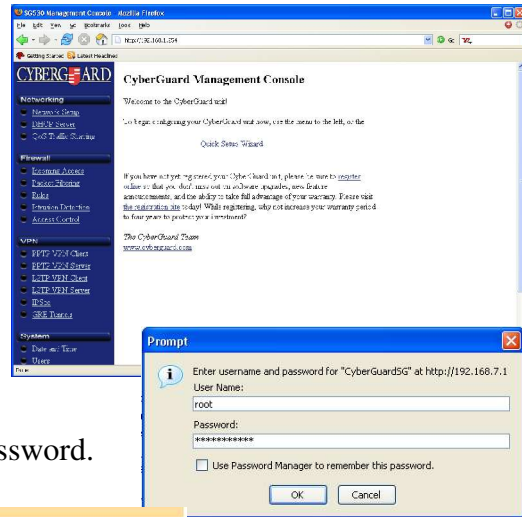
Password:

Confirm Password:

NOTE: Most Windows clients expect you to specify a domain name in upper case.

Changing/Deleting Users and Passwords

1. Open the Snapgear Router by putting the ip address into a web browser (192.168.1.254).
2. On the left hand side, click on PPTP Server



3. If given a login prompt, login with root, and root password. Verify that Enable PPTP Server, MSCHAPv2 and Encryption, and Local are selected. Hit Continue.

PPTP Server Setup

The CyberGuard PPTP VPN server allows remote users (who are connected to the Internet) to connect to your local area network (LAN). The server is compatible with both Windows and Linux PPTP clients.

Enable PPTP Server:

IP Addresses for the Tunnel End Points

Enter the IP addresses for the tunnel end-points. You will need to specify a free IP address from your local network which VPN clients will use when connecting to the CyberGuard unit. Please ensure the IP addresses listed here are not in the range the DHCP server can assign. (ranges accepted - eg. 192.168.160.230-254).

IP Address(es) to Assign VPN Clients:

Authentication Scheme

Select the authentication scheme used to validate connecting clients.

None
 PAP (basic authentication)
 CHAP (strong authentication)
 MSCHAPv2 (stronger authentication)
 MSCHAPv2 and Encryption (recommended - stronger authentication plus data privacy)

Authentication Database

Select the authentication database used to validate connecting clients.

Local
 RADIUS
 TACACS+

4. Click the dot next to select user, then change the password, or press delete account to delete the user. Press submit to submit your changes.

PPTP Accounts

Below is a list of existing VPN accounts on the CyberGuard unit.

Username	Domain	Server Name	Select
wolf	N/A	PPTP	<input checked="" type="radio"/>

Delete or Change Password for the Selected Account

You may delete or modify accounts below. Make sure you have the account you wish to alter selected above.

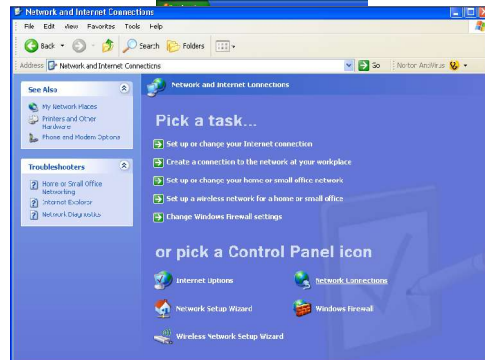
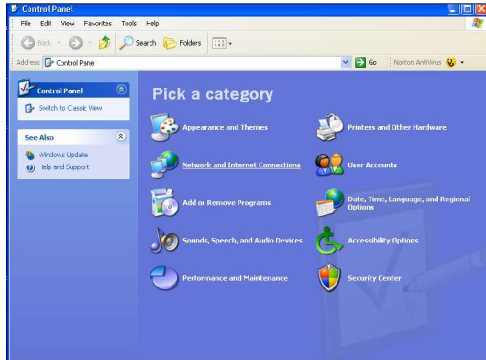
Delete Account:

New Password:

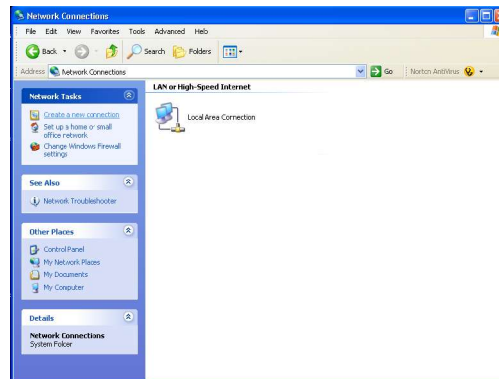
Confirm Password:

Setting Up PPTP in Windows XP

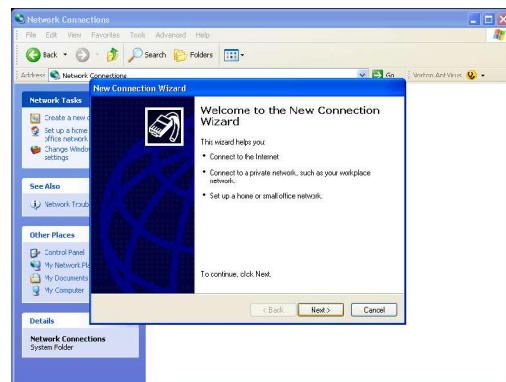
1. Open the Control Panel (may be on desktop, or go to Start -> Control Panel, or start -> Settings -> Control Panel)
2. Select Network and Internet connections, then Network Connections (or just Network Connections)



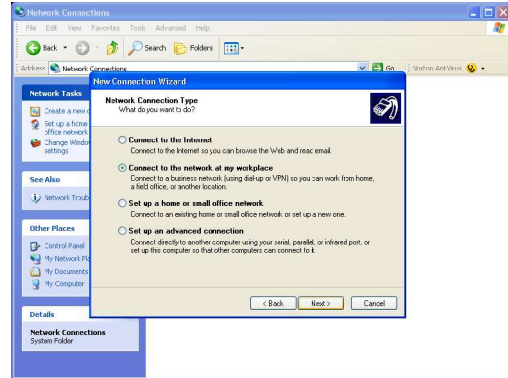
3. Select Create a New Connection.



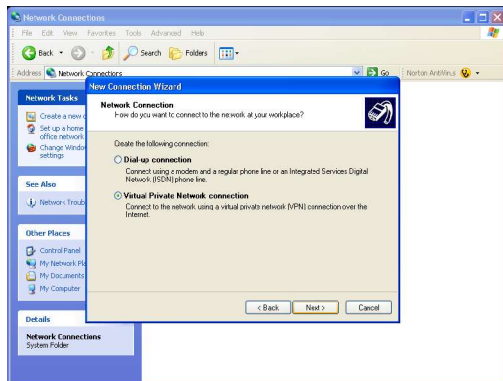
4. Click Next to begin.



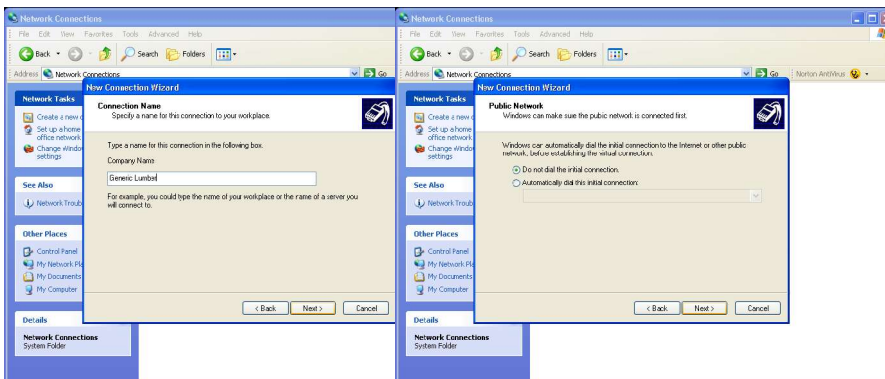
5. Select Connect to the Network at my Workplace, and Click Next.



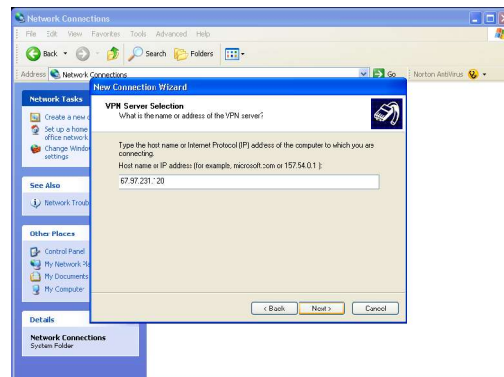
6. Select Virtual Private Network Connection, and click Next.



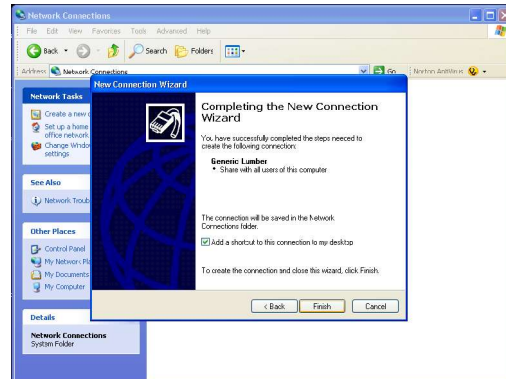
7. Put in the name of your company (this will serve as a connection name) and click next.



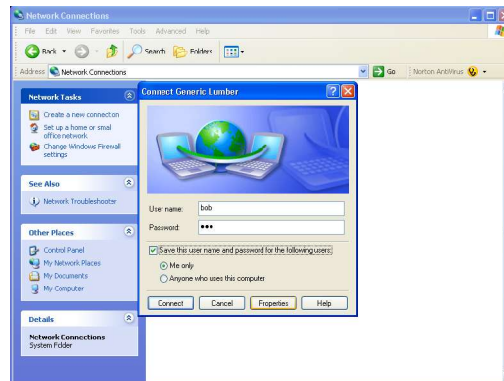
8. Type in the Static IP Address of the Snaggar's Internet interface.



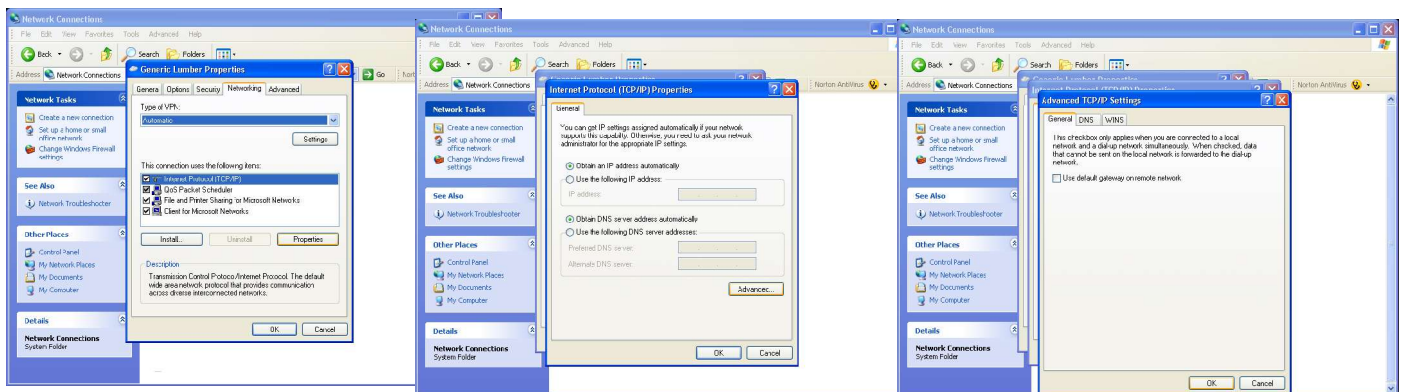
9. Put a check in Add a shortcut to the desktop if you want one, and click Finish.



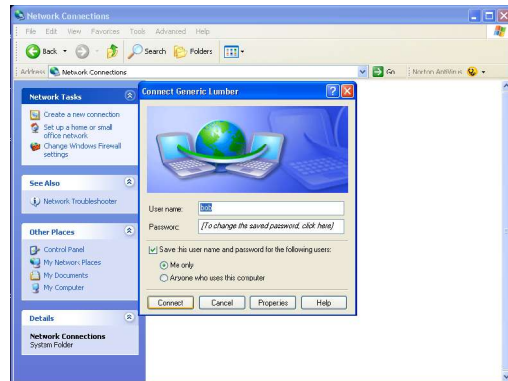
10. Put in the User Name and Password you setup in the snapgear.



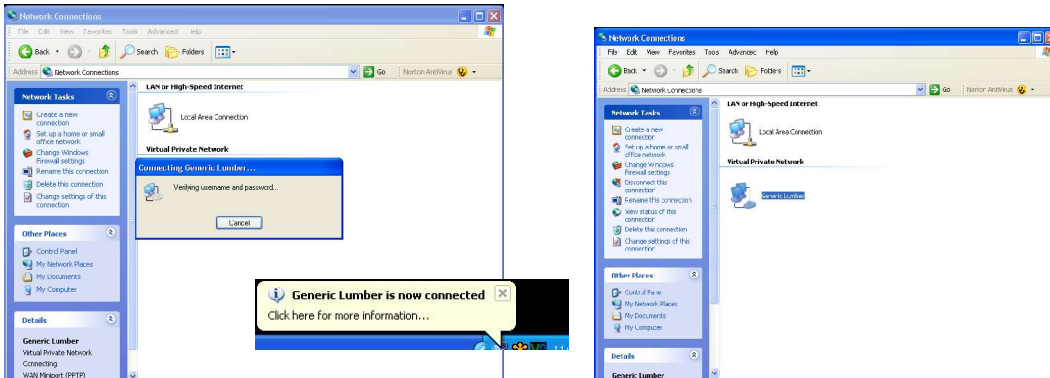
11. Click Properties, then click the Networking Tab and Properties again. Click Advanced and remove the check to use default gateway on remote network. Hit OK until back to the username screen.



12. Click the Save button if you want to save the user name and password, and click Connect.



13. This will log you into the VPN and give you an IP on the network.



14. You can now use Adwin to get to the local IP of the Advantage Sever (usually 192.168.1.1).

