

Configuring Snapgear Router as a Firewall

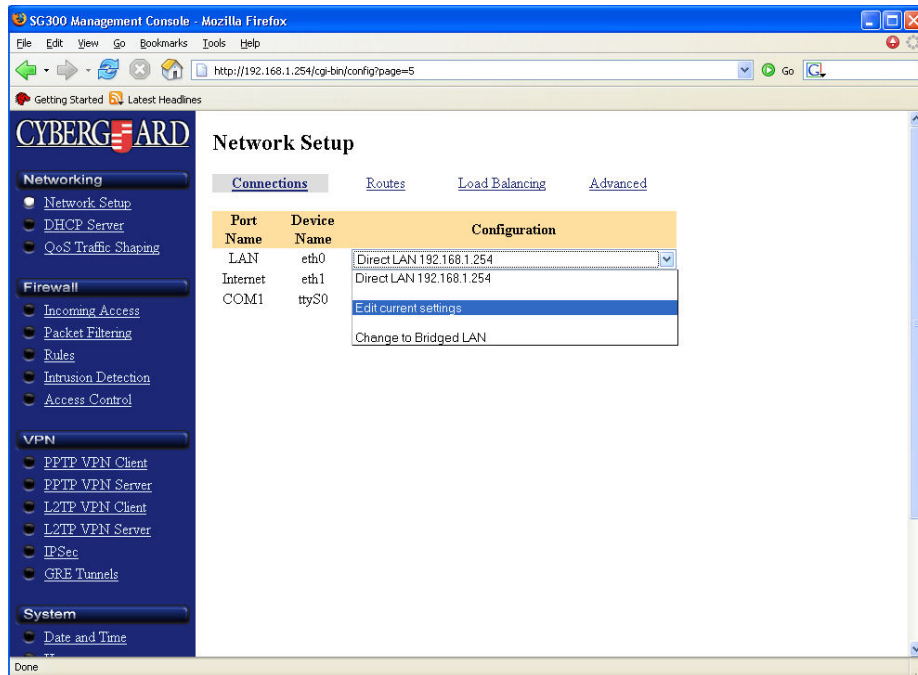
1. By default the snapgear has an IP address of 192.168.0.1
2. Configure your pc or server to an address on this network, and open the IP in a web browser
3. Click on Network Setup on the left.



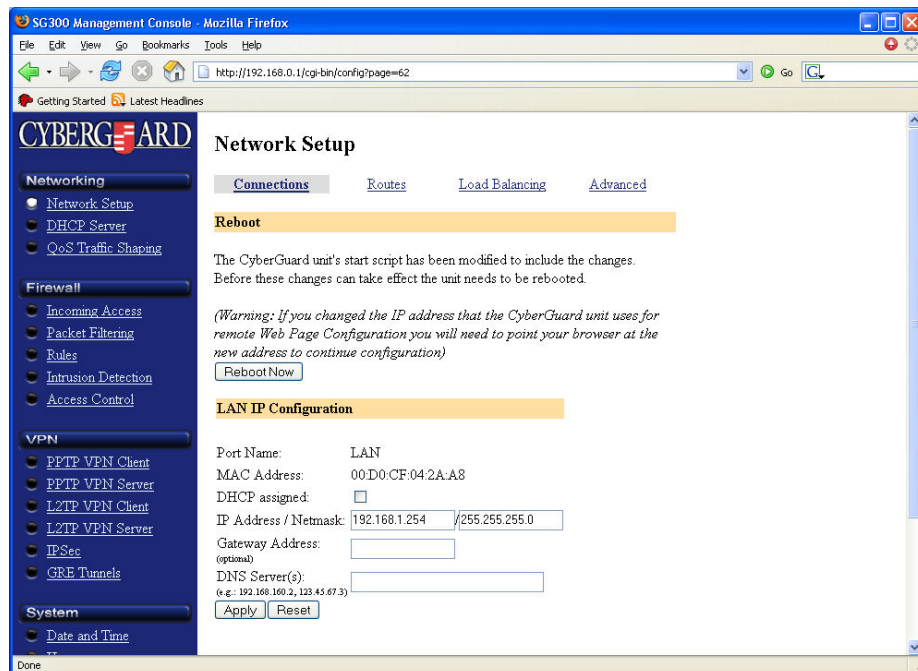
4. You should now be prompted for a username and password. The default username is root, and the password is default.
5. After logging in, you will be prompted to change the password. Do so now. Configure the password to the standard Root password for a linux server.



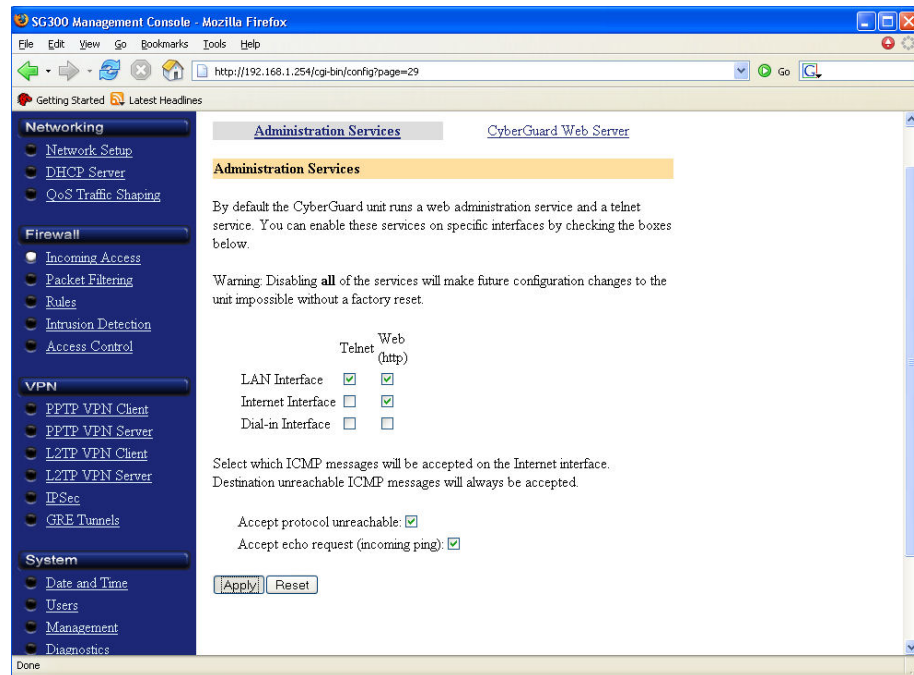
6. Click Apply. This will take you to your interface configuration screen.
7. On LAN, click the drop down menu and choose Edit Current Settings. Since you just changed the password, you will be prompted for the username and password again..



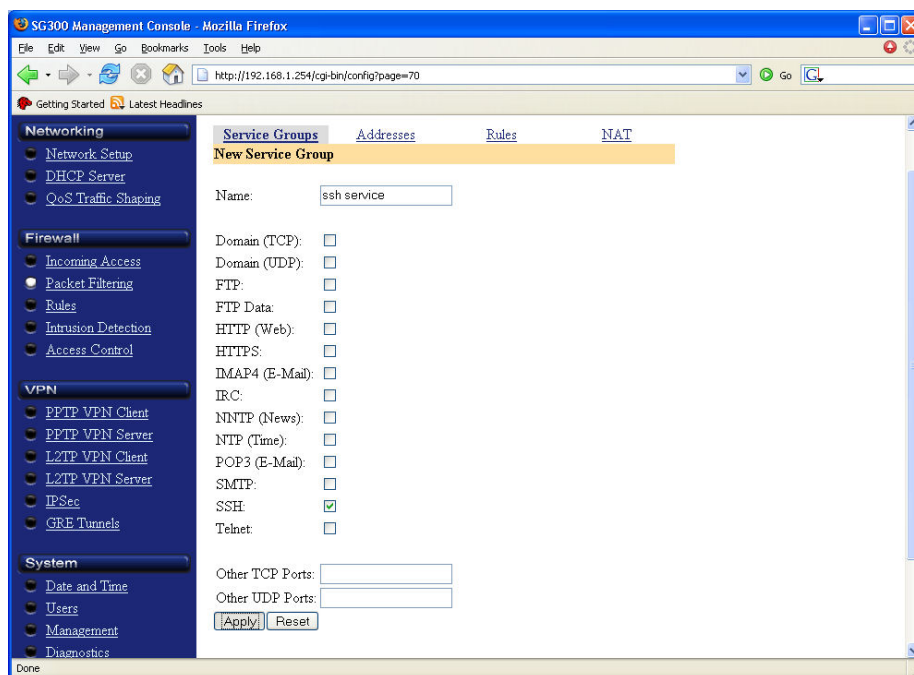
8. Type in the LAN IP and subnet for the router. This will usually be 192.168.1.254/255.255.255.0. Then click Apply, and Reboot Now.



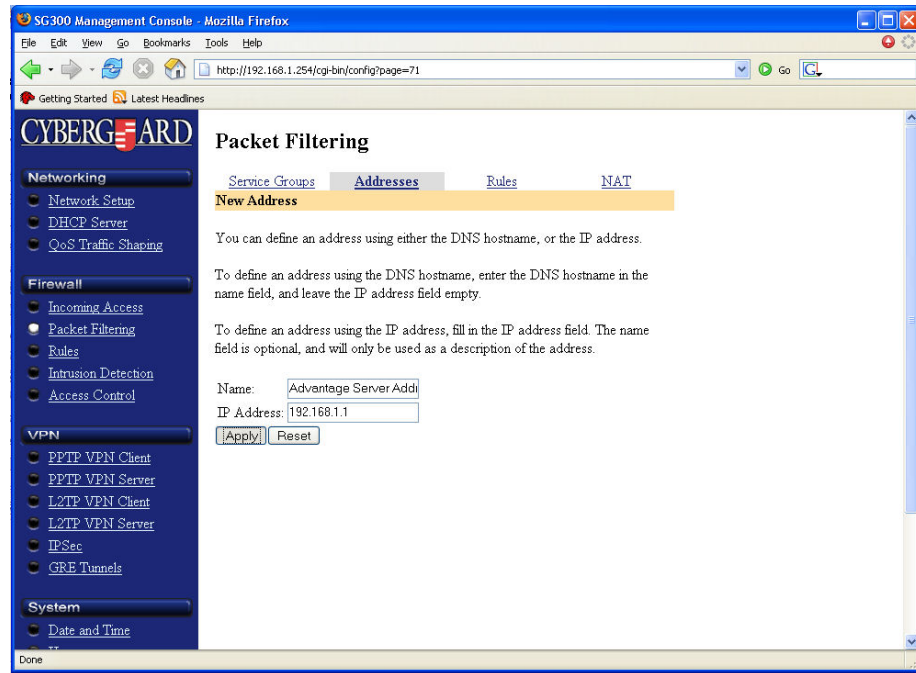
9. Input the new IP address in your web browser, then click on Incoming Access.
10. You will be asked to login. This is root, and the password you setup earlier.
11. Make sure that both columns (telnet and web) are checked for the LAN Interface, neither are checked for the Dial-in Interface, and that Web is checked for the WAN Interface. Put a check in Accept Echo Requests, then click Apply.



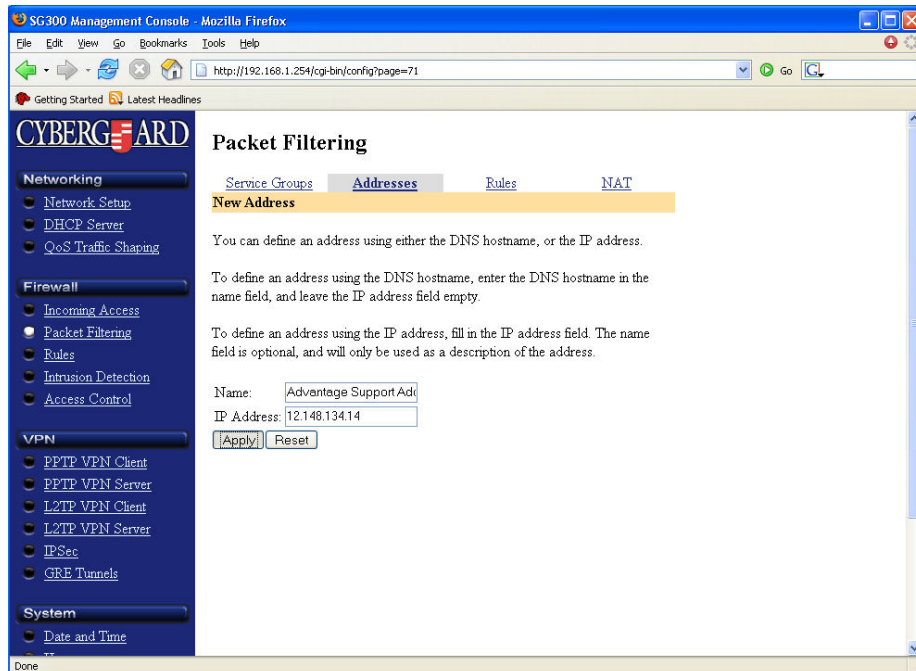
12. Click on Packet Filtering on the left. Then click on Service Groups at the top.
13. Create a New service called SSH Service. Choose the Check box next to SSH and click Apply.



14. Click on Addresses at the top, and add a New Address. Call it Advantage Server Address, and put in the IP of the Advantage Server (usually 192.168.1.1), then click Apply.

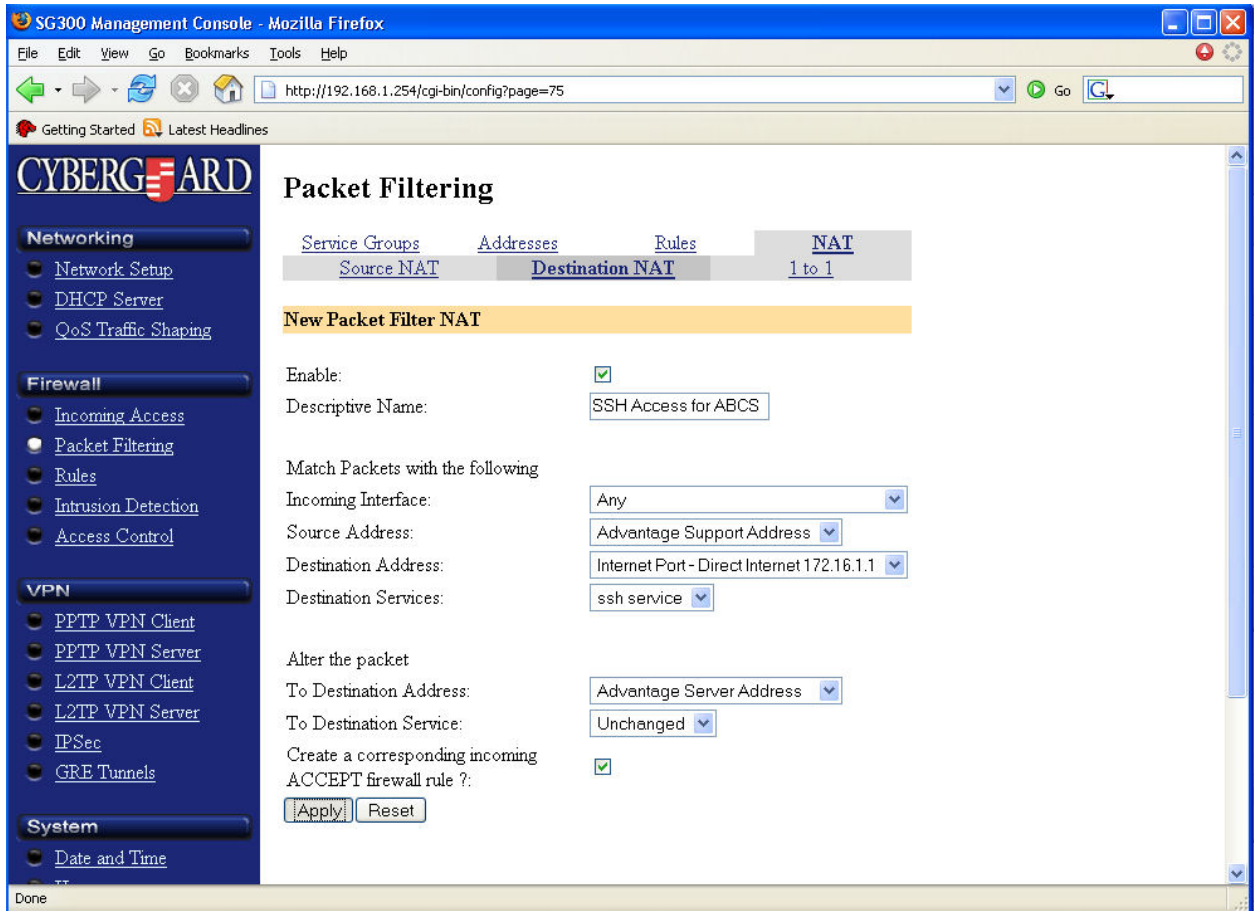


15. Click New name it Advantage Support Address. This will be our Internet IP Address, which is 12.148.134.14. Click Apply to save.



16. Click on NAT at the top, then Destination NAT

17. Set the Name to SSH Access for ABCS. The Incoming Interface is Any, Source Address you should choose Advantage Support Address, Destination Address should be the Internet Port, Destination Service should be SSH Service. After the packet: To Destination Address should be Advantage Server Address, and To Destination Service should be unchanged. Ensure there is a check for Create a corresponding incoming ACCEPT firewall rule, and click Apply to save.



18. Label the LAN and WAN IP Addresses to the Snapgear device and box.